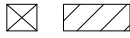


SKID SUPPORT STRUCTURE* BONDED TO SPA



*SKIDS SUPPLIED BY NESPA

LIGHT NICHE



SPA BRIGHT, 120 V, 100 WATT, 50' CORD, U.L. APPROVED

SKIMMER



HAYWARD SP-1084FVE SURFACE SKIMMER W/ EQUALIZER, NSF APPROVED

EQUALIZER



4" EQUALIZER
HydraAir #10-8764 w/ 10-8706 cover
5.0 SQ. IN. OPEN AREA
Max Flow 31 GPM @ 2fps
COMPLIES W/ ANSI CODE ASME A112.19.8-07
UL APPROVED

SUCTION



5" HIGH FLOW SUCTIONS
HydraAir #10-8200 w/ 10-8011 anti-vortex cover
12.9 SQ. IN. OPEN AREA
Max Flow 80 GPM @ 2fps (anti-vortex @ 8fps)
COMPLIES W/ ANSI CODE ASME A112.19.8-07
UL APPROVED

JET



HYDRO INLETS
1-1/2" WATER - 1-1/2" AIR
HYDROAIR #10-5100
COMPLIES W/ ANSI CODE ASME A112.19.8-07
UL APPROVED

FILL



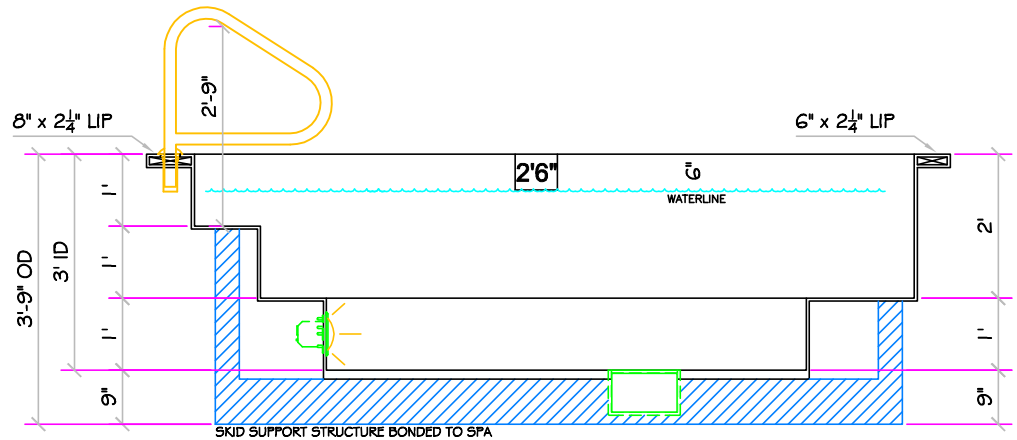
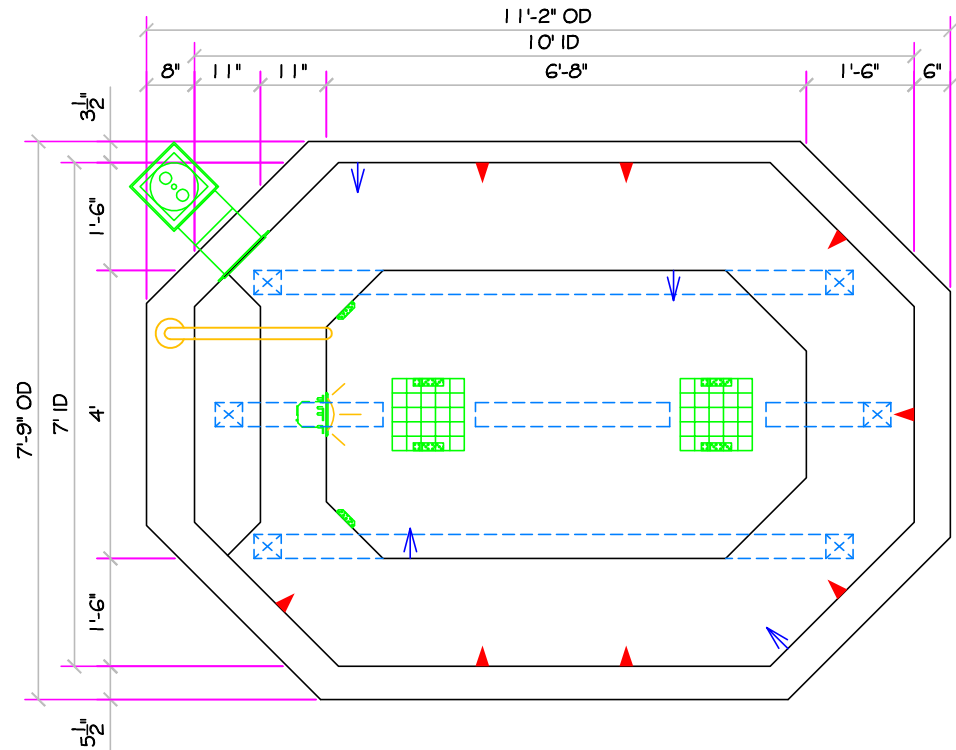
INLET FITTINGS
1-1/2" WALL TYPE W/ EYEBALL
HYDROAIR #10-3500
COMPLIES W/ ANSI CODE ASME A112.19.8-07
UL APPROVED

MAIN DRAIN

WATERWAY # 640-4720
12" X 12" FRAME,
68.9 SQ. IN. OPEN AREA
Max Flow 324 GPM @ 2fps
COMPLIES W/ ANSI CODE ASME A112.19.8-07 - UL APPROVED



SPECIFICATIONS	
DRY WEIGHT:	2700 LBS.
TOTAL WEIGHT:	11805 LBS.
WATER:	1092 GAL.
VOLUME:	146 Cu.Ft.
WEIGHT:	9105 LBS.
SURFACE AREA:	62 SQ. FT.
IAPMO#:	1138
FDA#:	2030305



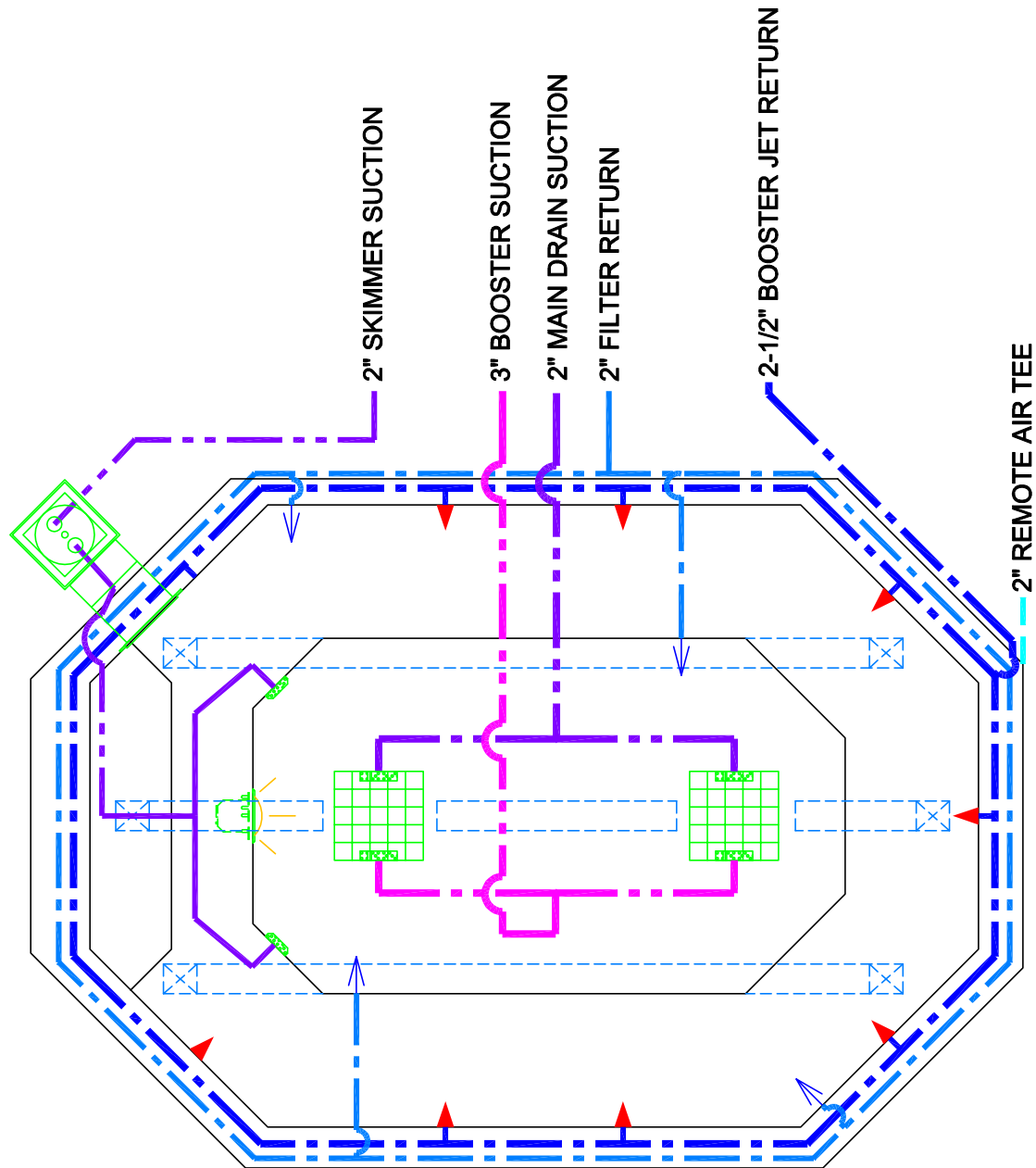
STANDARDS: Tile lined, polyester resin reinforced fiberglass spa shells in various colors, sizes, and configurations. May or may not be provided with insulation. All units, whether factory or field assembled, are required to have suction fittings installed which are listed to ANSI A112.19.8M-2007 for anti-hair and body entrapment per section 309-311 of the USPC 2006. All units are listed for above or below ground installation and may be portable or permanent. Manufactured in compliance with IAPMO ANSI Z124.1.-06.

ALL DIMENSIONS SUBJECT TO 1/4" TOLERANCES

These drawings, concepts, and details contained herein are the original proprietary designs of SPAS BY RENEE, developed over many years of experience in the pool and spa industry and as such are protected by the copyright laws of the United States Government. Reproduction of any of the above without written permission to do so by SPAS BY RENEE, is illegal.

SPAS BY RENEE
6280 PECOS ROAD STE. 600
LAS VEGAS, NV 89120
Office: (702) 458-8862 Fax: (702) 458-2315

SIZE A	DWG TYPE SD-1	DWG NO. WOMENS RIO	REV 2
SCALE 3/8" = 1'		DATE 10/22/2007	SHEET PAGE 1 OF 4

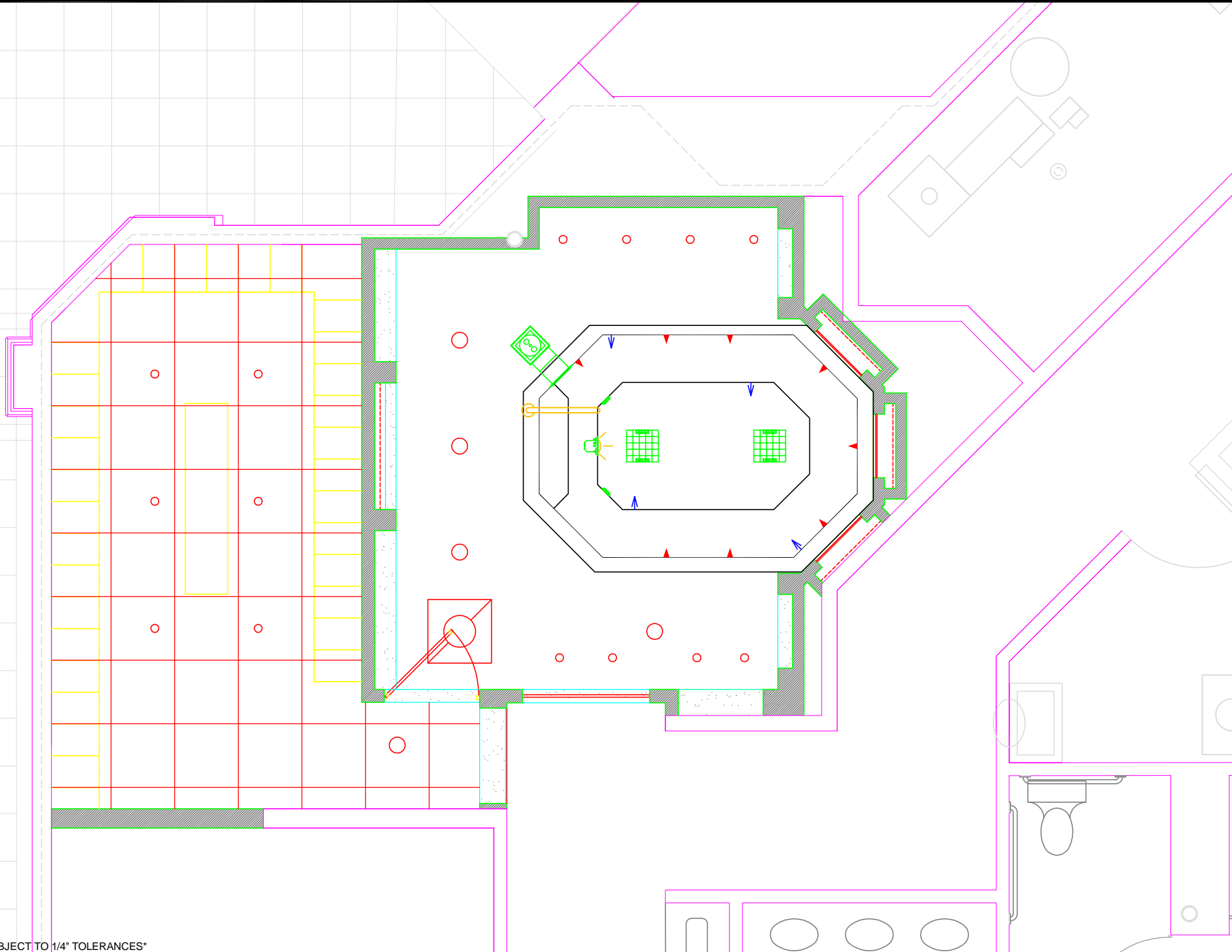


ALL DIMENSIONS SUBJECT TO 1/4" TOLERANCES

These drawings, concepts, and details contained herein are the original proprietary designs of SPAS BY RENEE, developed over many years of experience in the pool and spa industry and as such are protected by the copyright laws of the United States Government. Reproduction of any of the above without written permission to do so by SPAS BY RENEE, is illegal.

SPAS BY RENEE
6280 PECOS ROAD STE. 600
LAS VEGAS, NV 89120
Office: (702) 458-8862 Fax: (702) 458-2315

SIZE A	DWG TYPE PLUMBING	DWG NO. WOMENS RIO	REV 2
SCALE 1/2" = 1'		DATE 10/22/2007	SHEET PAGE 2 OF 4



ALL DIMENSIONS SUBJECT TO 1/4" TOLERANCES

These drawings, concepts, and details contained herein are the original proprietary designs of SPAS BY RENEE, developed over many years of experience in the pool and spa industry and as such are protected by the copyright laws of the United States Government. Reproduction of any of the above without written permission to do so by SPAS BY RENEE, is illegal.

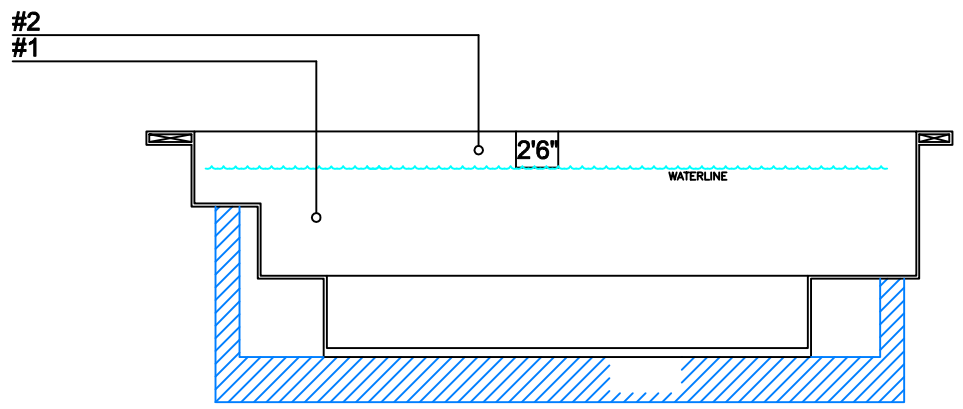
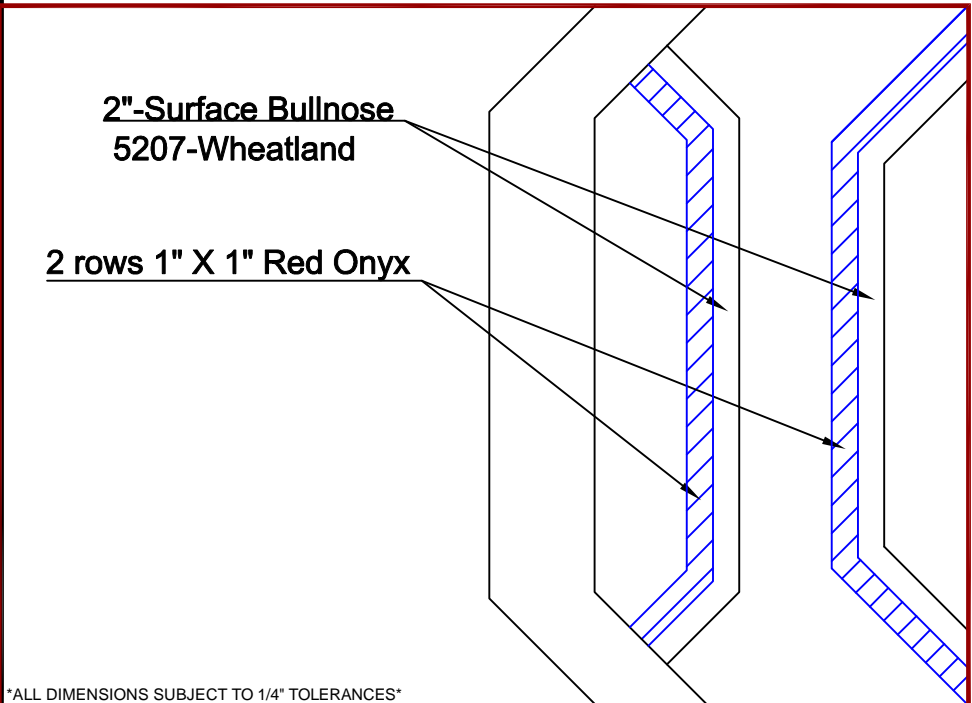
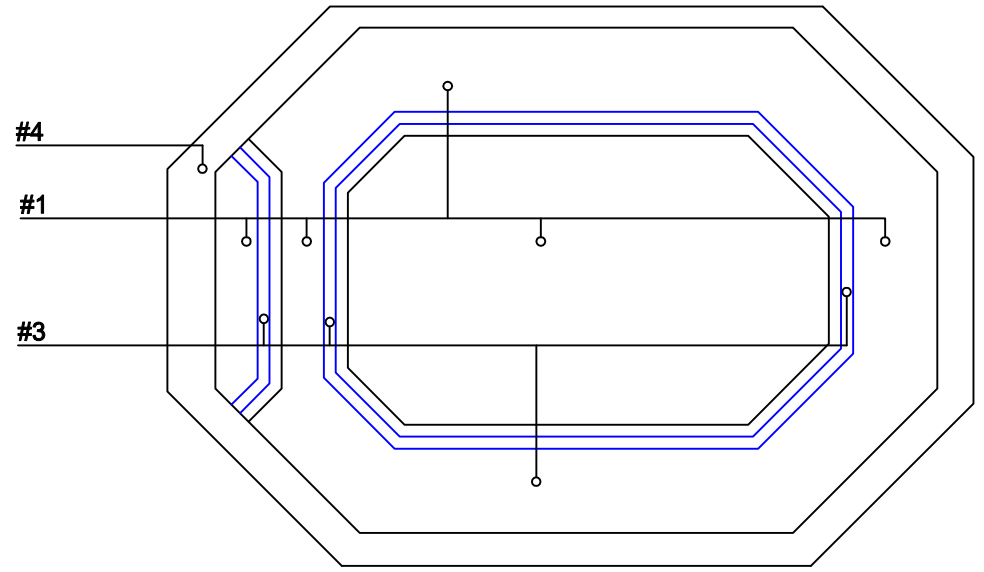
SPAS BY RENEE
6280 PECOS ROAD STE. 600
LAS VEGAS, NV 89120
Office: (702) 458-8862 Fax: (702) 458-2315

SIZE A	DWG TYPE SPA LAYOUT	DWG NO.	WOMENS RIO	REV 2
SCALE 1/4" = 1'		DATE 10/22/2007	SHEET	PAGE 3 OF 4

- #1 - FIELD TILE: Daltile Gold Rush Collection 5207 - Wheatland
 2 rows - 1" X 1" - Golden Sienna
 2 rows - 1" X 1" - Red Onyx
 2 rows - 1" X 1" - Golden Sienna
- #2 - WATERLINE (optional): 2 rows - 1" X 1" - Golden Sienna
- #3 - BENCH & STEP EDGES (optional): 1 row - 2" - Surface Bullnose 5207 - Wheatland
2 rows - 1" X 1" - Red Onyx - honed - Daltile
- #4 - TILED LIP (optional): By others

Date: _____
 Approval: _____

- #1 - GROUT: Custom Building Products #122 Linen
- #2 - GROUT: _____
- #3 - GROUT: _____



ALL DIMENSIONS SUBJECT TO 1/4" TOLERANCES

These drawings, concepts, and details contained herein are the original proprietary designs of SPAS BY RENEE, developed over many years of experience in the pool and spa industry and as such are protected by the copyright laws of the United States Government. Reproduction of any of the above without written permission to do so by SPAS BY RENEE, is illegal.

SPAS BY RENEE
6280 PECOS ROAD STE. 600
LAS VEGAS, NV 89120
Office: (702) 458-8862 Fax: (702) 458-2315

SIZE A	DWG TYPE TILE	DWG NO. WOMENS RIO	REV 2
SCALE 3/8" = 1'		DATE 10/22/2007	SHEET PAGE 4 OF 4

- 2" REMOTE AIR
- 2-1/2" BOOSTER JET RETURN
- 2" FILTER RETURN
- 3" BOOSTER SUCTION
- 1" WATER FILL
- 1-1/2" Reflection Pipe
- 2" MAIN DRAIN SUCTION



ALL DIMENSIONS SUBJECT TO 1/4" TOLERANCES

These drawings, concepts, and details contained herein are the original proprietary designs of SPAS BY RENEE, developed over many years of experience in the pool and spa industry and as such are protected by the copyright laws of the United States Government. Reproduction of any of the above without written permission to do so by SPAS BY RENEE, is illegal.

SPAS BY RENEE
6280 PECOS ROAD STE. 600
LAS VEGAS, NV 89120
Office: (702) 458-8862 Fax: (702) 458-2315

SIZE A	DWG TYPE Plumbing ID	DWG NO. MIRAGE 11'	REV 0
SCALE N/A		DATE 11/21/2007	SHEET PAGE 1 OF 1

IAPMO RESEARCH AND TESTING, INC.

5001 East Philadelphia Street, Ontario, California 91761-2816 • (909) 472-4100 Fax (909) 472-4244 • www.iapmo.org



LISTED PRODUCTS

IAPMO Research and Testing, Inc. is a product certification body which tests and inspects samples taken from the supplier's stock or from the market or a combination of both to verify compliance to the requirements of applicable codes and standards. This activity is coupled with periodic surveillance of the supplier's factory and warehouses as well as the assessment of the supplier's Quality Assurance System. This listing is subject to the conditions set forth in the characteristics below and is not to be construed as any recommendation, assurance or guarantee by IAPMO Research and Testing, Inc. of the product acceptance by Authorities Having Jurisdiction.

Effective Date: September 2007 Void After: September 2008

Product: Spa Shell (Tile Lined FRP) File No. SP-1138

Issued To: Nespa, Inc.
2800 Richter Ave Unit#e
Oroville, CA 95966

IDENTIFICATION: Company name and/or trademark, model designation and the USPC® certification mark shall be permanently affixed to the outside of each unit. Those models listed as shell only shall be marked with "SHELL ONLY". Units shall be permanently identified on finished visible surface with at least the company name or trademark.

CHARACTERISTICS: Tile lined, polyester resin reinforced fiberglass spa shells in various colors, sizes, and configurations. May or may not be provided with insulation. All units, whether factory or field assembled, are required to have suction fittings installed which are listed to ANSI A112.19.8M-1987 for anti-hair and body entrapment per section 308(d) and (e) of the USPC. All units are listed for above or below ground installation and may be portable or permanent.

Manufactured in compliance with IAPMO SPS 2-89 and ANSI Z124.1-87.

Products listed on this certificate have been tested by an IAPMO R&T recognized laboratory. This recognition has been granted based upon the


Chairman, Product Certification Committee


Executive Director

This listing is for the period indicated herein and is void after the date shown above. Any change in material, manufacturing process, marking or design without having first obtained the approval of the Product Certification Committee, or any evidence of non-compliance with applicable codes and standards or of inferior workmanship, may be deemed sufficient cause for revocation of this listing. Reproduction of or reference to this form for advertising purposes may be made only by specific written permission of IAPMO Research and Testing, Inc. Any alternation of this certificate could be grounds for revocation of the listing.



IAPMO RESEARCH AND TESTING, INC.

LISTED PRODUCTS

Page 2

Effective Date: September 2007 Void After: September 2008

Product: Spa Shell (Tile Lined FRP) File No. SP-1138

Issued To: Nespa, Inc.

laboratory's compliance to the applicable requirements of ISO/IEC 17025.

MODELS:

Acapulco	Mirage 11'
Acapulco II	Mirage 13'
Acapulco III	Mirage 15'
Acapulco IV	Mirage 17'
Blackthorne	Mirage 9'
Capri	Monaco
Caribbean	Nespa Swim Spa-12'
Corsica	Nespa Swim Spa-16'
Corsica-Modified	Nespa Swim Spa-18'
Eight Ft. Round	Nespa Swim Spa-20'
Imperia	Rimini
Imperia Ii	Rimini Commercial
Kidney*	Round* 11'
Legacy 10'	Round* 7'
Legacy 12'	Round* 9'
Legacy 14'	Serenity* 12'
Legacy 16'	Six Ft. Round
Legacy 18'	Tahoe*
Legacy 20'	Ten Ft. Round
Maxima	Vallarta

Note: Models with an "*" indicate that the tile size must be 2" x 2"

Sponsor of the Uniform Plumbing Code®, Uniform Mechanical Code®,
Uniform Swimming Pool, Spa and Hot Tub Code®,
and Uniform Solar Energy Code®

STANDARD NESPA IN-GROUND INSTALLATION *INSTRUCTIONS* **SET-UP AND EXCAVATION**

Prerequisites: Before installing your Nespa spa. You may be required to acquire a permit from your local State, County, and City building dept and or Health department. (Commercial jobs need Health Dept. Approval). Your spa installation must comply with the most current codes. (**Uniform Swimming Pool, Spas & Hot Tub Code 2006 (USPC 2006)**).

Spa drawings: Request from Nespa a current spa specific construction detail, plan and section, spa plumbing detail.

Delivery Access: Clearly determine the method of getting the spa to jobsite and into the hole. This may require the use of a crane, forklift, hoist, backhoe and/or manpower etc.

- 1) The following instructions are general guidelines and may not apply to your specific jobsite conditions. When excavating for your spa remember to provide for plumbing and light connection clearances. In order to determine how to excavate for your spa or swim spa, measure spas outside dimension (O.D.) and add minimum 3" to all sides. This 3" clearance is to accommodate jet and suction plumbing. This 3" clearance can change or be reduced upon request. Note: skimmer location, this area may have to be larger than 3", if commercial 22".
- 2) **Freeze Climates-** If the spa is placed into a vault (typical of freeze climates) a standard 18" or more of clearance minimum from spa perimeter should be provided. This dead air space is for possible future access to spa plumbing in case of a freeze. Area drain is mandatory. **Ask your local installer** for his experienced opinion. Do not hesitate to call us because we want to be sure that your installation progresses as smoothly as possible. If you have questions call us. (888) 479-4677.
- 2) **Hole depth** is determined by spa's outside height dimension. This height may vary depending if spa has skids or no skids. The spa lip may be finished or non-finished. How is the perimeter deck elevation transitioning to the spa? Focus on the finish surrounding deck elevations, thickness of the finish material on spa upper horizontal lip, equal to lip or under the spa lip. This material can be tile, stone, concrete or brick.
- 3) **Preplumb** the spa before it goes into the hole. If there are needs for electrical, bonding or control conduits run them as well before dropping in hole. Connect bond wire to niche would be best.
- 4) **Spa should sit on level 3 ½" thick reinforced concrete pad. Sweep debris off pad prior to dropping in hole.**
- 5) **Install spa** into the hole on top of concrete pad. Use the Eye bolts provided for crane, forklift etc. rigging. Do not hold onto pipes. Use caution with suction and jet plumbing when lowering into hole. **DO NOT STRESS FITTINGS!** Fill Spa with water and check for leaks prior to backfill.

- 6) **Check site reference** points for proper spa positioning (i.e., squaring to house, garage, etc.).
- 7) **Shim to level spa.** Shim with non-compression able material. Re square to house, or ref. point.
- 8) **Dry pack** with cement the gaps that have been created when shimming spa level.
- 9) **Connect pipes to tees** if spa is preplumb. Installers properly support your new plumbing from stressing spas preplumb fittings. After electrical conduit and bond wire is connected to light niche, water test spa before back filling with sand.
NOTE: All Nespa products are water tested prior to leaving factory.

ELECTRICAL:

- 1) All electrical connections to spa or equipment should comply with the most recent national electrical code (NEC), state and local codes.
- 2) Connect electrical conduit to light niche. This work should be done or reviewed by a licensed electrician.
- 3) To install spa light you will need to include inside the PVC conduit to the light niche a solid #8 coated copper wire. (If you are use brass conduit, internal bond wire is not required.) This bond wire should be pulled with the light cord at the same time. This bond wire needs to be attached to the internal bonding lug of the light niche. An approved encapsulate should be applied to bond wire connection in niche.
- 4) An external #8 copper wire shall be connected to the external bonding lug on the rear of the light niche. This copper wire can then be used for additional bonding requirements (i.e., handrails or any other metallic object within 5' of the spa.

PLUMBING:

- 1) **When plumbing a Nespa it is important to properly size the plumbing. We highly recommend that you follow the pump manufacturer's pipe sizing requirements and Uniform Swimming Pool, Spas & Hot Tub Code 2006 (USPC 2006). This code book is available at www.IAPMO.org or (909) 472 4100.**
- 2) The jet air venturi should be a Hartford loop design adjacent to spa shell and air entry point can be located next to spa or remotely at equipment.
- 3) Fill spa with water and test the system for leaks PRIOR to backfilling with sand.

SAND BACK FILL:

- 1) **With water in spa, back-fill around spa perimeter with dry plaster sand and wet wash with hydraulic attachment to hose. Let set for one hour and hydraulic dry again. Be sure water level in spa is at the highest level. Any questions please call us. (888) 479-4677.**
- 2) **If spa is free standing on elevated deck or a structure, it is important to fill spa with water and load area prior to installing coping or perimeter decking. If spa is installed in a vault situation a area drain is needed.**

NESPA ENTERPRISES INC.

2800 Richter Ave. Suite E

Oroville, CA 95966

Office: (888) 479-4677 Fax: (530) 534-9915

E-Mail: nespa@pacbell.net www.tiledspas.com

IN-GROUND

INSTALLATION

ALL DIMENSIONS SUBJECT TO 1/4" TOLERANCES

SCALE: 1/2" = 1'-0"

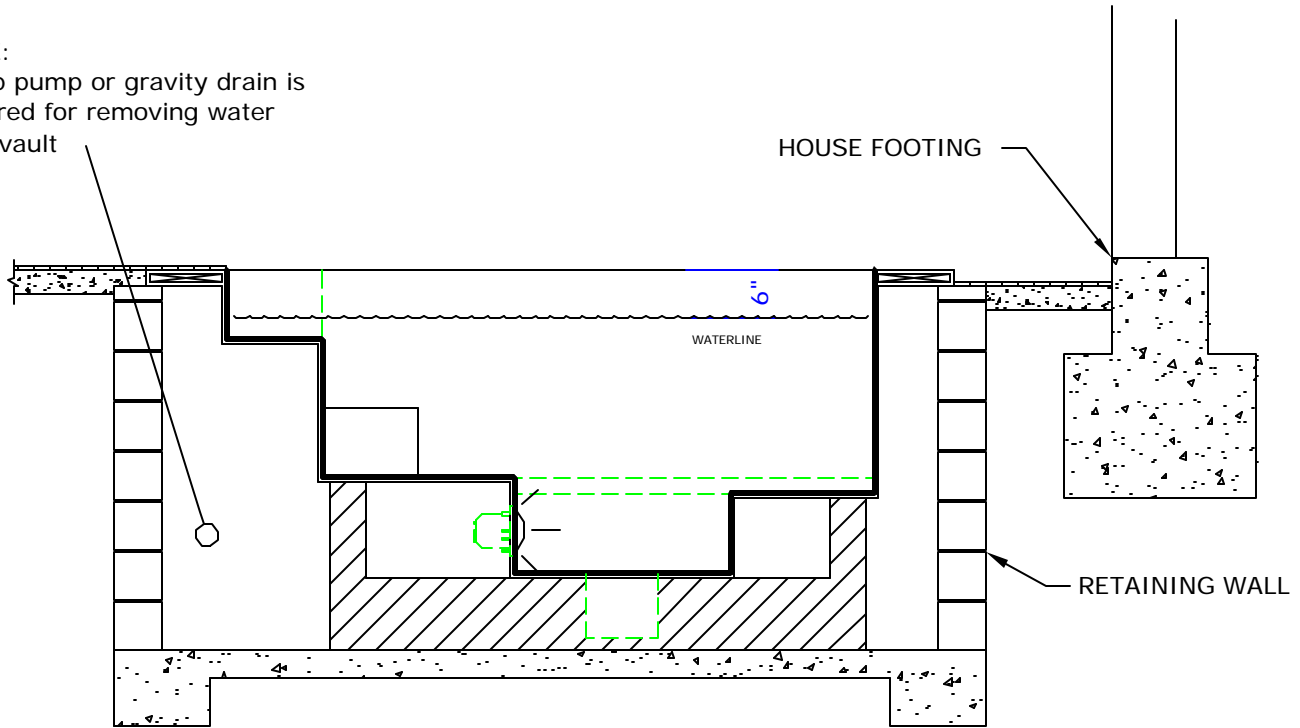
DATE: 3/27/02

JOB : STANDARD INSTALL

DW #: SI-1, SI-2

NOTE:

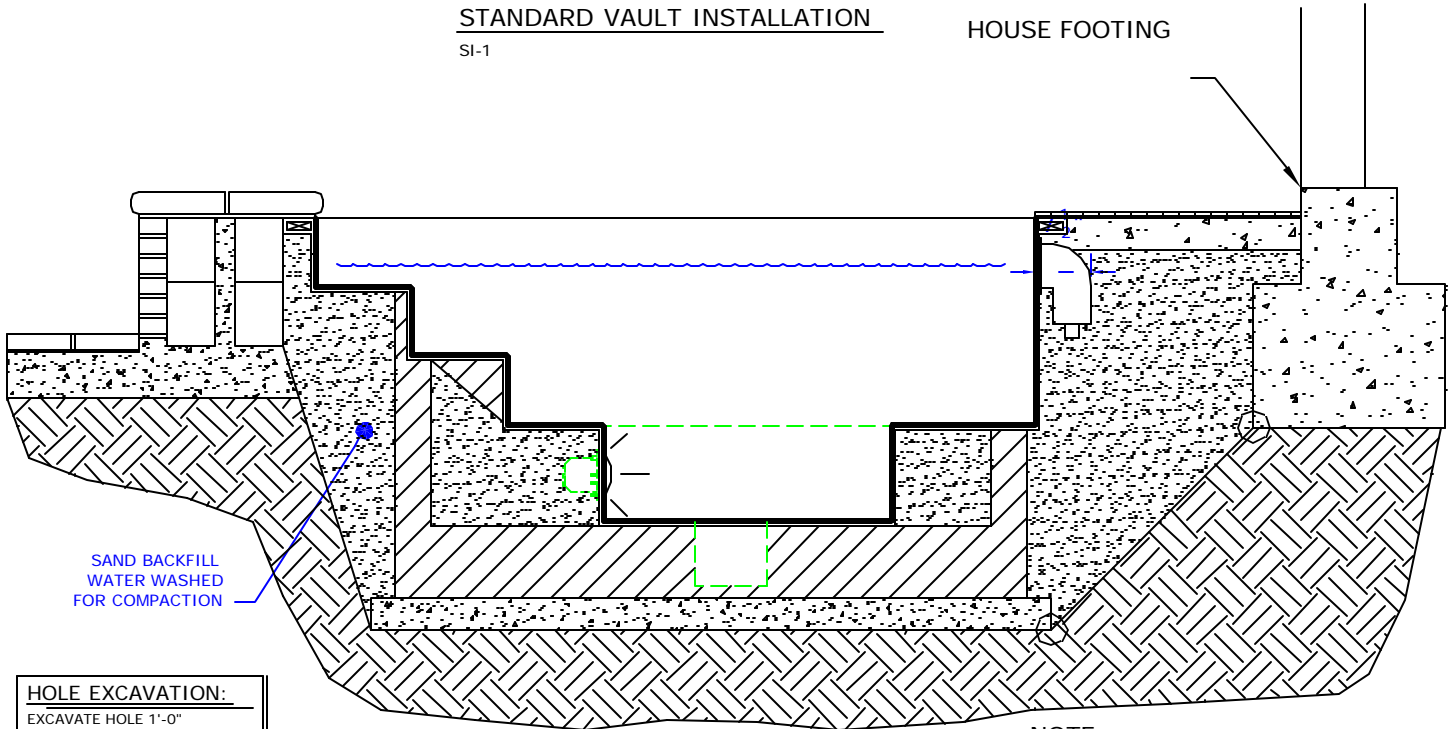
Sump pump or gravity drain is required for removing water from vault



STANDARD VAULT INSTALLATION

SI-1

HOUSE FOOTING



HOLE EXCAVATION:
EXCAVATE HOLE 1'-0"
LARGER THAN THE OUTSIDE
DIAMETER (OD) OF SPA

STANDARD INGROUND INSTALLATION

SI-2

NOTE:

Footing can not surcharge spa.
Slope from bottom of slab to
nearest corner of house footing
must not exceed 1" = 1".