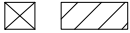


**SKID SUPPORT  
STRUCTURE\* BONDED  
TO SPA**



\*SKIDS SUPPLIED  
BY NESPA

**(A) LIGHT NICHE**



SPA BRIGHT, 120 V,  
100 WATT, 50' CORD,  
U.L. APPROVED

**(D) SKIMMER**



FRONT ACCESS  
SKIMMER, NSF  
APPROVED

**(F) JET**

HYDRO INLETS  
1-1/2" WATER - 1-1/2" AIR  
HYDROAIR #10-5100  
COMPLIES W/ ANSI CODE ASME A112.19.8-07  
UL APPROVED

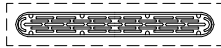
**(G) RETURN**

INLET FITTINGS  
1-1/2" WALL TYPE W/ EYEBALL  
HYDROAIR #10-3500  
COMPLIES W/ ANSI CODE ASME A112.19.8-07  
UL APPROVED

**(H) FILL**

INLET FITTINGS  
1-1/2" WALL TYPE W/ EYEBALL  
HYDROAIR #10-3500  
COMPLIES W/ ANSI CODE ASME A112.19.8-07  
UL APPROVED

**(M) MAIN DRAIN**



AquaStar 32CDFLFR, 32" Channel Drain,  
Approved Max Flow Rate: Floor = 236 GPM  
@ 3.4 fps Wall = 136 GPM @ 1.9 fps  
V.G.B Approved Safety Drain

**(N) HEATER**



NATURAL GAS HEATER  
PENTAIR / PAC FAB #460531  
W/ POWER ASSISTED  
VENTILATION,  
400,000 BTU

**(O) FILTER**



CARTRIDGE FILTER  
PENTAIR/PAC FAB - CC200  
200 SQ. FT. CLEAN &  
CLEAR SERIES

**(P) SELF-PRIMING  
PUMP AND MOTOR**

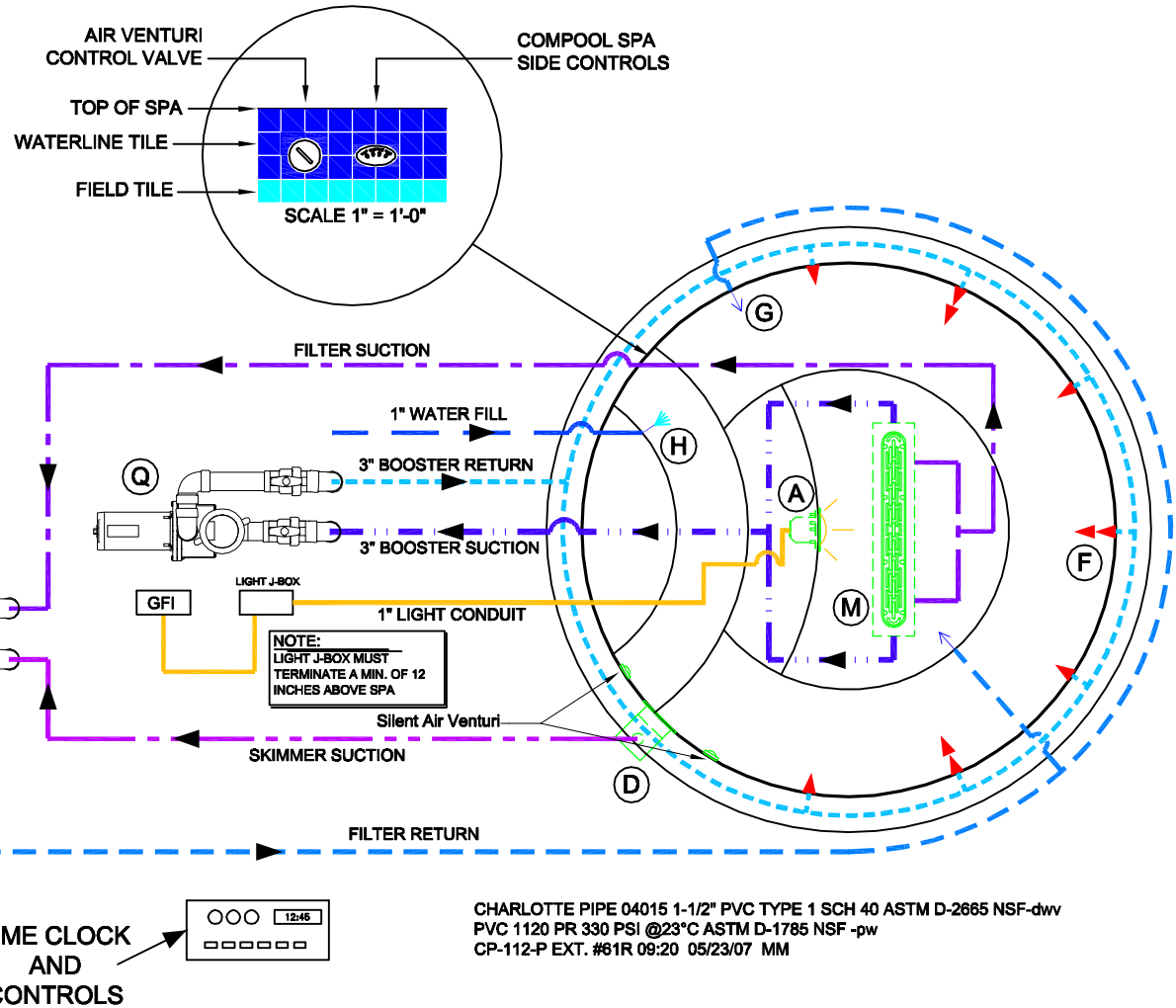


PENTAIR WFE-6  
99 GPM @ 60 FT. HEAD,  
1 1/2 HP, 230 VOLT, 20 AMP  
1 PHASE, 2" DISCHARGE  
UNIT WITH PUMP STRAINER

**(Q) SELF-PRIMING  
PUMP AND MOTOR**



PENTAIR WFE-12  
143 GPM @ 60 FT. HEAD,  
3 HP, 230 VOLT, 20 AMP  
1 PHASE, 2" DISCHARGE  
UNIT WITH PUMP STRAINER



\*ALL DIMENSIONS SUBJECT TO 1/4" TOLERANCES\*

These drawings, concepts, and details contained herein are the original proprietary designs of NESPA ENTERPRISES, developed over many years of experience in the pool and spa industry and as such are protected by the copyright laws of the United States Government. Reproduction of any of the above without written permission to do so by NESPA ENTERPRISES, is illegal.

**NESPA ENTERPRISES INC.**

2800 Richter Ave. Ste. C Oroville, CA 95966

Office: (530) 534-9910

Fax: (530) 534-9915

E-Mail: [sales@tiledspas.com](mailto:sales@tiledspas.com)

Web Site: [www.tiledspas.com](http://www.tiledspas.com)



SIZE  
A

DWG NAME

RESIDENTIAL SPA DETAILS

DWG TYPE

Layout (1)

SCALE 3/8" = 1'

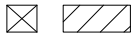
DATE 1/13/2009

SHEET

PAGE 1 OF 1

Jan 13, 2009 - 11:57am

**SKID SUPPORT STRUCTURE\* BONDED TO SPA**



\*SKIDS SUPPLIED BY NESPA

**(A) LIGHT NICHE**



SPA BRIGHT, 120 V, 100 WATT, 50' CORD, U.L. APPROVED

**(D) SKIMMER**



FRONT ACCESS SKIMMER, NSF APPROVED

**(F) JET**

HYDRO INLETS  
1-1/2" WATER - 1-1/2" AIR  
HYDROAIR #10-5100  
COMPLIES W/ ANSI CODE ASME A112.19.8-07  
UL APPROVED

**(G) RETURN**

INLET FITTINGS  
1-1/2" WALL TYPE W/ EYEBALL  
HYDROAIR #10-3500  
COMPLIES W/ ANSI CODE ASME A112.19.8-07  
UL APPROVED

**(H) FILL**

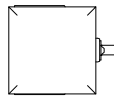
INLET FITTINGS  
1-1/2" WALL TYPE W/ EYEBALL  
HYDROAIR #10-3500  
COMPLIES W/ ANSI CODE ASME A112.19.8-07  
UL APPROVED

**(M) MAIN DRAIN**



AquaStar 32CDLFR, 32" Channel Drain,  
Approved Max Flow Rate: Floor = 236 GPM  
@ 3.4 fps Wall = 136 GPM @ 1.9 fps  
V.G.B Approved Safety Drain

**(N) HEATER**



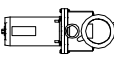
NATURAL GAS HEATER  
PENTAIR / PAC FAB #460531  
W/ POWER ASSISTED VENTILATION,  
400,000 BTU

**(O) FILTER**



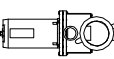
CARTRIDGE FILTER  
PENTAIR/PAC FAB - CC200  
200 SQ. FT. CLEAN & CLEAR SERIES

**(P) SELF-PRIMING PUMP AND MOTOR**

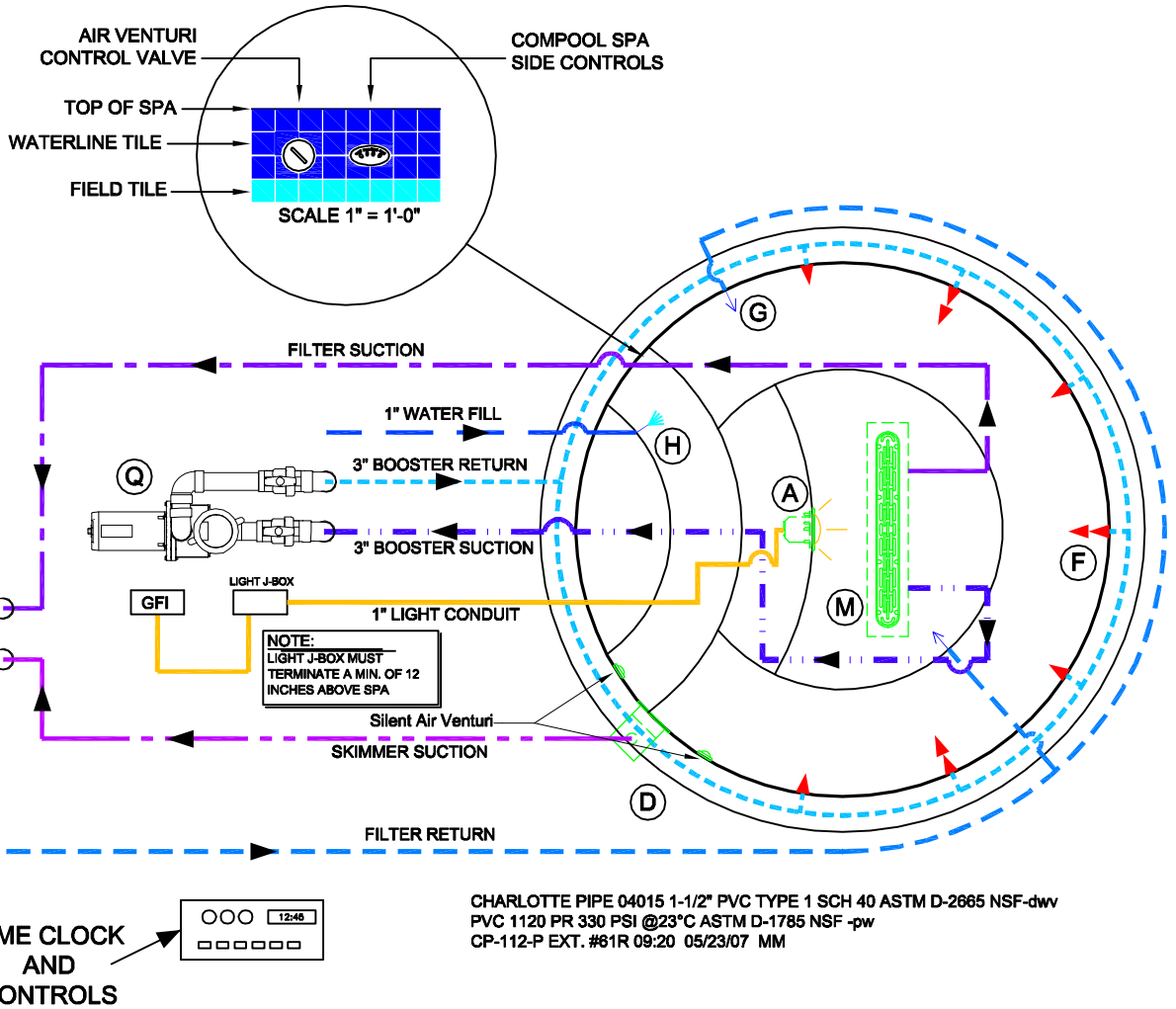


PENTAIR WFE-6  
99 GPM @ 60 FT. HEAD,  
1 1/2 HP, 230 VOLT, 20 AMP  
1 PHASE, 2" DISCHARGE  
UNIT WITH PUMP STRAINER

**(Q) SELF-PRIMING PUMP AND MOTOR**



PENTAIR WFE-12  
143 GPM @ 60 FT. HEAD,  
3 HP, 230 VOLT, 20 AMP  
1 PHASE, 2" DISCHARGE  
UNIT WITH PUMP STRAINER



\*ALL DIMENSIONS SUBJECT TO 1/4" TOLERANCES\*

These drawings, concepts, and details contained herein are the original proprietary designs of NESPA ENTERPRISES, developed over many years of experience in the pool and spa industry and as such are protected by the copyright laws of the United States Government. Reproduction of any of the above without written permission to do so by NESPA ENTERPRISES, is illegal.

**NESPA ENTERPRISES INC.**

2800 Richter Ave. Ste. C Oroville, CA 95966

Office: (530) 534-9910

Fax: (530) 534-9915

E-Mail: [sales@tiledspas.com](mailto:sales@tiledspas.com) Web Site: [www.tiledspas.com](http://www.tiledspas.com)



SIZE  
A

DWG NAME

RESIDENTIAL SPA DETAILS

DWG TYPE

Layout (2)

SCALE 3/8" = 1'

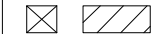
DATE 1/13/2009

SHEET

PAGE 1 OF 1

Jan 13, 2009 - 11:57am

**SKID SUPPORT STRUCTURE\* BONDED TO SPA**



\*SKIDS SUPPLIED BY NESPA

**(A) LIGHT NICHE**



SPA BRIGHT, 120 V, 100 WATT, 50' CORD, U.L. APPROVED

**(D) SKIMMER**



FRONT ACCESS SKIMMER, NSF APPROVED

**(F) JET**

HYDRO INLETS  
1-1/2" WATER - 1-1/2" AIR  
HYDROAIR #10-5100  
COMPLIES W/ ANSI CODE ASME A112.19.8-07  
UL APPROVED

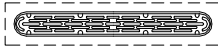
**(G) RETURN**

INLET FITTINGS  
1-1/2" WALL TYPE W/ EYEBALL  
HYDROAIR #10-3500  
COMPLIES W/ ANSI CODE ASME A112.19.8-07  
UL APPROVED

**(H) FILL**

INLET FITTINGS  
1-1/2" WALL TYPE W/ EYEBALL  
HYDROAIR #10-3500  
COMPLIES W/ ANSI CODE ASME A112.19.8-07  
UL APPROVED

**(M) MAIN DRAIN**



AquaStar 32CDLFR, 32" Channel Drain,  
Approved Max Flow Rate: Floor = 236 GPM @ 3.4 fps  
Wall = 136 GPM @ 1.9 fps  
V.G.B Approved Safety Drain

**(N) HEATER**



NATURAL GAS HEATER  
PENTAIR / PAC FAB #460531  
W/ POWER ASSISTED VENTILATION,  
400,000 BTU

**(O) FILTER**



CARTRIDGE FILTER  
PENTAIR/PAC FAB - CC200  
200 SQ. FT. CLEAN & CLEAR SERIES

**(P) SELF-PRIMING PUMP AND MOTOR**

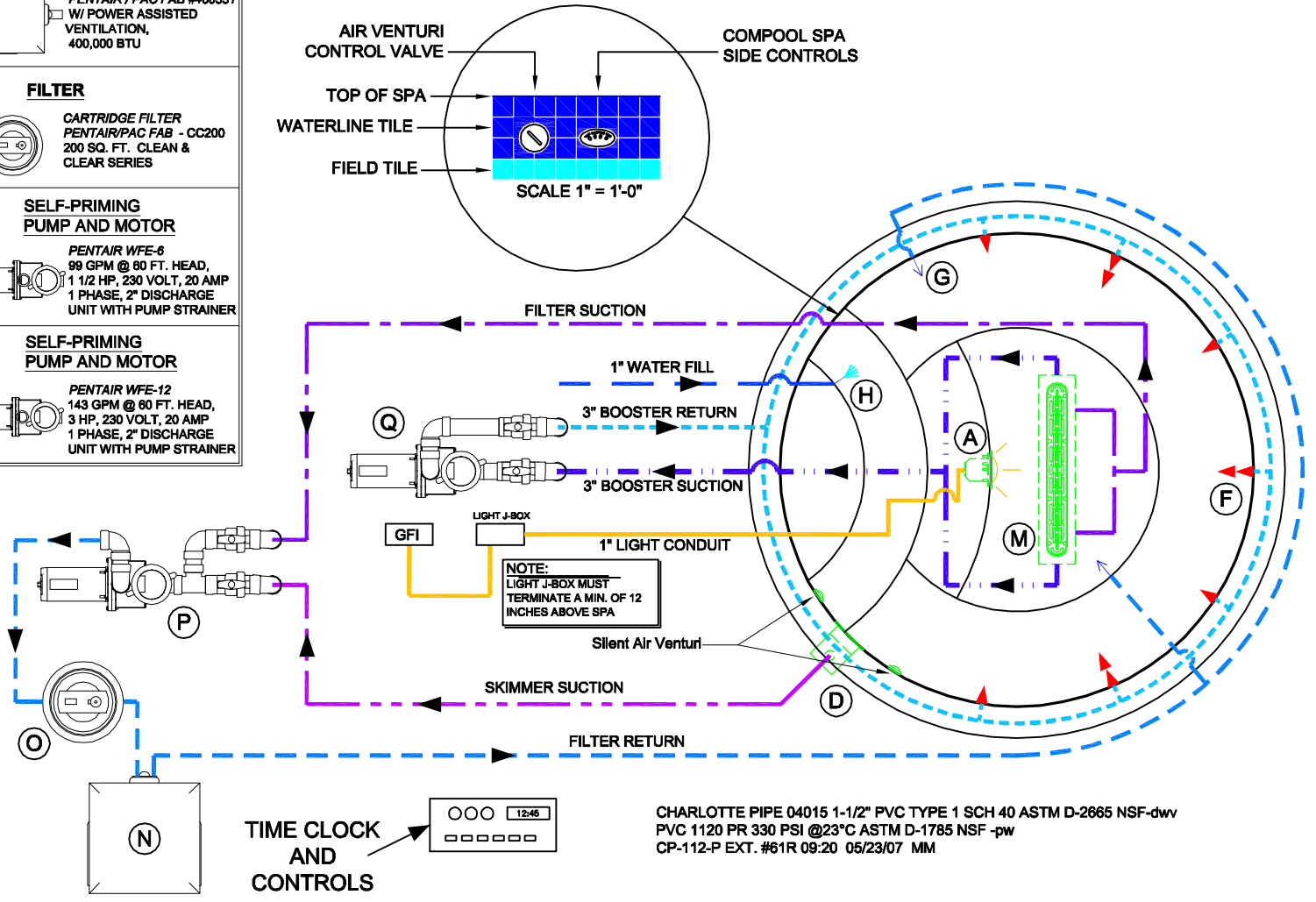


PENTAIR WFE-6  
99 GPM @ 80 FT. HEAD,  
1 1/2 HP, 230 VOLT, 20 AMP  
1 PHASE, 2" DISCHARGE  
UNIT WITH PUMP STRAINER

**(Q) SELF-PRIMING PUMP AND MOTOR**



PENTAIR WFE-12  
143 GPM @ 80 FT. HEAD,  
3 HP, 230 VOLT, 20 AMP  
1 PHASE, 2" DISCHARGE  
UNIT WITH PUMP STRAINER



CHARLOTTE PIPE 04015 1-1/2" PVC TYPE 1 SCH 40 ASTM D-2665 NSF-dwv  
PVC 1120 PR 330 PSI @23°C ASTM D-1785 NSF -pw  
CP-112-P EXT. #61R 09:20 05/23/07 MM

\*ALL DIMENSIONS SUBJECT TO 1/4" TOLERANCES\*

These drawings, concepts, and details contained herein are the original proprietary designs of NESPA ENTERPRISES, developed over many years of experience in the pool and spa industry and as such are protected by the copyright laws of the United States Government. Reproduction of any of the above without written permission to do so by NESPA ENTERPRISES, is illegal.

**NESPA ENTERPRISES INC.**  
2800 Richter Ave. Ste. C Oroville, CA 95966  
Office: (530) 534-9910 Fax: (530) 534-9915  
E-Mail: [sales@tiledspas.com](mailto:sales@tiledspas.com) Web Site: [www.tiledspas.com](http://www.tiledspas.com)

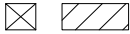


SIZE **A** DWG NAME **RESIDENTIAL SPA DETAILS**  
SCALE **3/8" = 1'** DATE **1/13/2009**

DWG TYPE **Layout (3)**  
SHEET **PAGE 1 OF 1**

Jan 13, 2009 - 11:58am

**SKID SUPPORT STRUCTURE\* BONDED TO SPA**



\*SKIDS SUPPLIED BY NESPA

**(A) LIGHT NICHE**



SPA BRIGHT, 120 V, 100 WATT, 50' CORD, U.L. APPROVED

**(D) SKIMMER**



FRONT ACCESS SKIMMER, NSF APPROVED

**(F) JET**

HYDRO INLETS  
1-1/2" WATER - 1-1/2" AIR  
HYDROAIR #10-5100  
COMPLIES W/ ANSI CODE ASME A112.19.8-07  
UL APPROVED

**(G) RETURN**

INLET FITTINGS  
1-1/2" WALL TYPE W/ EYEBALL  
HYDROAIR #10-3500  
COMPLIES W/ ANSI CODE ASME A112.19.8-07  
UL APPROVED

**(H) FILL**

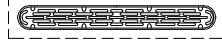
INLET FITTINGS  
1-1/2" WALL TYPE W/ EYEBALL  
HYDROAIR #10-3500  
COMPLIES W/ ANSI CODE ASME A112.19.8-07  
UL APPROVED

**(L) SIDEWALL SUCTION**



Paramount SDX 10"  
HIGH FLOW SAFETY DRAIN  
Area of Opening = 43.201 in/sq  
Velocity @ 200 GPM = 1.485 fps  
V.G.B Approved Safety Drain

**(M) MAIN DRAIN**



AquaStar 32CDFLFR, 32" Channel Drain,  
Approved Max Flow Rate: Floor = 236 GPM  
@ 3.4 fps Wall = 136 GPM @ 1.9 fps  
V.G.B Approved Safety Drain

**(N) HEATER**



NATURAL GAS HEATER  
PENTAIR / PAC FAB #460531  
W/ POWER ASSISTED VENTILATION,  
400,000 BTU

**(O) FILTER**



CARTRIDGE FILTER  
PENTAIR/PAC FAB - CC200  
200 SQ. FT. CLEAN & CLEAR SERIES

**(P) SELF-PRIMING PUMP AND MOTOR**

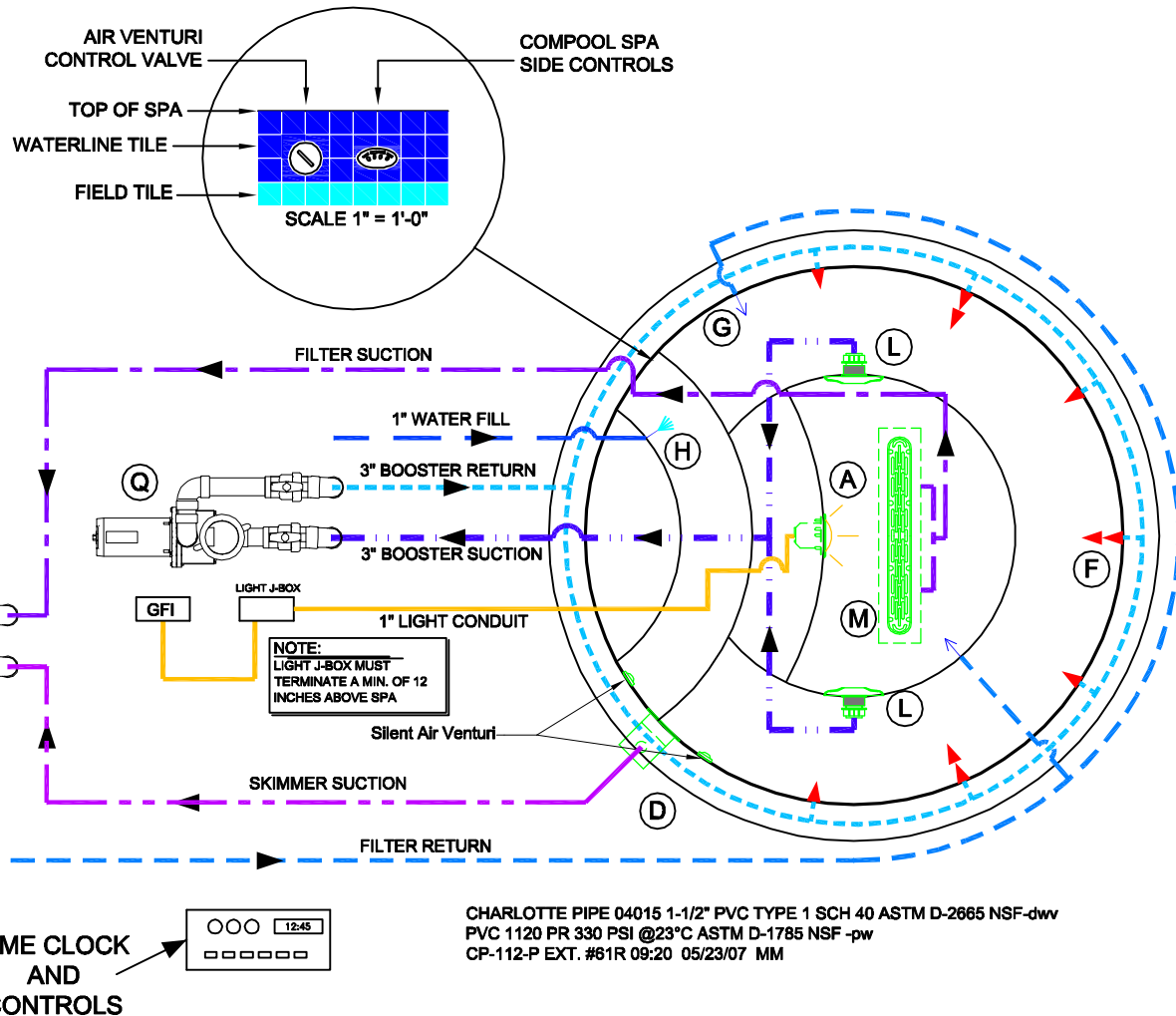


PENTAIR WFE-6  
99 GPM @ 60 FT. HEAD,  
1 1/2 HP, 230 VOLT, 20 AMP  
1 PHASE, 2" DISCHARGE  
UNIT WITH PUMP STRAINER

**(Q) SELF-PRIMING PUMP AND MOTOR**



PENTAIR WFE-12  
143 GPM @ 60 FT. HEAD,  
3 HP, 230 VOLT, 20 AMP  
1 PHASE, 2" DISCHARGE  
UNIT WITH PUMP STRAINER



\*ALL DIMENSIONS SUBJECT TO 1/4" TOLERANCES\*

These drawings, concepts, and details contained herein are the original proprietary designs of NESPA ENTERPRISES, developed over many years of experience in the pool and spa industry and as such are protected by the copyright laws of the United States Government. Reproduction of any of the above without written permission to do so by NESPA ENTERPRISES, is illegal.

**NESPA ENTERPRISES INC.**  
2800 Richter Ave. Ste. C Oroville, CA 95966  
Office: (530) 534-9910 Fax: (530) 534-9915  
E-Mail: [sales@tiledspas.com](mailto:sales@tiledspas.com) Web Site: [www.tiledspas.com](http://www.tiledspas.com)

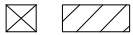


SIZE <b>A</b>	DWG NAME <b>RESIDENTIAL SPA DETAILS</b>
SCALE <b>3/8" = 1'</b>	DATE <b>1/13/2009</b>

DWG TYPE <b>Layout (4)</b>
SHEET <b>PAGE 1 OF 1</b>

Jan 13, 2009 - 11:58am

**SKID SUPPORT  
STRUCTURE\* BONDED  
TO SPA**



\*SKIDS SUPPLIED  
BY NESPA

**(A) LIGHT NICHE**



SPA BRIGHT, 120 V,  
100 WATT, 50' CORD,  
U.L. APPROVED

**(D) SKIMMER**



FRONT ACCESS  
SKIMMER, NSF  
APPROVED

**(F) JET**



HYDRO INLETS  
1-1/2" WATER - 1-1/2" AIR  
HYDROAIR #10-5100  
COMPLIES W/ ANSI CODE ASME A112.19.8-07  
UL APPROVED

**(G) RETURN**



INLET FITTINGS  
1-1/2" WALL TYPE W/ EYEBALL  
HYDROAIR #10-3500  
COMPLIES W/ ANSI CODE ASME A112.19.8-07  
UL APPROVED

**(H) FILL**



INLET FITTINGS  
1-1/2" WALL TYPE W/ EYEBALL  
HYDROAIR #10-3500  
COMPLIES W/ ANSI CODE ASME A112.19.8-07  
UL APPROVED

**(L) SIDEWALL SUCTION**



Paramount SDX 10"  
HIGH FLOW SAFETY DRAIN  
Area of Opening = 43.201 in/sq  
Velocity @ 200 GPM = 1.485 fps  
V.G.B Approved Safety Drain

**(M) MAIN DRAIN**



AquaStar 8AV, 8" Dia Frame,  
Approved Max Flow Rate:  
Floor = 88 GPM @ 3.2 fps  
Wall = 70 GPM @ 2.6 fps  
8.8 Sq In - Open Area  
V.G.B Approved Safety Drain

**(N) HEATER**



NATURAL GAS HEATER  
PENTAIR / PAC FAB #480531  
W/ POWER ASSISTED  
VENTILATION,  
400,000 BTU

**(O) FILTER**



CARTRIDGE FILTER  
PENTAIR/PAC FAB - CC200  
200 SQ. FT. CLEAN &  
CLEAR SERIES

**(P) SELF-PRIMING  
PUMP AND MOTOR**

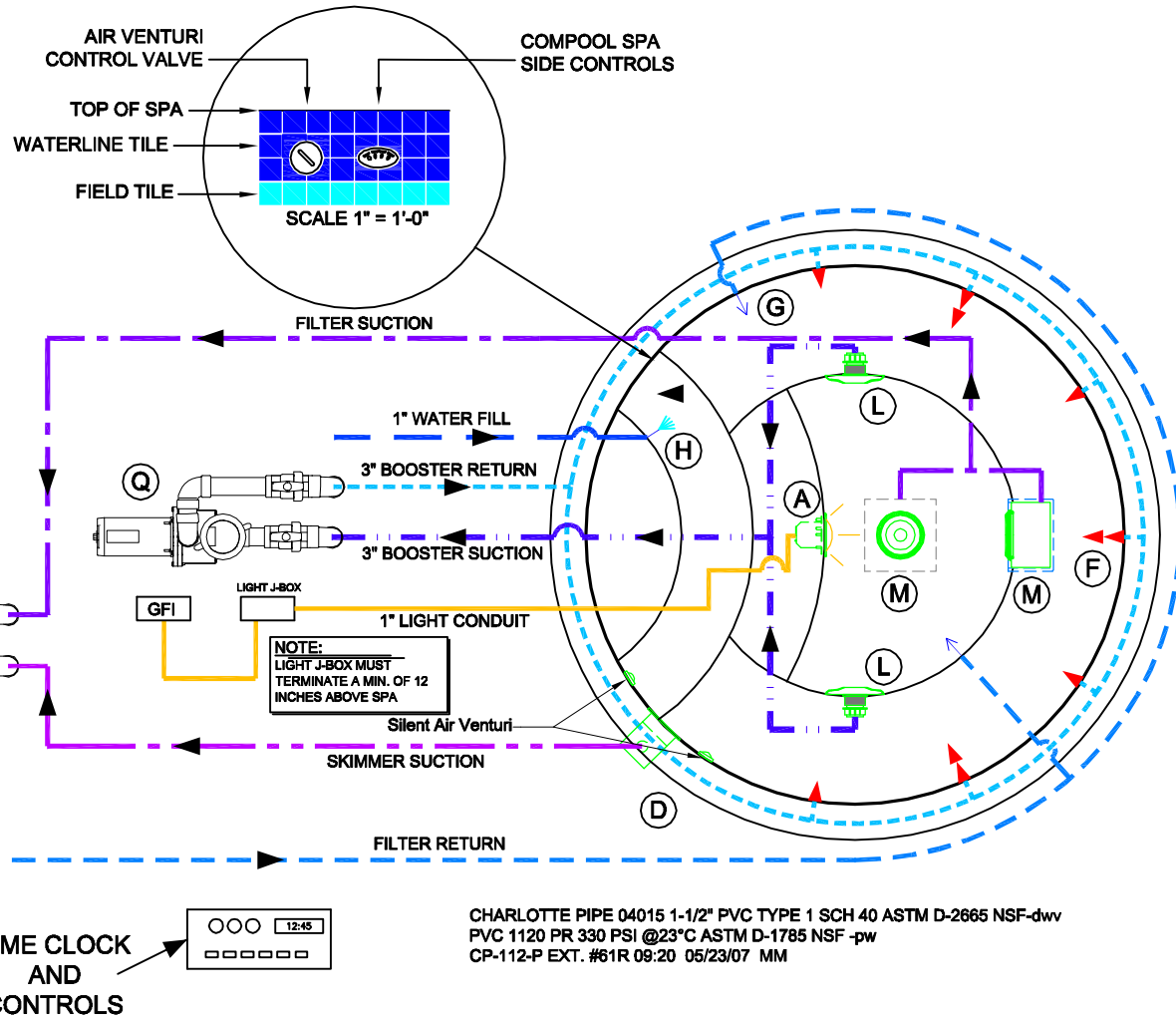


PENTAIR WFE-6  
99 GPM @ 80 FT. HEAD,  
1 1/2 HP, 230 VOLT, 20 AMP  
1 PHASE, 2" DISCHARGE  
UNIT WITH PUMP STRAINER

**(Q) SELF-PRIMING  
PUMP AND MOTOR**



PENTAIR WFE-12  
143 GPM @ 80 FT. HEAD,  
3 HP, 230 VOLT, 20 AMP  
1 PHASE, 2" DISCHARGE  
UNIT WITH PUMP STRAINER



NOTE:  
LIGHT J-BOX MUST  
TERMINATE A MIN. OF 12  
INCHES ABOVE SPA

TIME CLOCK  
AND  
CONTROLS



CHARLOTTE PIPE 04015 1-1/2" PVC TYPE 1 SCH 40 ASTM D-2665 NSF-dwv  
PVC 1120 PR 330 PSI @23°C ASTM D-1785 NSF -pw  
CP-112-P EXT. #61R 09:20 05/23/07 MM

\*ALL DIMENSIONS SUBJECT TO 1/4" TOLERANCES\*

Jan 13, 2009 - 11:58am

These drawings, concepts, and details contained herein are the original proprietary designs of NESPA ENTERPRISES, developed over many years of experience in the pool and spa industry and as such are protected by the copyright laws of the United States Government. Reproduction of any of the above without written permission to do so by NESPA ENTERPRISES, is illegal.

**NESPA ENTERPRISES INC.**

2800 Richter Ave. Ste. C Oroville, CA 95966

Office: (530) 534-9910

Fax: (530) 534-9915

E-Mail: [sales@tiledspas.com](mailto:sales@tiledspas.com)

Web Site: [www.tiledspas.com](http://www.tiledspas.com)



SIZE  
A

DWG NAME  
RESIDENTIAL SPA DETAILS

DWG TYPE  
Layout (5)

SCALE 3/8" = 1'

DATE 1/13/2009

SHEET PAGE 1 OF 1

**SKID SUPPORT STRUCTURE\* BONDED TO SPA**



\*SKIDS SUPPLIED BY NESPA

**(A) LIGHT NICHE**



SPA BRIGHT, 120 V, 100 WATT, 50' CORD, U.L. APPROVED

**(D) SKIMMER**



FRONT ACCESS SKIMMER, NSF APPROVED

**(F) JET**

HYDRO INLETS  
1-1/2" WATER - 1-1/2" AIR  
HYDROAIR #10-5100  
COMPLIES W/ ANSI CODE ASME A112.19.8-07  
UL APPROVED

**(G) RETURN**

INLET FITTINGS  
1-1/2" WALL TYPE W/ EYEBALL  
HYDROAIR #10-3500  
COMPLIES W/ ANSI CODE ASME A112.19.8-07  
UL APPROVED

**(H) FILL**

INLET FITTINGS  
1-1/2" WALL TYPE W/ EYEBALL  
HYDROAIR #10-3500  
COMPLIES W/ ANSI CODE ASME A112.19.8-07  
UL APPROVED

**(M) MAIN DRAIN**



AquaStar WAV12, 12" X 12" Frame,  
Approved Max Flow Rate:  
Floor/Wall = 361 GPM @ 1.3 fps  
Floor/Wall = 400 GPM @ 1.5 fps  
85.2 Sq In - Open Area  
V.G.B Approved Safety Drain

**(N) HEATER**



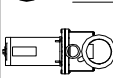
NATURAL GAS HEATER  
PENTAIR / PAC FAB #460631  
W/ POWER ASSISTED VENTILATION,  
400,000 BTU

**(O) FILTER**



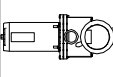
CARTRIDGE FILTER  
PENTAIR/PAC FAB - CC200  
200 SQ. FT. CLEAN & CLEAR SERIES

**(P) SELF-PRIMING PUMP AND MOTOR**

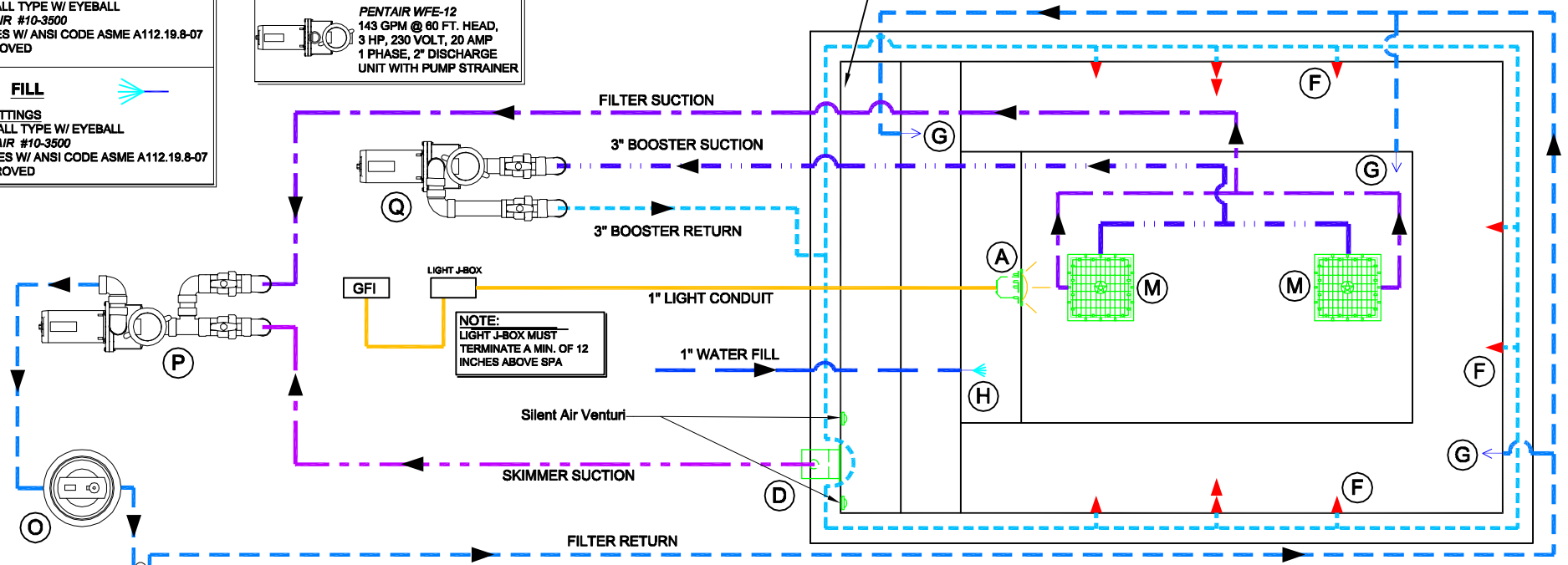
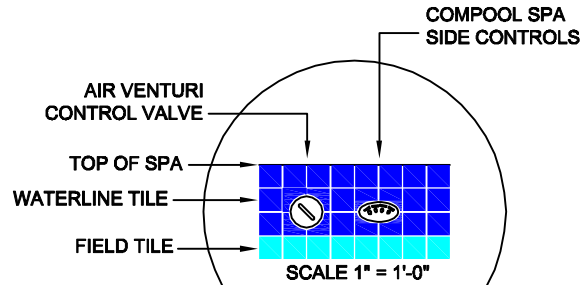


PENTAIR WFE-6  
99 GPM @ 80 FT. HEAD,  
1 1/2 HP, 230 VOLT, 20 AMP  
1 PHASE, 2" DISCHARGE  
UNIT WITH PUMP STRAINER

**(Q) SELF-PRIMING PUMP AND MOTOR**



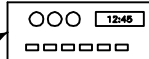
PENTAIR WFE-12  
143 GPM @ 80 FT. HEAD,  
3 HP, 230 VOLT, 20 AMP  
1 PHASE, 2" DISCHARGE  
UNIT WITH PUMP STRAINER



**NOTE:**  
LIGHT J-BOX MUST TERMINATE A MIN. OF 12 INCHES ABOVE SPA

CHARLOTTE PIPE 04015 1-1/2" PVC TYPE 1 SCH 40 ASTM D-2665 NSF-dwv  
PVC 1120 PR 330 PSI @23°C ASTM D-1785 NSF -pw  
CP-112-P EXT. #61R 09:20 05/23/07 MM

**TIME CLOCK AND CONTROLS**



\*ALL DIMENSIONS SUBJECT TO 1/4" TOLERANCES\*

Jan 13, 2009 - 11:58am

These drawings, concepts, and details contained herein are the original proprietary designs of NESPA ENTERPRISES, developed over many years of experience in the pool and spa industry and as such are protected by the copyright laws of the United States Government. Reproduction of any of the above without written permission to do so by NESPA ENTERPRISES, is illegal.

**NESPA ENTERPRISES INC.**

2800 Richter Ave. Ste. C Oroville, CA 95966

Office: (530) 534-9910

Fax: (530) 534-9915

E-Mail: [sales@tiledspas.com](mailto:sales@tiledspas.com)

Web Site: [www.tiledspas.com](http://www.tiledspas.com)



SIZE  
**A**

DWG NAME

**RESIDENTIAL SPA DETAILS**

DWG TYPE

**Layout (6)**

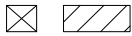
SCALE **3/8" = 1'**

DATE **1/13/2009**

SHEET

**PAGE 1 OF 1**

**SKID SUPPORT STRUCTURE\* BONDED TO SPA**



\*SKIDS SUPPLIED BY NESPA

**(A) LIGHT NICHE**



SPA BRIGHT, 120 V, 100 WATT, 50' CORD, U.L. APPROVED

**(D) SKIMMER**



FRONT ACCESS SKIMMER, NSF APPROVED

**(F) JET**

HYDRO INLETS  
1-1/2" WATER - 1-1/2" AIR  
HYDROAIR #10-5100  
COMPLIES W/ ANSI CODE ASME A112.19.8-07  
UL APPROVED

**(G) RETURN**

INLET FITTINGS  
1-1/2" WALL TYPE W/ EYEBALL  
HYDROAIR #10-3500  
COMPLIES W/ ANSI CODE ASME A112.19.8-07  
UL APPROVED

**(H) FILL**

INLET FITTINGS  
1-1/2" WALL TYPE W/ EYEBALL  
HYDROAIR #10-3500  
COMPLIES W/ ANSI CODE ASME A112.19.8-07  
UL APPROVED

**(M) MAIN DRAIN**



AquaStar 32CDFLFR, 32" Channel Drain,  
Approved Max Flow Rate: Floor = 236 GPM  
@ 3.4 fps Wall = 136 GPM @ 1.9 fps  
V.G.B Approved Safety Drain

**(N) HEATER**



NATURAL GAS HEATER  
PENTAIR / PAC FAB #480531  
W/ POWER ASSISTED VENTILATION,  
400,000 BTU

**(O) FILTER**



CARTRIDGE FILTER  
PENTAIR/PAC FAB - CC200  
200 SQ. FT. CLEAN & CLEAR SERIES

**(P) SELF-PRIMING PUMP AND MOTOR**

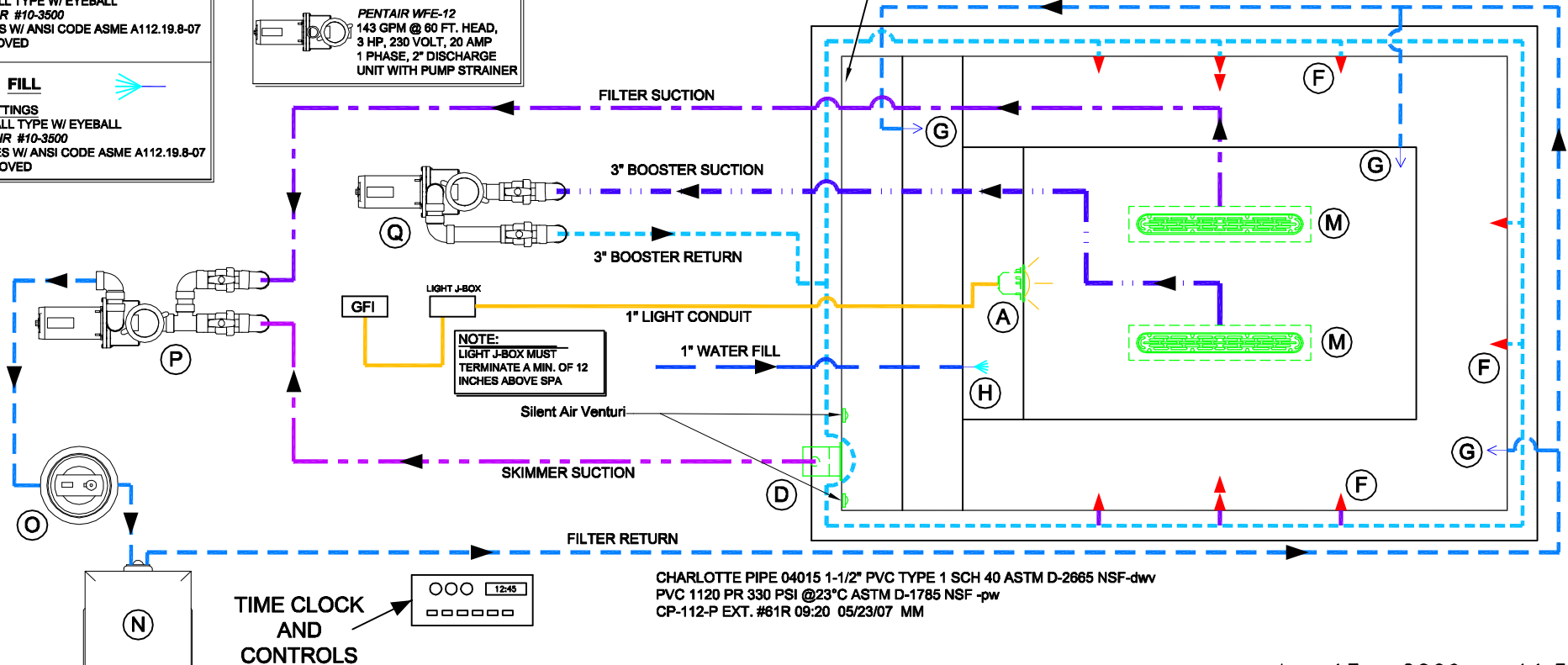
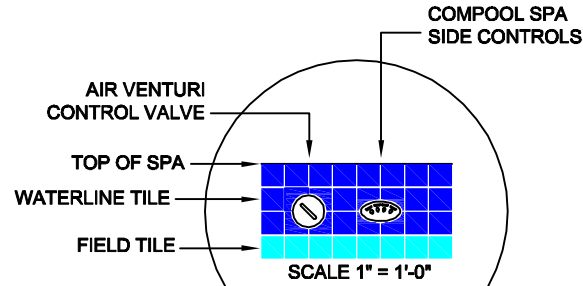


PENTAIR WFE-6  
99 GPM @ 80 FT. HEAD,  
1 1/2 HP, 230 VOLT, 20 AMP  
1 PHASE, 2" DISCHARGE  
UNIT WITH PUMP STRAINER

**(Q) SELF-PRIMING PUMP AND MOTOR**



PENTAIR WFE-12  
143 GPM @ 80 FT. HEAD,  
3 HP, 230 VOLT, 20 AMP  
1 PHASE, 2" DISCHARGE  
UNIT WITH PUMP STRAINER



CHARLOTTE PIPE 04015 1-1/2" PVC TYPE 1 SCH 40 ASTM D-2665 NSF-dwv  
PVC 1120 PR 330 PSI @23°C ASTM D-1785 NSF -pw  
CP-112-P EXT. #61R 09:20 05/23/07 MM

\*ALL DIMENSIONS SUBJECT TO 1/4" TOLERANCES\*

These drawings, concepts, and details contained herein are the original proprietary designs of NESPA ENTERPRISES, developed over many years of experience in the pool and spa industry and as such are protected by the copyright laws of the United States Government. Reproduction of any of the above without written permission to do so by NESPA ENTERPRISES, is illegal.

**NESPA ENTERPRISES INC.**  
2800 Richter Ave. Ste. C Oroville, CA 95966  
Office: (530) 534-9910 Fax: (530) 534-9915  
E-Mail: [sales@tiledspas.com](mailto:sales@tiledspas.com) Web Site: [www.tiledspas.com](http://www.tiledspas.com)

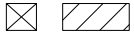


SIZE <b>A</b>	DWG NAME <b>RESIDENTIAL SPA DETAILS</b>
SCALE <b>3/8" = 1'</b>	DATE <b>1/13/2009</b>

DWG TYPE <b>Layout (7)</b>
SHEET <b>PAGE 1 OF 1</b>

Jan 13, 2009 - 11:58am

**SKID SUPPORT STRUCTURE\* BONDED TO SPA**



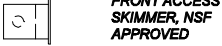
\*SKIDS SUPPLIED BY NESPA

**(A) LIGHT NICHE**



SPA BRIGHT, 120 V, 100 WATT, 50' CORD, U.L. APPROVED

**(D) SKIMMER**



FRONT ACCESS SKIMMER, NSF APPROVED

**(F) JET**

HYDRO INLETS  
1-1/2" WATER - 1-1/2" AIR  
HYDROAIR #10-5100  
COMPLIES W/ ANSI CODE ASME A112.19.8-07  
UL APPROVED

**(G) RETURN**

INLET FITTINGS  
1-1/2" WALL TYPE W/ EYEBALL  
HYDROAIR #10-3500  
COMPLIES W/ ANSI CODE ASME A112.19.8-07  
UL APPROVED

**(H) FILL**

INLET FITTINGS  
1-1/2" WALL TYPE W/ EYEBALL  
HYDROAIR #10-3500  
COMPLIES W/ ANSI CODE ASME A112.19.8-07  
UL APPROVED

**(L) SIDEWALL SUCTION**



Paramount SDX 10" HIGH FLOW SAFETY DRAIN  
Area of Opening = 43.201 in/sq  
Velocity @ 200 GPM = 1.485 fps  
V.G.B Approved Safety Drain

**(M) MAIN DRAIN**



AquaStar 10AV, 10" Dia Frame, Approved Max Flow Rate:  
Floor = 206 GPM @ 5.8 fps  
Wall = 96 GPM @ 2.8 fps  
Max Flow = 210GPM  
V.G.B Approved Safety Drain

**(N) HEATER**



NATURAL GAS HEATER  
PENTAIR / PAC FAB #480531  
W/ POWER ASSISTED VENTILATION,  
400,000 BTU

**(O) FILTER**



CARTRIDGE FILTER PENTAIR/PAC  
FAB - CC200 200 SQ. FT. CLEAN & CLEAR SERIES

**(P) SELF-PRIMING PUMP AND MOTOR**

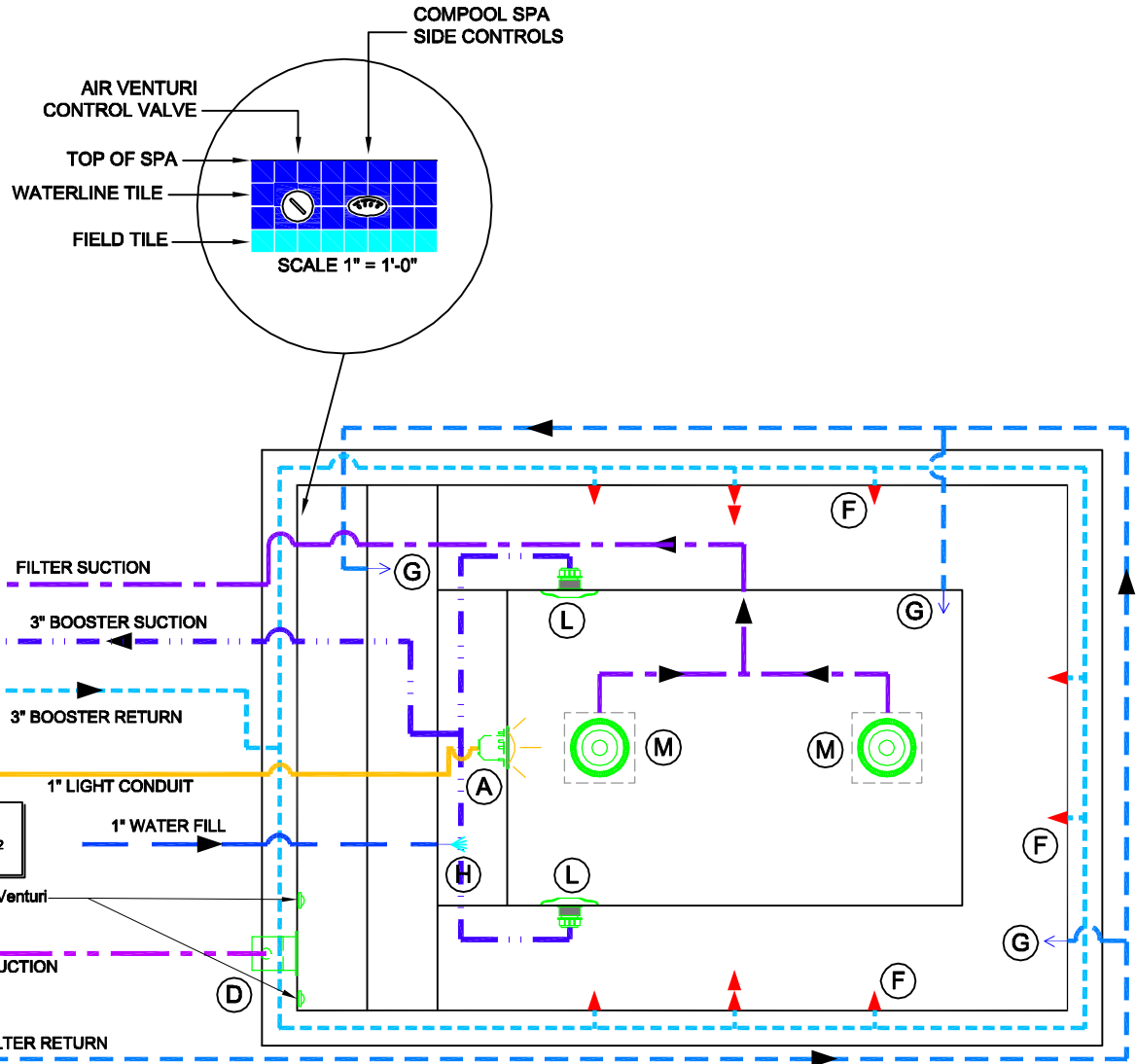


PENTAIR WFE-6  
99 GPM @ 80 FT. HEAD,  
1 1/2 HP, 230 VOLT, 20 AMP  
1 PHASE, 2" DISCHARGE  
UNIT WITH PUMP STRAINER

**(Q) SELF-PRIMING PUMP AND MOTOR**



PENTAIR WFE-12  
143 GPM @ 80 FT. HEAD,  
3 HP, 230 VOLT, 20 AMP  
1 PHASE, 2" DISCHARGE  
UNIT WITH PUMP STRAINER



NOTE:  
LIGHT J-BOX MUST TERMINATE A MIN. OF 12 INCHES ABOVE SPA

CHARLOTTE PIPE 04015 1-1/2" PVC TYPE 1 SCH 40 ASTM D-2665 NSF-dwv  
PVC 1120 PR 330 PSI @23°C ASTM D-1785 NSF -pw  
CP-112-P EXT. #61R 09:20 05/23/07 MM

\*ALL DIMENSIONS SUBJECT TO 1/4" TOLERANCES\*

Jan 13, 2009 - 11:58am

These drawings, concepts, and details contained herein are the original proprietary designs of NESPA ENTERPRISES, developed over many years of experience in the pool and spa industry and as such are protected by the copyright laws of the United States Government. Reproduction of any of the above without written permission to do so by NESPA ENTERPRISES, is illegal.

**NESPA ENTERPRISES INC.**  
2800 Richter Ave. Ste. C Oroville, CA 95966  
Office: (530) 534-9910 Fax: (530) 534-9915  
E-Mail: [sales@tiledspas.com](mailto:sales@tiledspas.com) Web Site: [www.tiledspas.com](http://www.tiledspas.com)



SIZE <b>A</b>	DWG NAME <b>RESIDENTIAL SPA DETAILS</b>	DWG TYPE <b>Layout (8)</b>
SCALE <b>3/8" = 1'</b>	DATE <b>1/13/2009</b>	SHEET <b>PAGE 1 OF 1</b>



**SKID SUPPORT  
STRUCTURE\* BONDED  
TO SPA**



\*SKIDS SUPPLIED  
BY NESPA

**(A) LIGHT NICHE**



SPA BRIGHT, 120 V,  
100 WATT, 50' CORD,  
U.L. APPROVED

**(D) SKIMMER**



FRONT ACCESS  
SKIMMER, NSF  
APPROVED

**(F) JET**

HYDRO INLETS  
1-1/2" WATER - 1-1/2" AIR  
HYDROAIR #10-5100  
COMPLIES W/ ANSI CODE ASME A112.19.8-07  
UL APPROVED

**(G) RETURN**

INLET FITTINGS  
1-1/2" WALL TYPE W/ EYEBALL  
HYDROAIR #10-3500  
COMPLIES W/ ANSI CODE ASME A112.19.8-07  
UL APPROVED

**(H) FILL**

INLET FITTINGS  
1-1/2" WALL TYPE W/ EYEBALL  
HYDROAIR #10-3500  
COMPLIES W/ ANSI CODE ASME A112.19.8-07  
UL APPROVED

**(M) MAIN DRAIN**



AquaStar 32CDFLFR, 32" Channel Drain,  
Approved Max Flow Rate: Floor = 236 GPM  
@ 3.4 fps Wall = 136 GPM @ 1.9 fps  
V.G.B Approved Safety Drain

**(N) HEATER**



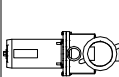
NATURAL GAS HEATER  
PENTAIR / PAC FAB #460531  
W/ POWER ASSISTED  
VENTILATION,  
400,000 BTU

**(O) FILTER**



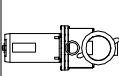
CARTRIDGE FILTER  
PENTAIR/PAC FAB - CC200  
200 SQ. FT. CLEAN &  
CLEAR SERIES

**(P) SELF-PRIMING  
PUMP AND MOTOR**

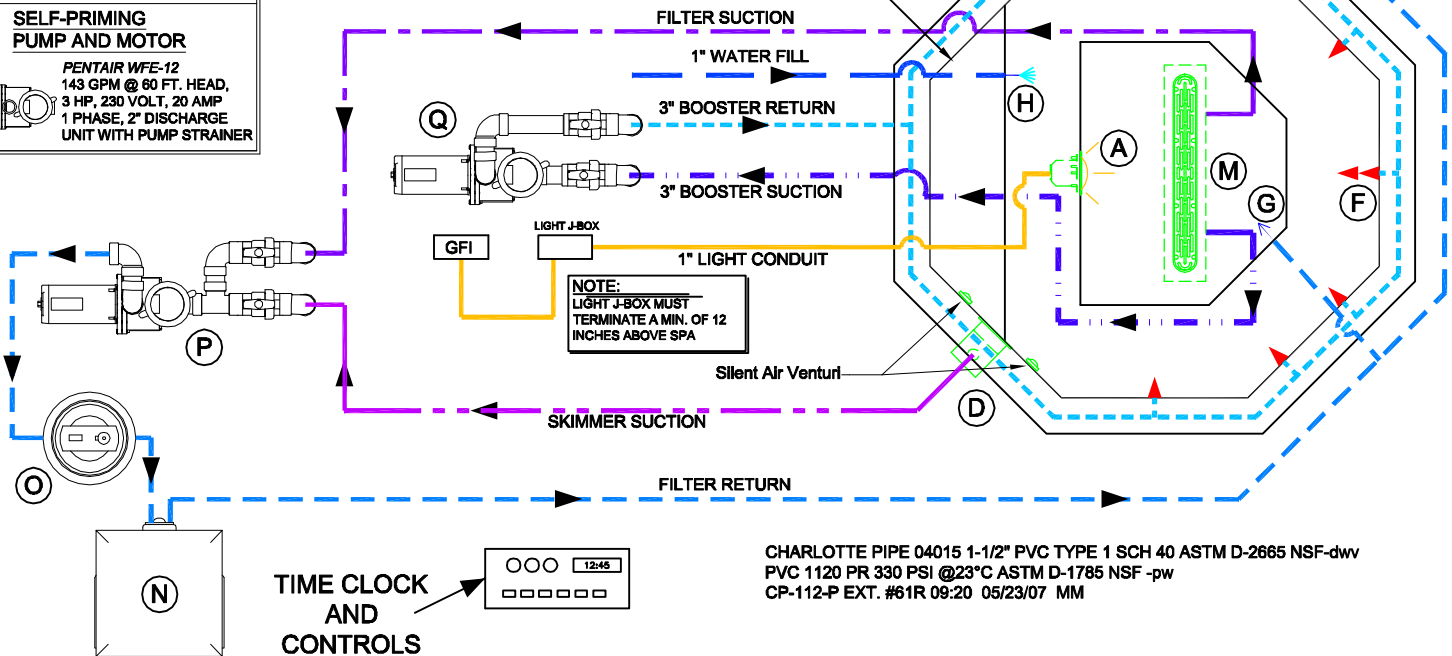
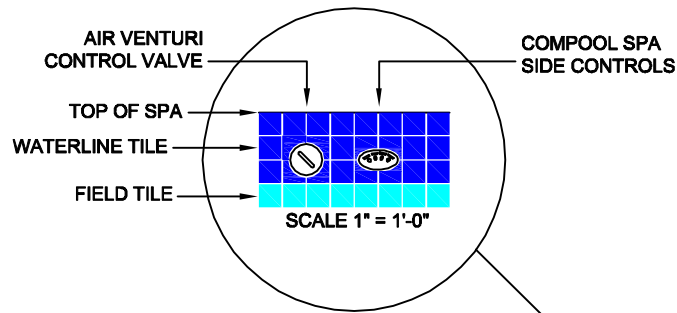


PENTAIR WFE-6  
99 GPM @ 60 FT. HEAD,  
1 1/2 HP, 230 VOLT, 20 AMP  
1 PHASE, 2" DISCHARGE  
UNIT WITH PUMP STRAINER

**(Q) SELF-PRIMING  
PUMP AND MOTOR**



PENTAIR WFE-12  
143 GPM @ 60 FT. HEAD,  
3 HP, 230 VOLT, 20 AMP  
1 PHASE, 2" DISCHARGE  
UNIT WITH PUMP STRAINER



CHARLOTTE PIPE 04015 1-1/2" PVC TYPE 1 SCH 40 ASTM D-2665 NSF-dww  
PVC 1120 PR 330 PSI @23°C ASTM D-1785 NSF -pw  
CP-112-P EXT. #61R 09:20 05/23/07 MM

\*ALL DIMENSIONS SUBJECT TO 1/4" TOLERANCES\*

Jan 13, 2009 - 11:58am

These drawings, concepts, and details contained herein are the original proprietary designs of NESPA ENTERPRISES, developed over many years of experience in the pool and spa industry and as such are protected by the copyright laws of the United States Government. Reproduction of any of the above without written permission to do so by NESPA ENTERPRISES, is illegal.

**NESPA ENTERPRISES INC.**

2800 Richter Ave. Ste. C Oroville, CA 95966

Office: (530) 534-9910

Fax: (530) 534-9915

E-Mail: [sales@tiledspas.com](mailto:sales@tiledspas.com) Web Site: [www.tiledspas.com](http://www.tiledspas.com)



SIZE  
A

DWG NAME

RESIDENTIAL SPA DETAILS

DWG TYPE

Layout (9)

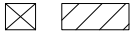
SCALE 3/8" = 1'

DATE 1/13/2009

SHEET

PAGE 1 OF 1

**SKID SUPPORT  
STRUCTURE\* BONDED  
TO SPA**



\*SKIDS SUPPLIED  
BY NESPA

**(A) LIGHT NICHE**



SPA BRIGHT, 120 V,  
100 WATT, 50' CORD,  
U.L. APPROVED

**(D) SKIMMER**



FRONT ACCESS  
SKIMMER, NSF  
APPROVED

**(F) JET**

HYDRO INLETS  
1-1/2" WATER - 1-1/2" AIR  
HYDROAIR #10-5100  
COMPLIES W/ ANSI CODE ASME A112.19.8-07  
UL APPROVED

**(G) RETURN**

INLET FITTINGS  
1-1/2" WALL TYPE W/ EYEBALL  
HYDROAIR #10-3500  
COMPLIES W/ ANSI CODE ASME A112.19.8-07  
UL APPROVED

**(H) FILL**

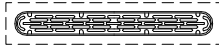
INLET FITTINGS  
1-1/2" WALL TYPE W/ EYEBALL  
HYDROAIR #10-3500  
COMPLIES W/ ANSI CODE ASME A112.19.8-07  
UL APPROVED

**(L) SIDEWALL SUCTION**



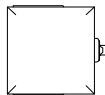
Paramount SDX 10"  
HIGH FLOW SAFETY DRAIN  
Area of Opening = 43.201 In/sq  
Velocity @ 200 GPM = 1.485 fps  
V.G.B Approved Safety Drain

**(M) MAIN DRAIN**



AquaStar 32CDLFR, 32" Channel Drain,  
Approved Max Flow Rate: Floor = 236 GPM  
@ 3.4 fps Wall = 136 GPM @ 1.9 fps  
V.G.B Approved Safety Drain

**(N) HEATER**



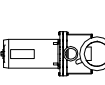
NATURAL GAS HEATER  
PENTAIR / PAC FAB #460531  
W/ POWER ASSISTED  
VENTILATION,  
400,000 BTU

**(O) FILTER**



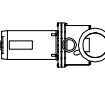
CARTRIDGE FILTER  
PENTAIR/PAC FAB - CC200  
200 SQ. FT. CLEAN &  
CLEAR SERIES

**(P) SELF-PRIMING  
PUMP AND MOTOR**

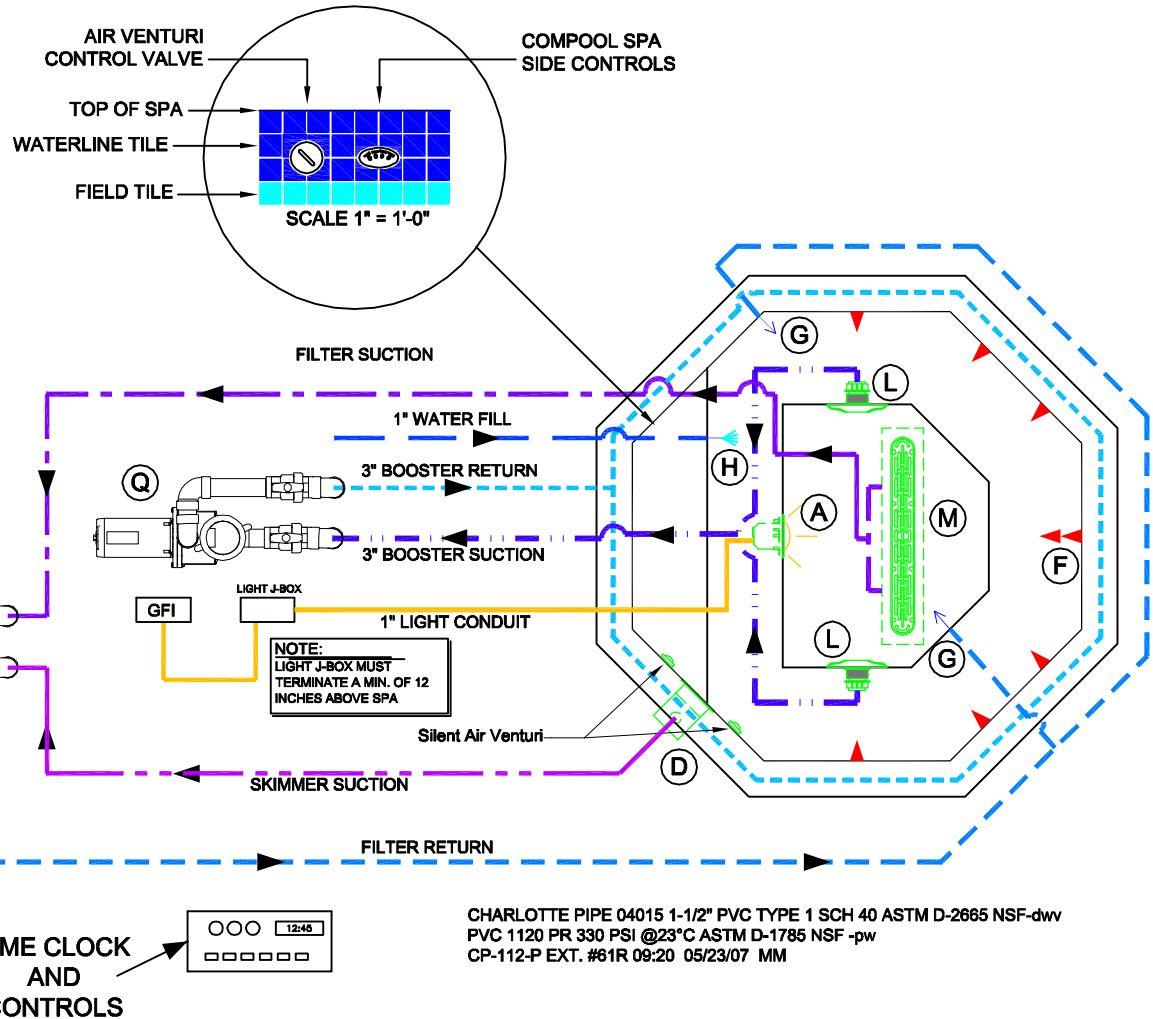


PENTAIR WFE-6  
99 GPM @ 60 FT. HEAD,  
1 1/2 HP, 230 VOLT, 20 AMP  
1 PHASE, 2" DISCHARGE  
UNIT WITH PUMP STRAINER

**(Q) SELF-PRIMING  
PUMP AND MOTOR**



PENTAIR WFE-12  
143 GPM @ 60 FT. HEAD,  
3 HP, 230 VOLT, 20 AMP  
1 PHASE, 2" DISCHARGE  
UNIT WITH PUMP STRAINER



\*ALL DIMENSIONS SUBJECT TO 1/4" TOLERANCES\*

These drawings, concepts, and details contained herein are the original proprietary designs of NESPA ENTERPRISES, developed over many years of experience in the pool and spa industry and as such are protected by the copyright laws of the United States Government. Reproduction of any of the above without written permission to do so by NESPA ENTERPRISES, is illegal.

**NESPA ENTERPRISES INC.**  
2800 Richter Ave. Ste. C Oroville, CA 95966  
Office: (530) 534-9910 Fax: (530) 534-9915  
E-Mail: [sales@tiledspas.com](mailto:sales@tiledspas.com) Web Site: [www.tiledspas.com](http://www.tiledspas.com)

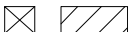


SIZE A  
DWG NAME RESIDENTIAL SPA DETAILS  
SCALE 3/8" = 1'  
DATE 1/13/2009

DWG TYPE Layout (10)  
SHEET PAGE 1 OF 1

Jan 13, 2009 - 11:58am

**SKID SUPPORT  
STRUCTURE\* BONDED  
TO SPA**



\*SKIDS SUPPLIED  
BY NESPA

**(A) LIGHT NICHE**



SPA BRIGHT, 120 V,  
100 WATT, 50' CORD,  
U.L. APPROVED

**(D) SKIMMER**



FRONT ACCESS  
SKIMMER, NSF  
APPROVED

**(F) JET**

HYDRO INLETS  
1-1/2" WATER - 1-1/2" AIR  
HYDROAIR #10-5100  
COMPLIES W/ ANSI CODE ASME A112.19.8-07  
UL APPROVED

**(G) RETURN**

INLET FITTINGS  
1-1/2" WALL TYPE W/ EYEBALL  
HYDROAIR #10-3500  
COMPLIES W/ ANSI CODE ASME A112.19.8-07  
UL APPROVED

**(H) FILL**

INLET FITTINGS  
1-1/2" WALL TYPE W/ EYEBALL  
HYDROAIR #10-3500  
COMPLIES W/ ANSI CODE ASME A112.19.8-07  
UL APPROVED

**(L) SIDEWALL SUCTION**



Paramount SDX 10"  
HIGH FLOW SAFETY DRAIN  
Area of Opening = 43.201 In/sq  
Velocity @ 200 GPM = 1.485 fps  
V.G.B Approved Safety Drain

**(M) MAIN DRAIN**



AquaStar 8AV, 8" Dia Frame,  
Approved Max Flow Rate:  
Floor = 88 GPM @ 3.2 fps  
Wall = 70 GPM @ 2.6 fps  
8.8 Sq In - Open Area  
V.G.B Approved Safety Drain

**(N) HEATER**



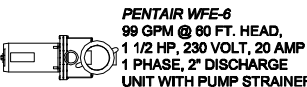
NATURAL GAS HEATER  
PENTAIR / PAC FAB #460531  
W/ POWER ASSISTED  
VENTILATION,  
400,000 BTU

**(O) FILTER**



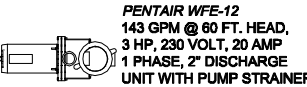
CARTRIDGE FILTER  
PENTAIR/PAC FAB - CC200  
200 SQ. FT. CLEAN &  
CLEAR SERIES

**(P) SELF-PRIMING  
PUMP AND MOTOR**

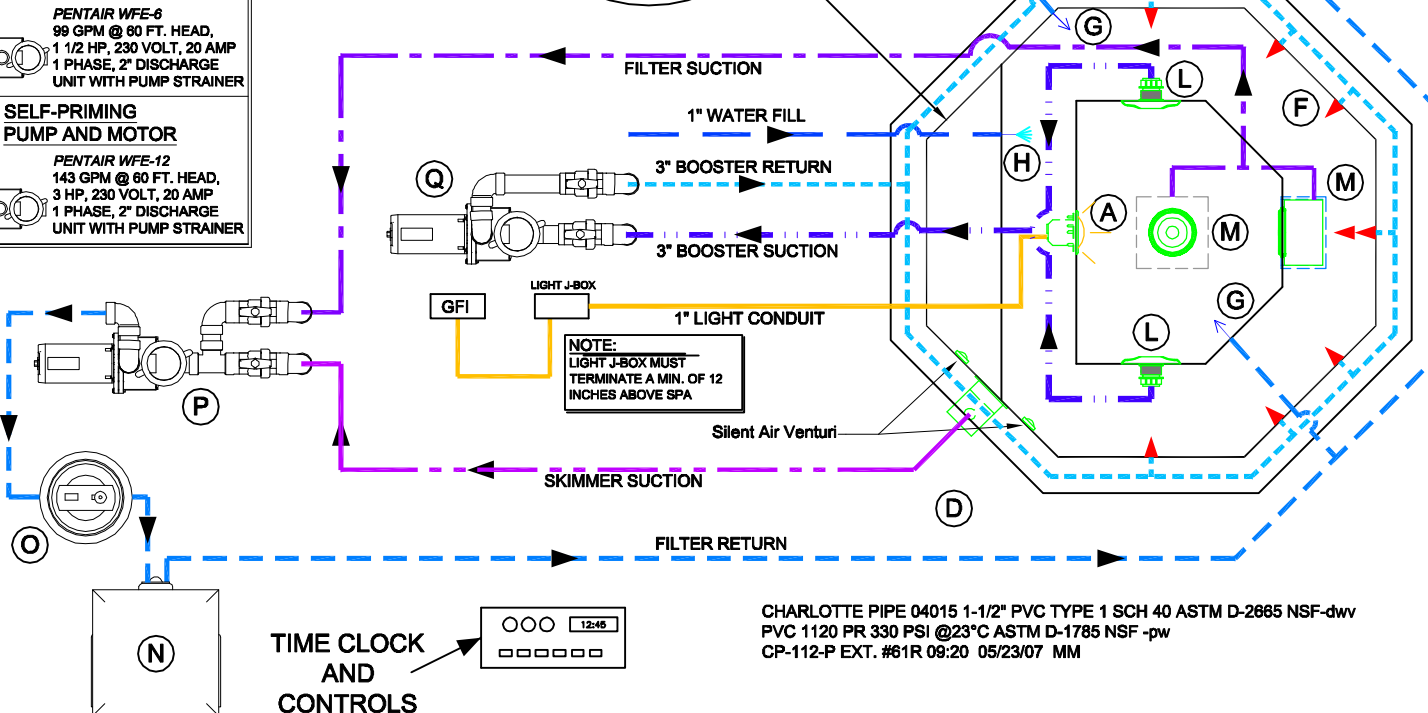
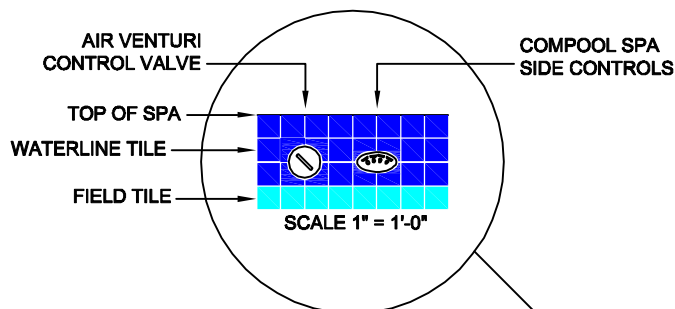


PENTAIR WFE-6  
99 GPM @ 60 FT. HEAD,  
1 1/2 HP, 230 VOLT, 20 AMP  
1 PHASE, 2" DISCHARGE  
UNIT WITH PUMP STRAINER

**(Q) SELF-PRIMING  
PUMP AND MOTOR**



PENTAIR WFE-12  
143 GPM @ 60 FT. HEAD,  
3 HP, 230 VOLT, 20 AMP  
1 PHASE, 2" DISCHARGE  
UNIT WITH PUMP STRAINER



**NOTE:**  
LIGHT J-BOX MUST  
TERMINATE A MIN. OF 12  
INCHES ABOVE SPA

CHARLOTTE PIPE 04015 1-1/2" PVC TYPE 1 SCH 40 ASTM D-2685 NSF-dwv  
PVC 1120 PR 330 PSI @23°C ASTM D-1785 NSF -pw  
CP-112-P EXT. #81R 09:20 05/23/07 MM

\*ALL DIMENSIONS SUBJECT TO 1/4" TOLERANCES\*

Jan 13, 2009 - 11:58am

These drawings, concepts, and details contained herein are the original proprietary designs of NESPA ENTERPRISES, developed over many years of experience in the pool and spa industry and as such are protected by the copyright laws of the United States Government. Reproduction of any of the above without written permission to do so by NESPA ENTERPRISES, is illegal.

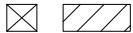
**NESPA ENTERPRISES INC.**  
2800 Richter Ave. Ste. C Oroville, CA 95966  
Office: (530) 534-9910 Fax: (530) 534-9915  
E-Mail: [sales@tiledspas.com](mailto:sales@tiledspas.com) Web Site: [www.tiledspas.com](http://www.tiledspas.com)



SIZE <b>A</b>	DWG NAME <b>RESIDENTIAL SPA DETAILS</b>
SCALE <b>3/8" = 1'</b>	DATE <b>1/13/2009</b>

DWG TYPE <b>Layout (11)</b>
SHEET <b>PAGE 1 OF 1</b>

**SKID SUPPORT STRUCTURE\* BONDED TO SPA**



\*SKIDS SUPPLIED BY NESPA

**(A) LIGHT NICHE**



SPA BRIGHT, 120 V, 100 WATT, 50' CORD, U.L. APPROVED

**(D) SKIMMER**



FRONT ACCESS SKIMMER, NSF APPROVED

**(F) JET**



HYDRO INLETS  
1-1/2" WATER - 1-1/2" AIR  
HYDROAIR #10-5100  
COMPLIES W/ ANSI CODE ASME A112.19.8-07  
UL APPROVED

**(G) RETURN**



INLET FITTINGS  
1-1/2" WALL TYPE W/ EYEBALL  
HYDROAIR #10-3500  
COMPLIES W/ ANSI CODE ASME A112.19.8-07  
UL APPROVED

**(H) FILL**



INLET FITTINGS  
1-1/2" WALL TYPE W/ EYEBALL  
HYDROAIR #10-3500  
COMPLIES W/ ANSI CODE ASME A112.19.8-07  
UL APPROVED

**(M) MAIN DRAIN**



AgueStar 32CDFLFR, 32" Channel Drain,  
Approved Max Flow Rate: Floor = 236 GPM  
@ 3.4 fps Wall = 136 GPM @ 1.9 fps  
V.G.B Approved Safety Drain

**(N) HEATER**



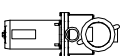
NATURAL GAS HEATER  
PENTAIR / PAC FAB #460631  
W/ POWER ASSISTED VENTILATION,  
400,000 BTU

**(O) FILTER**

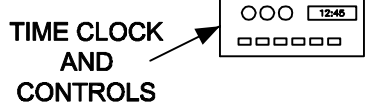
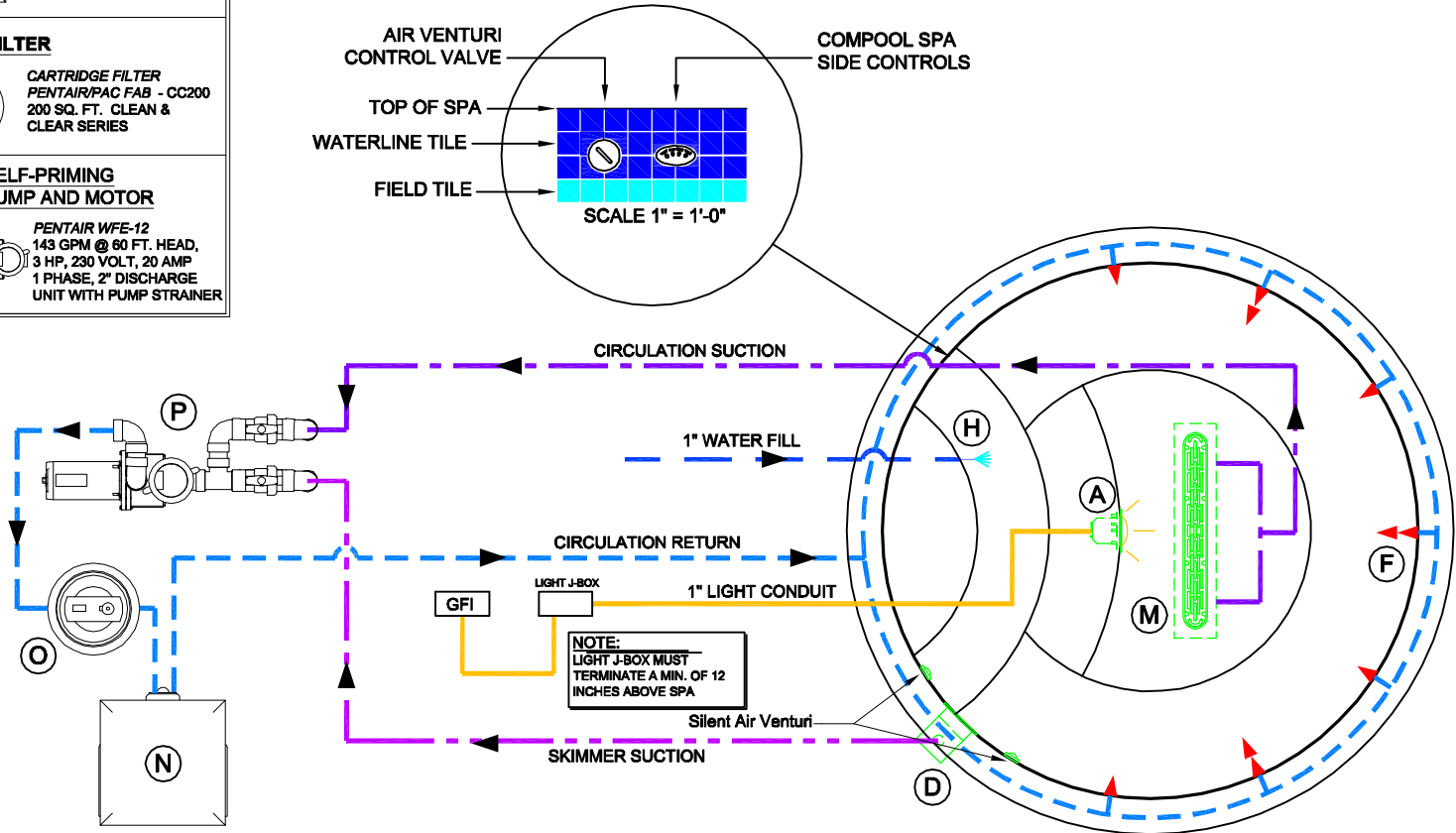


CARTRIDGE FILTER  
PENTAIR/PAC FAB - CC200  
200 SQ. FT. CLEAN & CLEAR SERIES

**(P) SELF-PRIMING PUMP AND MOTOR**



PENTAIR WFE-12  
143 GPM @ 60 FT. HEAD,  
3 HP, 230 VOLT, 20 AMP  
1 PHASE, 2" DISCHARGE  
UNIT WITH PUMP STRAINER



CHARLOTTE PIPE 04015 1-1/2" PVC TYPE 1 SCH 40 ASTM D-2665 NSF-dww  
PVC 1120 PR 330 PSI @23°C ASTM D-1785 NSF -pw  
CP-112-P EXT. #81R 09:20 05/23/07 MM

\*ALL DIMENSIONS SUBJECT TO 1/4" TOLERANCES\*

Jan 13, 2009 - 11:58am

These drawings, concepts, and details contained herein are the original proprietary designs of NESPA ENTERPRISES, developed over many years of experience in the pool and spa industry and as such are protected by the copyright laws of the United States Government. Reproduction of any of the above without written permission to do so by NESPA ENTERPRISES, is illegal.

**NESPA ENTERPRISES INC.**  
2800 Richter Ave. Ste. C Oroville, CA 95966  
Office: (530) 534-9910 Fax: (530) 534-9915  
E-Mail: [sales@tiledspas.com](mailto:sales@tiledspas.com) Web Site: [www.tiledspas.com](http://www.tiledspas.com)



SIZE **A** DWG NAME **RESIDENTIAL SPA DETAILS**  
SCALE **3/8" = 1'** DATE **1/13/2009**

DWG TYPE **Layout (12)**  
SHEET **PAGE 1 OF 1**