

PACIFIC POOL & SPA Production Booklet

for

Steven Harris SPA

RECOMMENDED MAINTENANCE

Please Note:

These are only recommended guidelines to care for a Pacific Pool and Spa. Local codes may require additional procedures, therefore consult with a pool professional that is LA county Health Department certified for more information on local codes and requirements.

SPA SURFACE

Your spa tile is acid resistant and frost-proof. The Tile does not absorb germs or algae. Tile does not stain and is very easy to clean. Color does not fade or lose its luster. All grouts are epoxy based and are extremely durable. To remove scum line use soft nylon brush and small amounts of biodegradable soaps. Do not use abrasive brushes or chemicals.

MAINTENANCE

A. CHEMICALS:

- 1) It is important to maintain a chlorine residual of 2 PPM in the spa. That residual can be provided by chlorine or bromine.
- 2) It is recommended to use Bromine or dichlor (granular) forms of chlorine. If bromine Tabs are used we suggest floating or inline dispenser.
- 3) Never use acid to lower Ph in the tile spa.
- 4) Never use trichlor chlorine (1" or 3") tablets in the Pacific Pool and Spas.
- 5) Never place tablets in skimmer basket.

B. DRAINING THE SPA:

- 1) It is recommended to drain the spa at least once every 2 months depending on bath load and water clarity.
- 2) The spa should be drained through valve exiting re-circulation pump in the spa equipment room or sump pump.
- 3) Note: Use caution to drain spa in the winter months or rainy season when water table is at its highest. It is possible for the spa to float due to hydraulic pressure from surrounding water table. We advise that you consult with your local spa specialist prior to draining the spa.

C. SPA EQUIPMENT:

- 1) Clean filter cartridge at least once every month, or when needed; i.e., if water clarity does not improve after several days.
- 2) Keep area free and clear from leaves and debris build-up.
- 3) Keep area free and clear from flooding.

D. SPA LIGHT:

- 1) Spa light has to be on GFCI circuit. It is controlled at spa side with ON/OFF.

E. TILE SERVICING:

- 1) Contact manufacture when servicing tile or grout. @ (845) 753-2100

PLAN APPROVAL DOCUMENTATION

DRAWING REVISION HISTORY

SHEET 1 - SD (Spa Detail)

REV NOTE: Changed dimensions (clouded) to accomodate tile size.

SHEET 2 - SPA Layout

REV NOTE:

SHEET 3 - Cover Box

REV NOTE:

SHEET 4 - Plumbing

REV NOTE:

SHEET 5&6 - EQ Layout

REV NOTE:

SHEET 7 - Tile Layout

REV NOTE:

I approve the above drawings _____ Date: _____

Any changes to these plans from here forward shall be directed in writing to Pacific Pool & Spa.

SPA FABRICATION AUTHORIZATION

Pacific Pool & Spa engineering and structural manufacturing departments may find it necessary to make slight adjustments (= 1") to your spa. This may include the size of the spa (OD/ID), tile cuts, depths, jet location, bench steps etc. These adjustments must be made in the primary stages of building the spa. The adjustments are generally made to ad structural and aesthetic integrity to the vessel. IE: balance of supporting gussets (exterior) and less tile cuts/ symmetrical cuts, grout lines, etc. (interior)


Please initial next to the following number that describes your project needs .

- _____ 1. YES, I understand adjustments need to be made. Pacific Pool & Spa will use their expertise to make these adjustments as needed. I give them the authority to make changes. I will receive final accurate drawings prior to receipt of spa or spa hole construction (if changes were made to the size)
- _____ 2. NO, No changes can be made even under 1". Dimensions are fixed. More tile cuts may be needed, Structural supports may be altered to accommodate.
- _____ 3. Pacific Pool & Spa will need to contact us for any changes to spa dimensions prior to continued spa fabrication.

All drawing dimensions supplied by [PACIFIC POOL & SPA](#) are for reference only. All CAD files were created using AutoCAD file (*.dwg.) and were provided as a service to our customers using AutoCAD. Errors sometimes occur during this process and with software incompatibility upon opening a file. [PACIFIC POOL & SPA](#) and/or any authorized distributor of our products will not be held responsible for problems arising from files which have been converted and does not warranty the documents against deficiencies or typographical errors of any kind. We recommend that all measurements are verified with actual physical product before any custom fabrication in the field occurs.

APPROVED

7/11/2012 11:30:51 AM

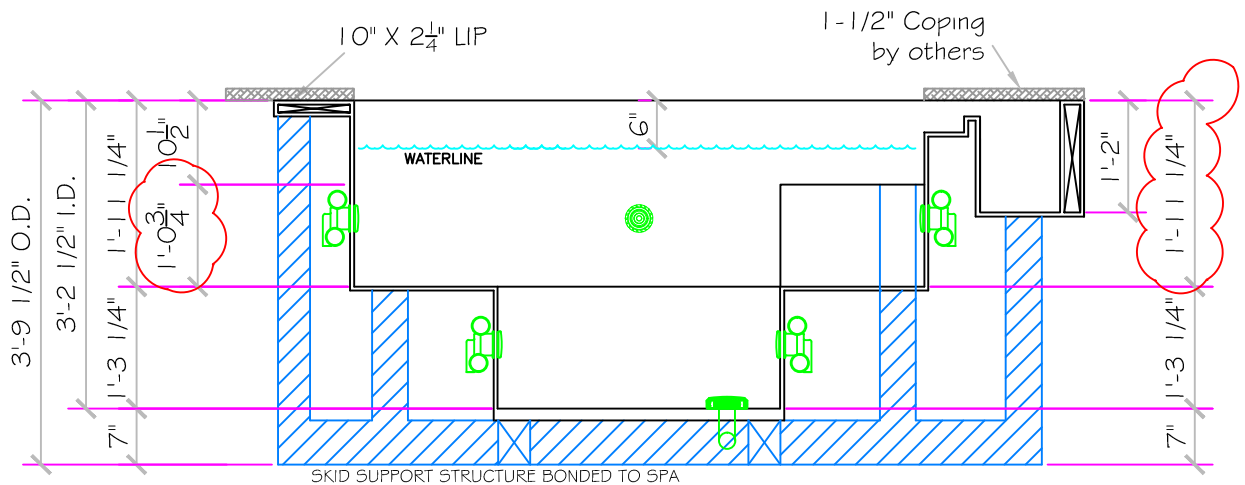
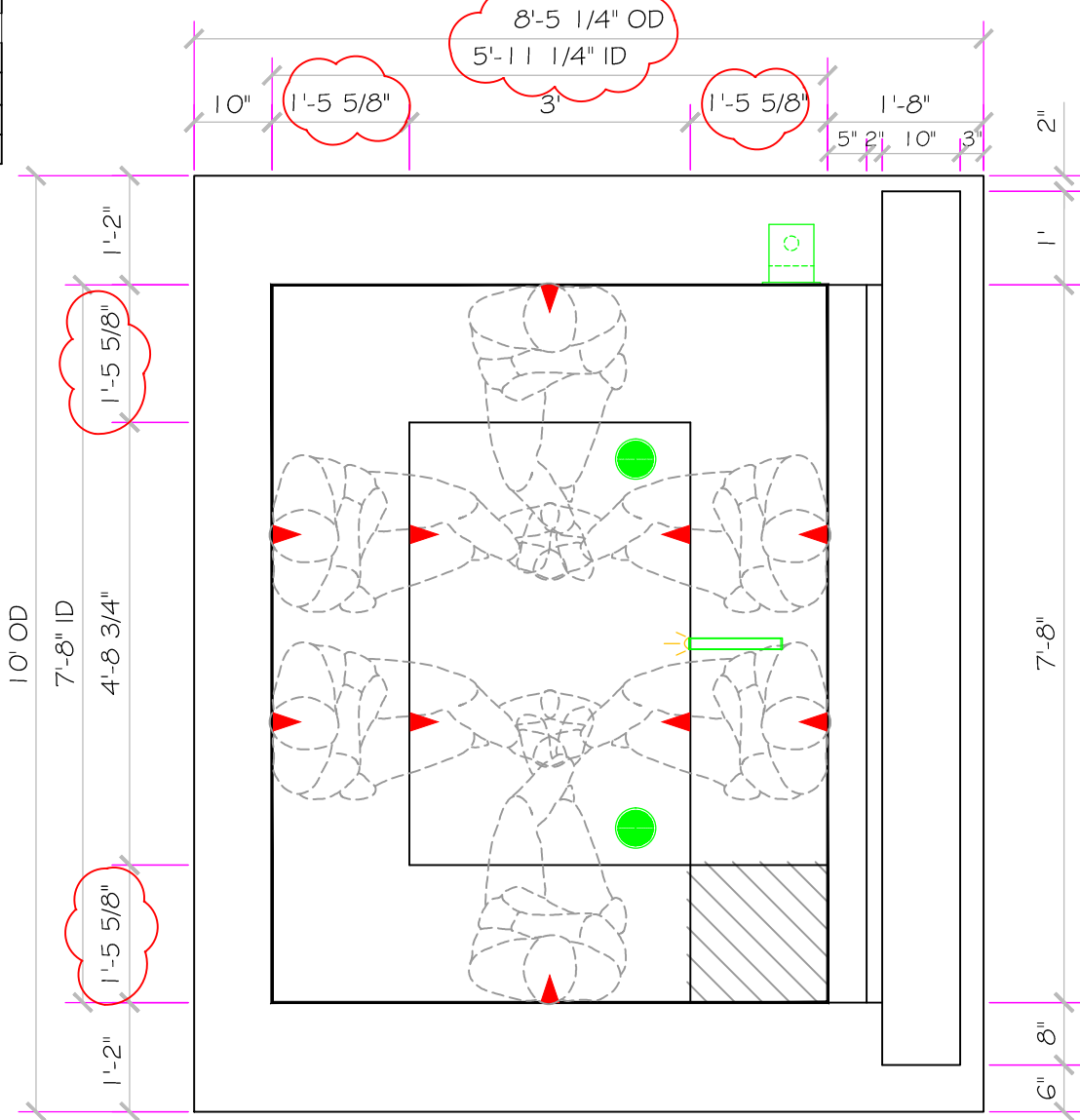
PACIFIC POOL & SPA 110 Orange Turnpike Sloatsburg, NY 10974 Office Phone: (845) 753-2100 Web Site: www.pacificpoolandspa.com	If printing as a PDF:	SCALE N/A		DWG TYPE REV
	Page Scaling: <input type="checkbox"/> None <input checked="" type="checkbox"/>	DWG NAME STEVEN HARRIS SPA JOB	DATE 6/21/2012	SHEET Cover Sheet

These drawings, concepts, and details contained herein are the original proprietary designs of [PACIFIC POOL & SPA](#), developed over many years of experience in the industry and as such are protected by the copyright laws of the United States Government. Reproduction of any of the above without written permission to do so by [PACIFIC POOL & SPA](#), is illegal.

SPECIFICATIONS	
SHELL WEIGHT:	3000 LBS.
WATER WEIGHT:	4434 LBS.
TOTAL SHELL & WATER WEIGHT:	7433.9 LBS.
WATER VOLUME:	90 Cu.Ft.
MAX WATER GAL:	673 GAL.
SURFACE AREA:	45.5 SQ. FT.
IAPMO#:	1138
FDA#:	2030305

I approve the above drawings X _____ Date: _____

Any changes to these plans from here forward shall be directed in writing to Pacific Pool & Spa.



APPROVED

All drawing dimensions supplied by **PACIFIC POOL & SPA** are for reference only. All CAD files were created using AutoCAD file (*.dwg.) and were provided as a service to our customers using AutoCAD. Errors sometimes occur during this process and with software incompatibility upon opening a file. **PACIFIC POOL & SPA** and/or any authorized distributor of our products will not be held responsible for problems arising from files which have been converted and does not warranty the documents against deficiencies or typographical errors of any kind. We recommend that all measurements are verified with actual physical product. **PACIFIC POOL & SPA** is not responsible for any errors.

PACIFIC POOL & SPA

110 Orange Turnpike Sloatsburg, NY 10974

Office Phone: (845) 753-2100

Web Site: www.pacificpoolandspa.com

If printing as a PDF:

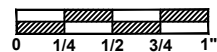
Page Scaling: None

DWG NAME

STEVEN HARRIS SPA JOB

SCALE

1/2" = 1'



DWG TYPE

SD

DATE

6/21/2012

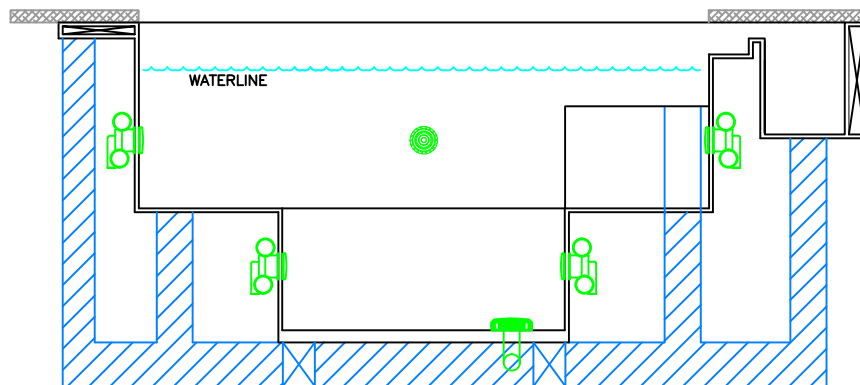
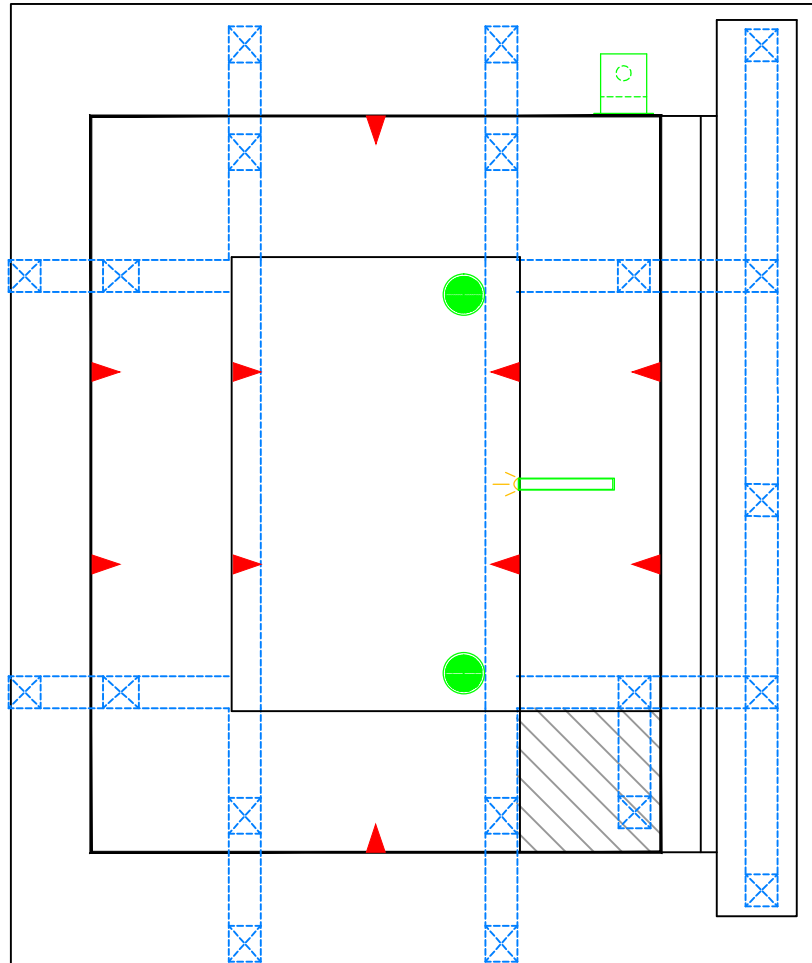
SHEET

PAGE 1 OF 7

These drawings, concepts, and details contained herein are the original proprietary designs of **PACIFIC POOL & SPA**, developed over many years of experience in the industry and as such are protected by the copyright laws of the United States Government. Reproduction of any of the above without written permission to do so by **PACIFIC POOL & SPA**, is illegal.

I approve the above drawings X _____ Date: _____

Any changes to these plans from here forward shall be directed in writing to Pacific Pool & Spa.



SKID SUPPORT STRUCTURE BONDED TO SPA

APPROVED

All drawing dimensions supplied by **PACIFIC POOL & SPA** are for reference only. All CAD files were created using AutoCAD file (*.dwg.) and were provided as a service to our customers using AutoCAD. Errors sometimes occur during this process and with software incompatibility upon opening a file. **PACIFIC POOL & SPA** and/or any authorized distributor of our products will not be held responsible for problems arising from files which have been converted and does not warranty the documents against deficiencies or typographical errors of any kind. We recommend that all measurements are verified with actual physical product before any custom fabrication in the field occurs.

7/11/2012 11:30:52 AM

PACIFIC POOL & SPA

110 Orange Turnpike Sloatsburg, NY 10974

Office Phone: (845) 753-2100

Web Site: www.pacificpoolandspa.com

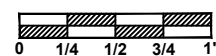
If printing as a PDF:

Page Scaling:

DWG NAME

STEVEN HARRIS SPA JOB

SCALE
1/2" = 1'



DATE

6/21/2012

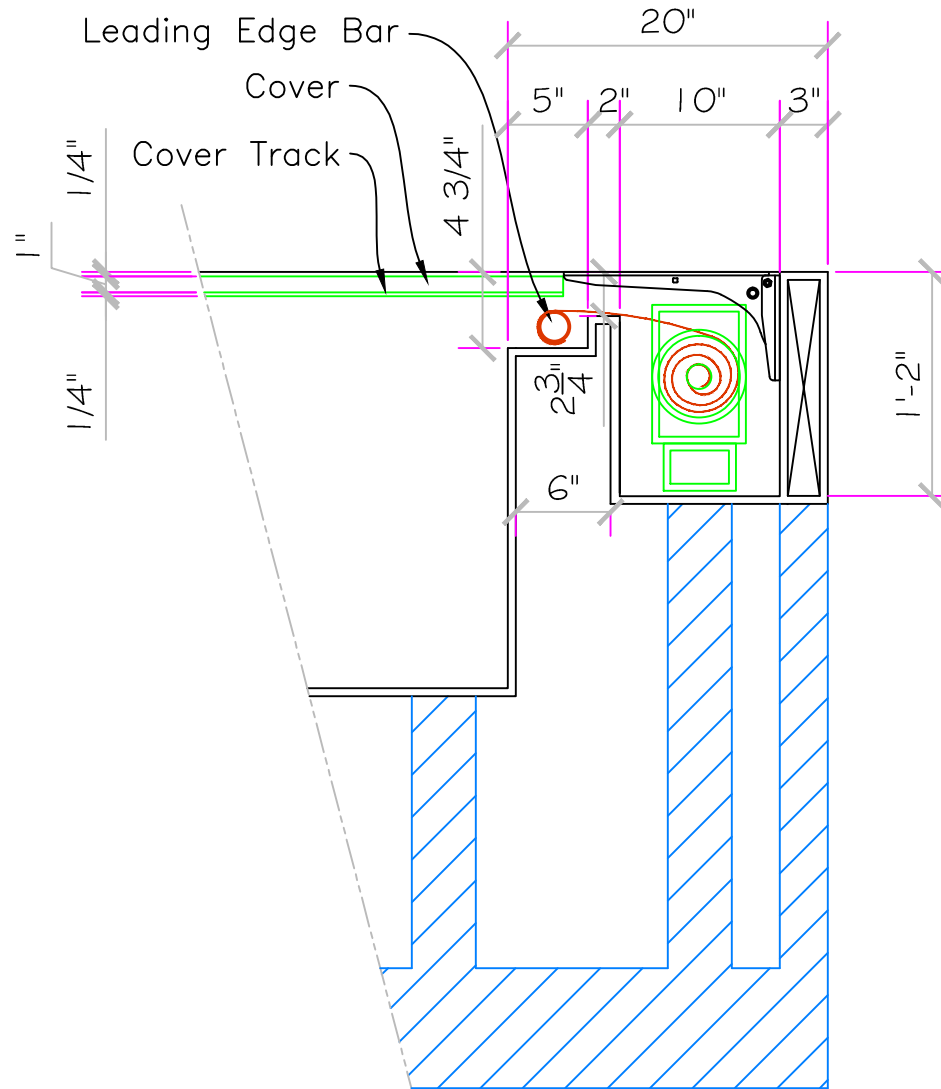
DWG TYPE

Layout

SHEET

PAGE 2 OF 7

These drawings, concepts, and details contained herein are the original proprietary designs of **PACIFIC POOL & SPA**, developed over many years of experience in the industry and as such are protected by the copyright laws of the United States Government. Reproduction of any of the above without written permission to do so by **PACIFIC POOL & SPA**, is illegal.



I approve the above drawings X _____ Date: _____

Any changes to these plans from here forward shall be directed in writing to Pacific Pool & Spa.

APPROVED

All drawing dimensions supplied by **PACIFIC POOL & SPA** are for reference only. All CAD files were created using AutoCAD file (*.dwg.) and were provided as a service to our customers using AutoCAD. Errors sometimes occur during this process and with software incompatibility upon opening a file. **PACIFIC POOL & SPA** and/or any authorized distributor of our products will not be held responsible for problems arising from files which have been converted and does not warranty the documents against deficiencies or typographical errors of any kind. All dimensions and measurements are verified with actual physical product before any custom fabrication in the field occurs.

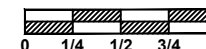
PACIFIC POOL & SPA

110 Orange Turnpike Sloatsburg, NY 10974

Office Phone: (845) 753-2100

Web Site: www.pacificpoolandspa.com

SCALE
1" = 1'



DWG TYPE

Cover Box

DWG NAME

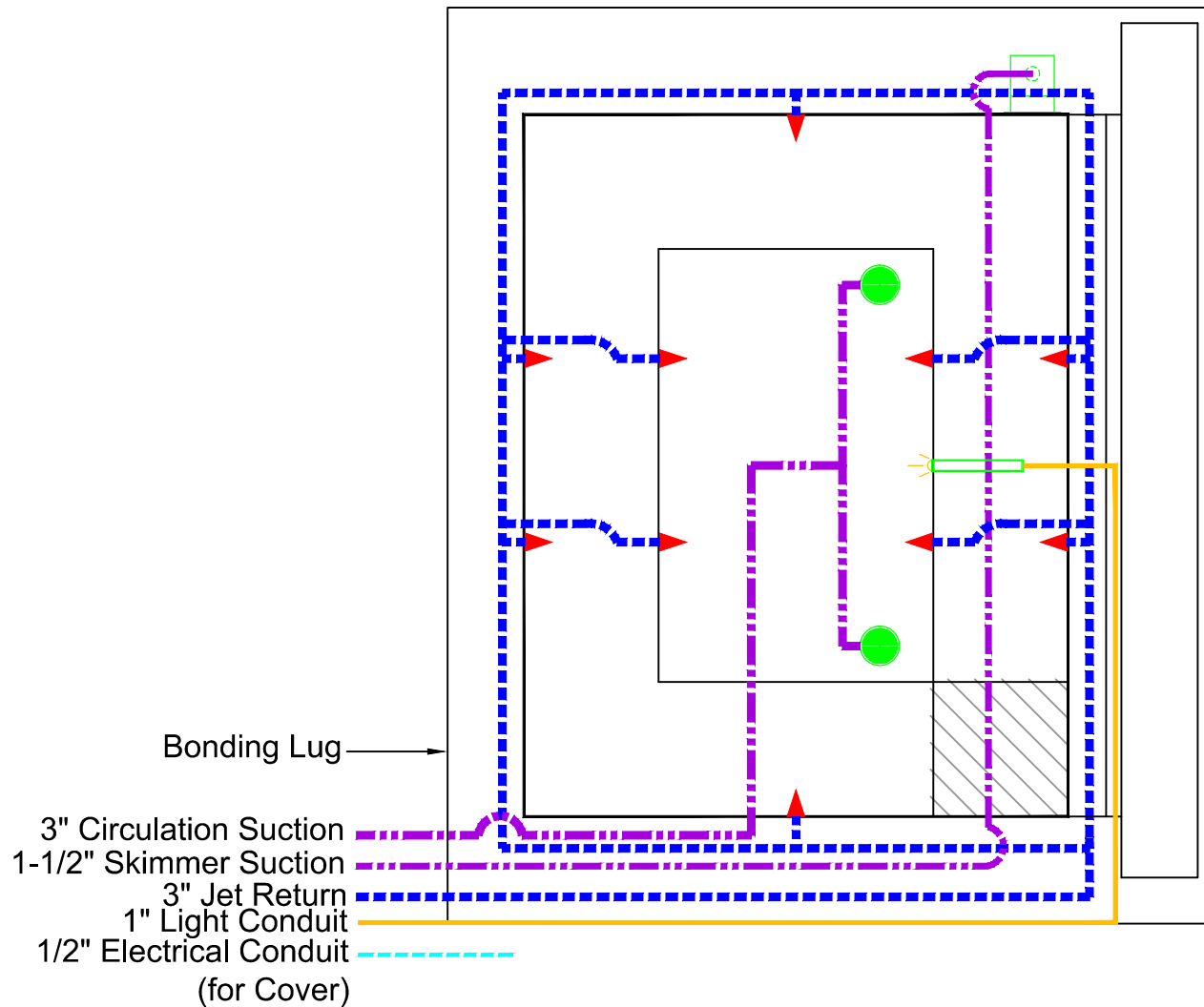
STEVEN HARRIS SPA JOB

DATE

6/21/2012

SHEET

PAGE 3 OF 7



APPROVED

All drawing dimensions supplied by [PACIFIC POOL & SPA](http://www.pacificpoolandspa.com) are for reference only. All CAD files were created using AutoCAD file (*.dwg.) and were provided as a service to our customers using AutoCAD. Errors sometimes occur during this process and with software incompatibility upon opening a file. [PACIFIC POOL & SPA](http://www.pacificpoolandspa.com) and/or any authorized distributor of our products will not be held responsible for problems arising from files which have been converted and does not warranty the documents against deficiencies or typographical errors of any kind. We recommend that all measurements are verified with actual physical product before any custom fabrication in the field occurs.

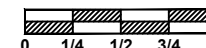
PACIFIC POOL & SPA

110 Orange Turnpike Sloatsburg, NY 10974

Office Phone: (845) 753-2100

Web Site: www.pacificpoolandspa.com

SCALE
1/2" = 1'



DWG TYPE
Plumbing

DWG NAME

STEVEN HARRIS SPA JOB

DATE

6/21/2012

SHEET
PAGE 4 OF 7



Jet Air Venturi
(run remote and
elevate above spa)

3" Jet Return

3" Suction

Nexus Light LED

Auto Cover Conduit

2" Cover Box Drain

Skimmer Suction

Pool Bond Lug
(connect to cover bonding)


PACIFIC POOL & SPA

110 Orange Turnpike Sloatsburg, NY 10974

Office Phone: (845) 753-2100

Web Site: www.pacificpoolandspa.com

SCALE

4 217/256" = 

DWG TYPE

Plumbing ID

DWG NAME

STEVEN HARRIS SPA JOB

DATE

7/13/2012

SHEET

PAGE 1 OF 1



PACIFIC POOL & SPA

110 Orange Turnpike Sloatsburg, NY 10974

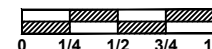
Office Phone: (845) 753-2100

Web Site: www.pacificpoolandspa.com

DWG NAME

STEVEN HARRIS SPA JOB

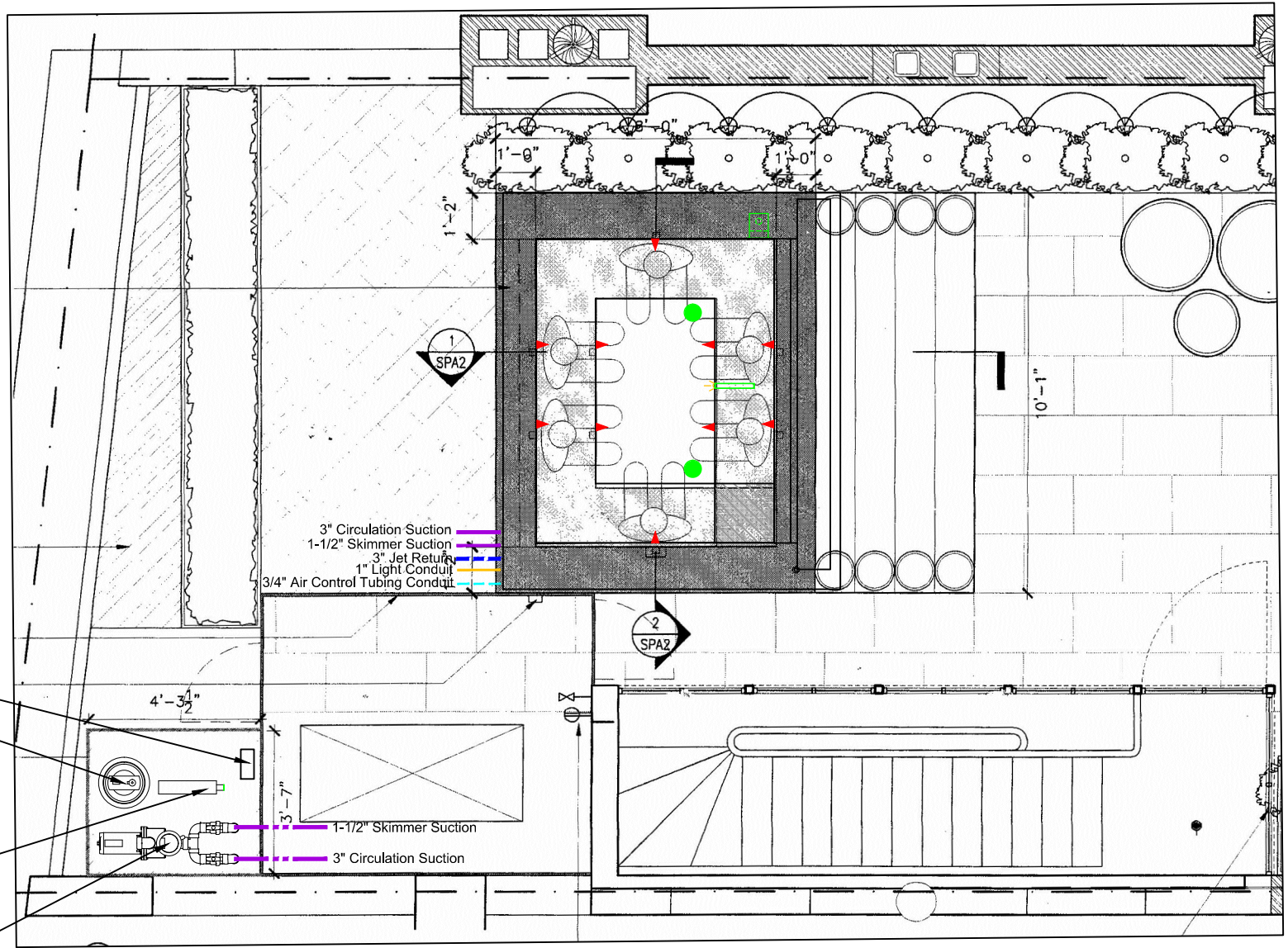
SCALE
N/A



DATE
7/13/2012

DWG TYPE
Equipment

SHEET
PAGE 1 OF 1



- Len Gordon 1094 LTC
- Sta-Rite PLM150 Mod Media Filter (*40" Vertical height needed for cleaning)
- Coates 11kw Heater
- Pentair Filter Pump

- 3" Circulation Suction
- 1-1/2" Skimmer Suction
- 3" Jet Return
- 1" Light Conduit
- 3/4" Air Control Tubing Conduit

I approve the above drawings X _____ Date: _____

Any changes to these plans from here forward shall be directed in writing to Pacific Pool & Spa.

APPROVED

All drawing dimensions supplied by **PACIFIC POOL & SPA** are for reference only. All CAD files were created using AutoCAD file (*.dwg.) and were provided as a service to our customers using AutoCAD. Errors sometimes occur during this process and with software incompatibility upon opening a file. **PACIFIC POOL & SPA** and/or any authorized distributor of our products will not be held responsible for problems arising from files which have been converted and does not warranty the documents against deficiencies or typographical errors of any kind. We recommend that all measurements are verified with actual physical product before any custom fabrication in the field occurs.

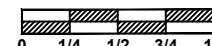
PACIFIC POOL & SPA

110 Orange Turnpike Sloatsburg, NY 10974

Office Phone: (845) 753-2100

Web Site: www.pacificpoolandspa.com

SCALE
1/4" = 1'



DWG NAME

STEVEN HARRIS SPA JOB

DATE

6/21/2012

DWG TYPE

Eq Layout

SHEET

PAGE 5 OF 7

System:2™ Mod Media™ Filters — PLM Series



- Top-mounted pressure gauge and normal operation are positioned for easy reading.
- Split tank design permits simple, thorough rinse-in-place cleaning to save time.
- Pos-Ring™ closure is safe, easy to secure, lasts for years.
- Balanced flow tank hydraulics direct water through each side of the filter module for uniform dirt loading to prevent clogging and maximize filtration effectiveness.



Easy to clean — just spray and go



The Mod Media™ filter contains a one-piece module that simply drops into an easily accessible tank. When cleaning is necessary, just remove the lid (no tools are necessary) and spray-rinse the module while it is still in place. It only takes minutes to thoroughly clean the filter and get back into service — fast.



Less maintenance... YES!

The balanced flow tank design directs water through both sides of the filter module which increases dirt-loading without clogging. Holding more dirt means a longer time between cleanings.

*Modules used in conjunction with certain pool/spa sanitizers may require soaking in special cleaning solutions.

System Performance

Model	For Pools up to (Gal) 8 Hr. Turnover	Filter Area (Sq. Ft.)	Optimal Flow Rate (GPM)
P-M100	48,000	100	50-75
P-M125	60,000	125	50-94
P-M150	72,000	150	50-113
P-M175	72,000	175	50-120
P-M200	72,000	200	50-120
P-M300	72,000	300	50-120

Operating at 113 GPM will provide the longest filter cycles combined with the best and greatest dirt-loading capacity. Larger filter area will provide longer filter cycles between cleanings.

Operating Limits — Maximum continuous operating pressure is 50 PSI. For Pool/Spa (hot tub) applications, the maximum operating water temperature within the filter is 104°F (40°C).

One-year limited warranty. See warranty for details.

Available from:



Simply Smarter.

www.staritepool.com
Phone: 800-831-7133 Fax: 800-284-4151

SPECIFICATIONS

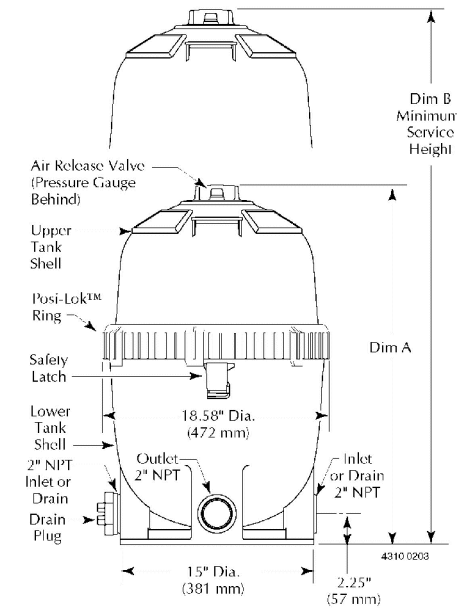


FIGURE 1A — Dimensions in inches (mm)

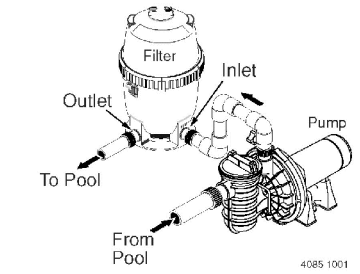


FIGURE 1B — Piping Connections

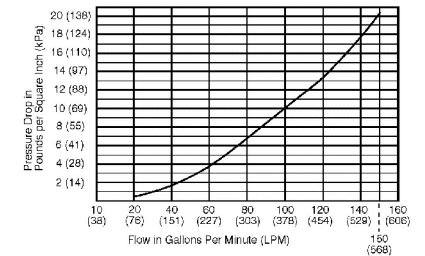


FIGURE 2 — Pressure Drop Curve

Table 1 - Filter Specifications

	Model No.					
	PLM100	PLM125	PLM150	PLM175	PLM200	PLM300
Filter Area sq. ft. (m ²)	100(9.3)	125(11.6)	150(14)	175(16.3)	200(18.6)	300(27.9)
Max. Rated Flow GPM (LPM)						
Commercial	37(140)	47(178)	56(212)	66(249)	75(284)	113(428)
Max. Operating Pressure PSI (kPa)	50(345)	50(345)	50(345)	50(345)	50(345)	50(345)
Max. Continuous Water Temperature (°F/°C)	104°(40°)	104°(40°)	104°(40°)	104°(40°)	104°(40°)	104°(40°)
Dimension A — Height (mm)	27-3/4(705)	27-3/4(705)	27-3/4(705)	27-3/4(705)	27-3/4(705)	37-5/8(956)
Dimension B — Minimum Service Height (mm)	38-1/2(978)	38-1/2(978)	38-1/2(978)	38-1/2(978)	38-1/2(978)	57(1,448)

APPROVED

7/11/2012 11:30:55 AM

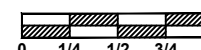
PACIFIC POOL & SPA

110 Orange Turnpike Sloatsburg, NY 10974

Office Phone: (845) 753-2100

Web Site: www.pacificpoolandspa.com

SCALE
7 17/32" = 1'



DWG NAME

STEVEN HARRIS SPA JOB

DATE

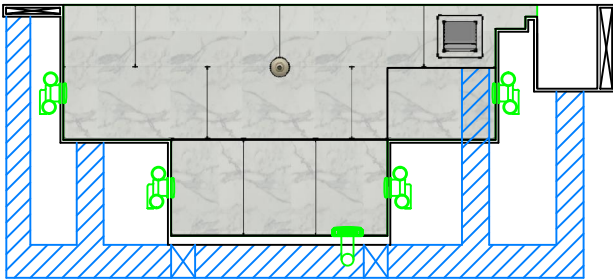
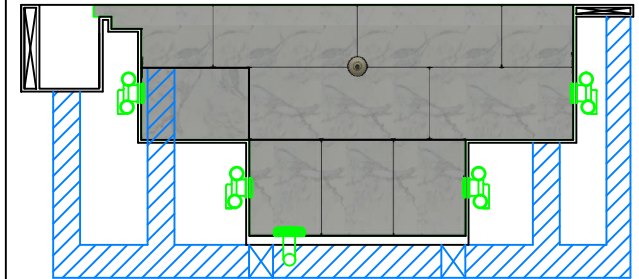
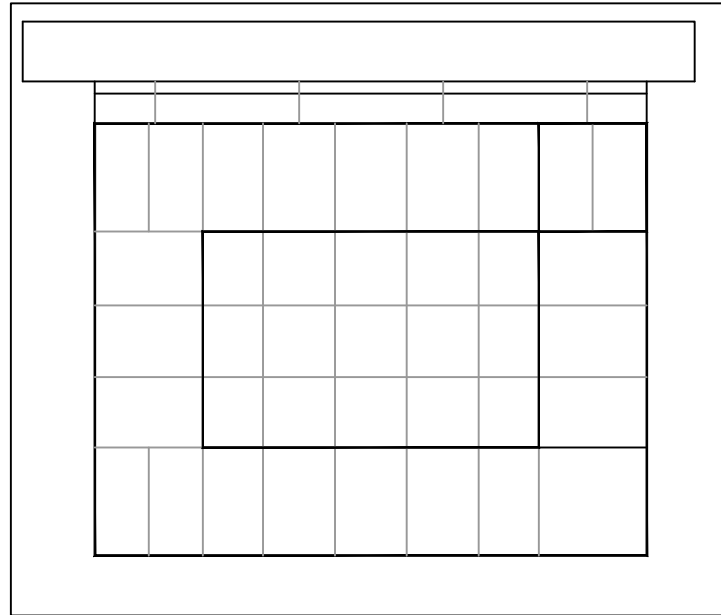
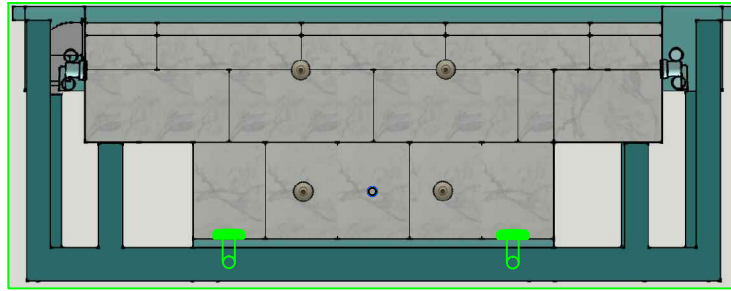
6/21/2012

DWG TYPE

Filter Info

SHEET

PAGE 6 OF 7



APPROVED

I approve the above drawings X _____ Date: _____

7/11/2012 11:30:56 AM

Any changes to these plans from here forward shall be directed in writing to Pacific Pool & Spa.

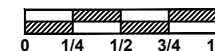
PACIFIC POOL & SPA

110 Orange Turnpike Sloatsburg, NY 10974

Office Phone: (845) 753-2100

Web Site: www.pacificpoolandspa.com

SCALE
3/8" = 1'



DWG TYPE
Tile Layout

DWG NAME

STEVEN HARRIS SPA JOB

DATE
6/21/2012

SHEET
PAGE 7 OF 7

STANDARD
Rckhe'Rqqn'cpf 'Ur c
IN-GROUND INSTALLATION
INSTRUCTIONS

SET-UP AND EXCAVATION

Prerequisites: Before installing your Rckhe'Rqqn'cpf 'Ur c. You may be required to acquire a permit from your local State, County, and City building dept and or Health department. (Commercial jobs need Health Dept. Approval). Your spa installation must comply with the most current codes. (**Uniform Swimming Pool, Spas & Hot Tub Code 2006 (USPC 2006)**).

Spa drawings: Request from Rckhe'Rqqn'cpf 'Ur c a current spa specific construction detail, plan and section, spa plumbing detail.

Delivery Access: Clearly determine the method of getting the spa to jobsite and into the hole. This may require the use of a crane, forklift, hoist, backhoe and/or manpower etc.

- 1) The following instructions are general guidelines and may not apply to your specific jobsite conditions. When excavating for your spa remember to provide for plumbing and light connection clearances. In order to determine how to excavate for your spa or swim spa, measure spas outside dimension (O.D.) and add minimum 3” to all sides. This 3” clearance is to accommodate jet and suction plumbing. This 3” clearance can change or be reduced upon request. Note: skimmer location, this area may have to be larger than 3”, if commercial 22”.
- 2) **Freeze Climates-** If the spa is place into a vault (typical of freeze climates) a standard 18” or more of clearance minimum from spa perimeter should be provided. This dead air space is for possible future access to spa plumbing in case of a freeze. Area drain is mandatory. **Ask your local installer** for his experienced opinion. Do not hesitate to call us because we want to be sure that your installation progresses as smoothly as possible. If you have questions call us. (: 67) 975-4322.
- 2) **Hole depth** is determined by spa’s outside height dimension. This height may vary depending if spa has skids or no skids. The spa lip may be finished or non- finished. How is the perimeter deck elevation transitioning to the spa? Focus on the finish surrounding deck elevations, thickness of the finish material on spa upper horizontal lip, equal to lip or under the spa lip. This material can be tile, stone, concrete or brick.
- 3) **Preplumb** the spa before it goes into the hole. If there are needs for electrical , bonding or control conduits run them as well before dropping in hole. Connect bond wire to niche would be best.
- 4) **Spa should sit on level 3 ½” thick reinforced concrete pad. Sweep debris off pad prior to dropping in hole.**
- 5) **Install spa** into the hole on top of concrete pad. Use the Eye bolts provided for crane, forklift etc. rigging. Do not hold onto pipes. Use caution with suction and jet plumbing when lowering into hole. **DO NOT STRESS FITTINGS!** Fill Spa with water and check for leaks prior to backfill.

- 6) **Check site reference** points for proper spa positioning (i.e., squaring to house, garage, etc.).
- 7) **Shim to level spa.** Shim with non-compression able material. Re square to house, or ref. point.
- 8) **Dry pack** with cement the gaps that have been created when shimming spa level.
- 9) **Connect pipes to tees** if spa is preplumb. Installers properly support your new plumbing from stressing spas preplumb fittings. After electrical conduit and bond wire is connected to light niche, water test spa before back filling with sand.
NOTE: All Pacific Pool and Spa products are water tested prior to leaving factory.

ELECTRICAL:

- 1) All electrical connections to spa or equipment should comply with the most recent national electrical code (NEC), state and local codes.
- 2) Connect electrical conduit to light niche. This work should be done or reviewed by a licensed electrician.
- 3) To install spa light you will need to include inside the PVC conduit to the light niche a solid #8 coated copper wire. (If you are use brass conduit, internal bond wire is not required.) This bond wire should be pulled with the light cord at the same time. This bond wire needs to be attached to the internal bonding lug of the light niche. An approved encapsulate should be applied to bond wire connection in niche.
- 4) An external #8 copper wire shall be connected to the external bonding lug on the rear of the light niche. This copper wire can then be used for additional bonding requirements (i.e., handrails or any other metallic object within 5' of the spa.

PLUMBING:

- 1) **When plumbing a Pacific Pool and Spa it is important to properly size the plumbing. We highly recommend that you follow the pump manufacturer's pipe sizing requirements and Uniform Swimming Pool, Spas & Hot Tub Code 2006 (USPC 2006). This code book is available at www.IAPMO.org or (909) 472 4100.**
- 2) The jet air venturi should be a Hartford loop design adjacent to spa shell and air entry point can be located next to spa or remotely at equipment.
- 3) Fill spa with water and test the system for leaks PRIOR to backfilling with sand.

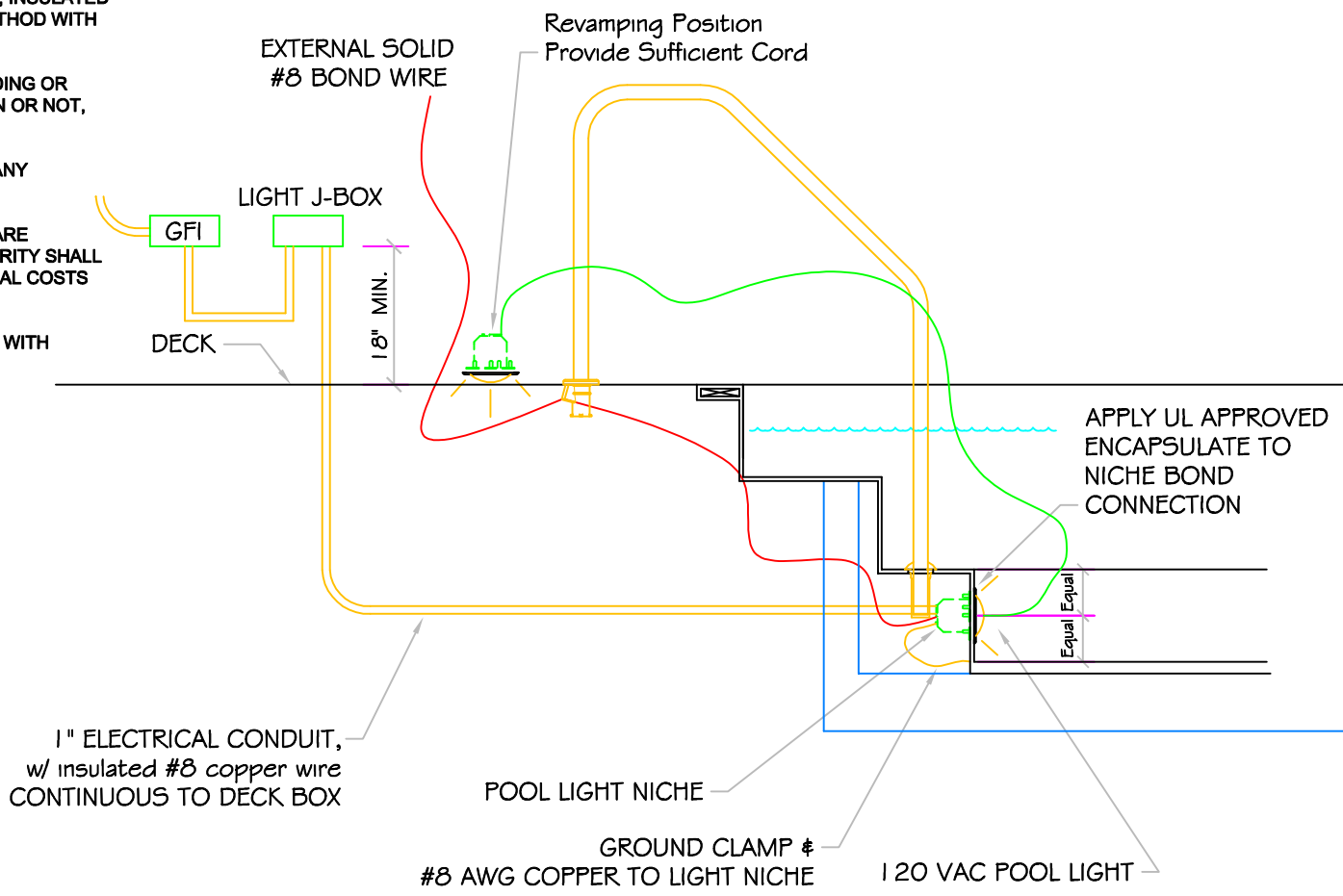
SAND BACK FILL:

- 1) **With water in spa, back-fill around spa perimeter with dry plaster sand and wet wash with hydraulic attachment to hose. Let set for one hour and hydraulic dry again. Be sure water level in spa is at the highest level. Any questions please call us. (888) 479-4677.**
- 2) **If spa is free standing on elevated deck or a structure, it is important to fill spa with water and load area prior to installing coping or perimeter decking. If spa is installed in a vault situation a area drain is needed.**

POOL BONDING REQUIREMENTS:

1. THE FOLLOWING PARTS SHALL BE BONDED TOGETHER AND CONNECTED TO THE COMMON BONDING GRID.
 - A. ALL THE METALLIC PARTS OF THE POOL STRUCTURE INCLUDING COPING STONES, DECK, PERMANENT PLAY STRUCTURES, PERMANENT EXERCISE STRUCTURES.
 - B. ALL METAL FITTINGS WITHIN OR ATTACHED TO THE POOL STRUCTURE
 - C. METAL PARTS ASSOCIATED WITH THE POOL WATER CIRCULATING SYSTEM, INCLUDING PUMPS, FILTERS, AND HEATERS.
 - D. METAL PARTS ASSOCIATED WITH POOL COVERS
 - E. METAL SHEATHED CABLES AND RACEWAYS, METAL PIPING AND ALL FIXED METAL PARTS WITHIN 5 FEET HORIZONTALLY OF INSIDE WALLS OF POOL AND WITHIN 12 FEET ABOVE MAXIMUM WATER LEVEL OF POOL.
 - F. METAL PARTS ASSOCIATED WITH OBSERVATION STANDS, TOWERS, PLATFORMS, AND DIVING STRUCTURES.
2. BONDING CONDUCTORS SHALL BE MINIMUM #8 SOLID COPPER, INSULATED E.C. SHALL COORDINATE APPROVED CONNECTOR TYPE AND METHOD WITH LOCAL ELECTRICAL AND/ OR POOL INSPECTOR.
3. SPECIFIC MANUFACTURER'S INSTRUCTIONS REGARDING BONDING OR GROUNDING OF POOL EQUIPMENT, WHETHER INDICATED HEREIN OR NOT, SHALL BE STRICTLY FOLLOWED.
4. THE COMMON BONDING GRID SHALL NOT BE CONNECTED TO ANY ELECTRICAL DISTRIBUTION EQUIPMENT.
5. ANY PARTS IN ADDITION TO THOSE DESCRIBED HEREIN THAT ARE INDICATED BY POOL CONTRACTOR OR LOCAL INSPECTION AUTHORITY SHALL BE BONDED TO THE COMMON BONDING GRID WITH NO ADDITIONAL COSTS INCURRED BY THE OWNER.
6. THE ELECTRICAL CONTRACTOR SHALL COORDINATE BONDING WITH GENERAL CONTRACTOR.

LIGHT DETAIL



ALL DIMENSIONS SUBJECT TO 1/4" TOLERANCES

		SIZE	DWG NAME	DWG TYPE
		A	DETAILS	Detail
		SCALE 1/2" = 1'	DATE 7/FF20FG	SHEET PAGE 1 OF 1