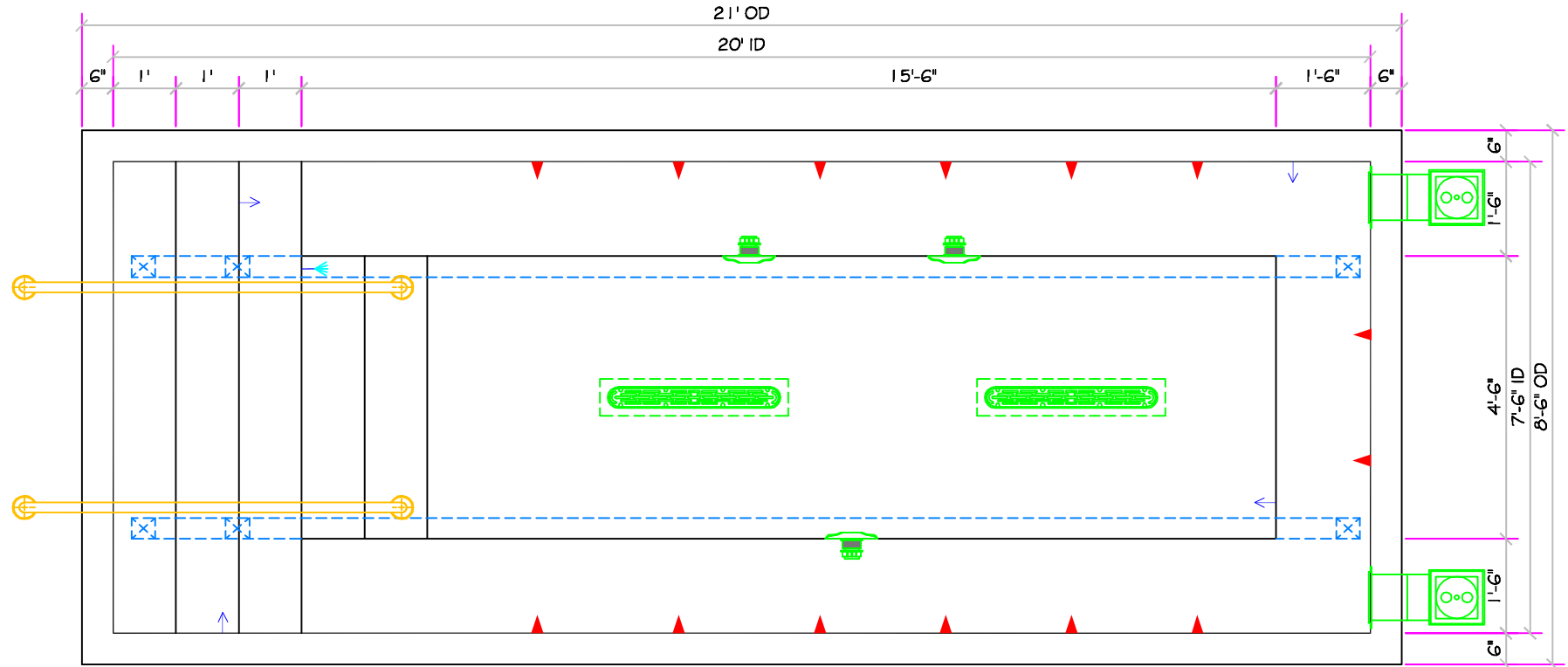


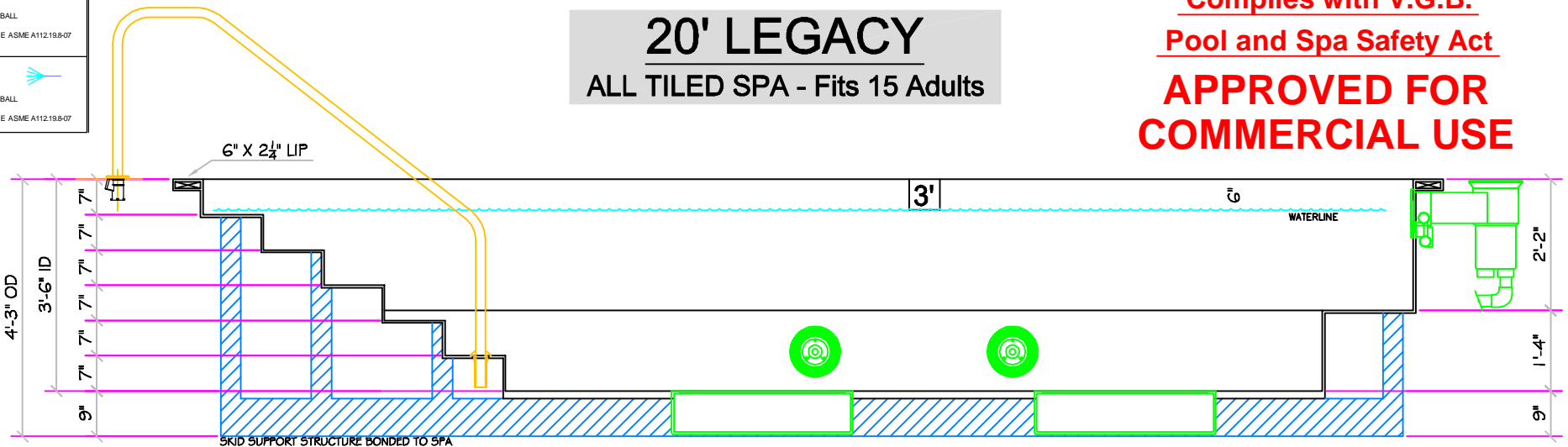
SPECIFICATIONS	
DRY WEIGHT:	3850 LBS.
TOTAL WEIGHT:	28670 LBS.
WATER:	2977 GAL
VOLUME:	398 Cu.Ft.
WEIGHT:	24820 LBS.
SURFACE AREA:	150 SQ. FT.
IAPMO#:	1138
FDA#:	2030305

SKID SUPPORT STRUCTURE* BONDED TO SPA	
	*SKIDS SUPPLIED BY NESPA
LIGHT NICHE	
	SPA BRIGHT - 120 V, 100 WATT, 50 CORD, U.L. APPROVED
SKIMMER	
	HAYWARD SP-108/FVE SURFACE SKIMMER W/ EQUALIZER, NSF APPROVED
MAIN DRAIN	
	AquaSer 32CDFLR, 32" Channel Drain, Approved Max Flow Rate/Floor = 236 GPM @ 3/4"ps, Wall = 136 GPM @ 1.9"ps, V.G.B Approved Safety Drain
SIDEWALL SUCTION	
	Paramount SDX 10" HIGH FLOW SAFETY DRAIN, Area of Opening = 43.201 in ² , Velocity @ 200 GPM = 1.485 f/s, V.G.B Approved Safety Drain
JET	
	HYDROINLETS, 1-1/2" WATER - 1-1/2" AIR, HYDRQAIR #10-5100, COMPLIES W/ ANSI CODE ASME A112.19.8-07, U.L. APPROVED
RETURN	
	INLET FITTINGS, 1-1/2" WALL TYPE W/ EYEBALL, HYDRQAIR #10-3500, COMPLIES W/ ANSI CODE ASME A112.19.8-07, U.L. APPROVED
FILL	
	INLET FITTINGS, 1-1/2" WALL TYPE W/ EYEBALL, HYDRQAIR #10-3500, COMPLIES W/ ANSI CODE ASME A112.19.8-07, U.L. APPROVED



20' LEGACY
ALL TILED SPA - Fits 15 Adults

*** Complies with V.G.B. Pool and Spa Safety Act APPROVED FOR COMMERCIAL USE**



ALL DIMENSIONS SUBJECT TO 1/4" TOLERANCES

Feb 03, 2009 - 1:15pm

These drawings, concepts, and details contained herein are the original proprietary designs of NESPA ENTERPRISES, developed over many years of experience in the pool and spa industry and as such are protected by the copyright laws of the United States Government. Reproduction of any of the above without written permission to do so by NESPA ENTERPRISES, is illegal.

NESPA ENTERPRISES INC.
2800 Richter Ave. Ste. C Oroville, CA 95966
Office: (530) 534-9910 Fax: (530) 534-9915
E-Mail: sales@tiledspas.com Web Site: www.tiledspas.com



SIZE	DWG NAME	DWG TYPE
A	NESPA_MASTER_MODELS	SD (LA)
SCALE 3/8" = 1'	DATE 2/3/2009	SHEET PAGE 1 OF 1