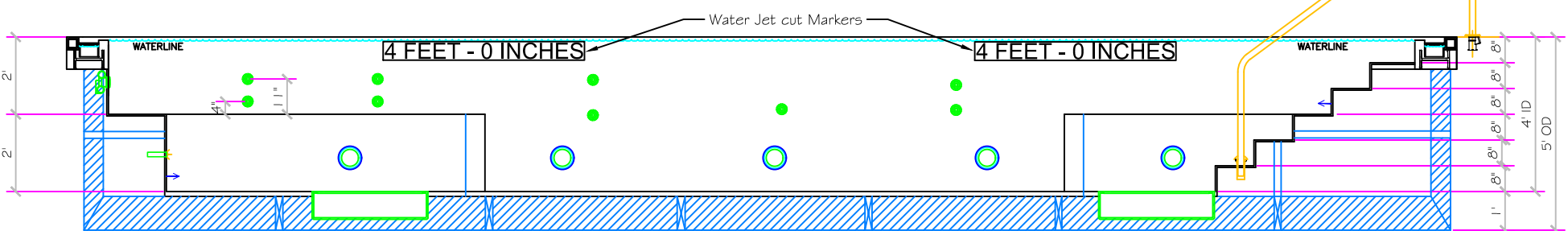


Rough Opening:
36'-2" X 15'-2" Min.
36'-4" X 15'-4" Max.

ADA LIFT



POOL INFO		GUTTER INFO	
SHELL WEIGHT	26000	SHELL WEIGHT	300 LBS.
WATER WEIGHT	77277	WATER WEIGHT	688 LBS.
TOTAL SHELL & WATER WEIGHT	103277.5	TOTAL SHELL & WATER WEIGHT	988.5 LBS.
WATER VOLUME	1549	WATER VOLUME	13.8 Cu.Ft.
WATER GALLONS	11587	WATER GALLONS	103 GAL.
SURFACE AREA	#####	SURFACE AREA	48.7 SQ. FT.
ICC ES LISTED #	PMG-1161	ICC ES LISTED #	PMG-1161
FDA#	2030305	FDA#	2030305

SECTION 1
SUBMITTAL
ALL DIMENSIONS SUBJECT TO 1/4" TOLERANCES

SKID SUPPORT STRUCTURE BONDED TO SPA

LIGHT NICHE

Panel Includes: 60 MIN. LED 12V for spa - 6" in diameter Product ID: 64510 12V - 1000 cord Adv. - 124230

SKIMMER

HAYWARD SP-1088FIVE SURFACE SKIMMER W/ EQUALIZER NSF APPROVED

SIDEWALL SUCTION

1/2" Round Shower Drain Adapter: 607940000 Supplies: Surface Outlet Floor/Wall 224 224 @ 6.3psi Complies w/ ANSI Code ASME A112.19.8-07

MAIN DRAIN

Atmospheric 300CFM 1.5" Cover (Drain) Approved Max Flow Rate: 1.5 GPM @ 2.5 PSI V.G.B. Approved

JET

HYDROJETETS 1/2" HP WATER 1-1/2" AIR Flowrate: 110 GPM COMPLIES W/ ANSI CODE ASME A112.19.8-07 UL APPROVED

RETURN

BILET FITTINGS 1/2" HP WALL TYPE W/ EVERALL BODY/W/ 1000 COMPLIES W/ ANSI CODE ASME A112.19.8-07 UL APPROVED

FILL

1/2" HP WALL TYPE W/ EVERALL BODY/W/ 1000 COMPLIES W/ ANSI CODE ASME A112.19.8-07 UL APPROVED

These drawings, concepts, and details contained herein are the original proprietary designs of **NESPA ENTERPRISES INC.**, developed over many years of experience in the industry and as such are protected by the copyright laws of the United States Government. Reproduction of any of the above without written permission to do so by **NESPA ENTERPRISES INC.**, is illegal.

NESPA ENTERPRISES INC.
2800 Richter Ave. Ste. C Oroville, CA 95966
Office: (530) 534-9910 Fax: (530) 534-9915
E-Mail: jim@tiledspas.com Web Site: www.tiledspas.com

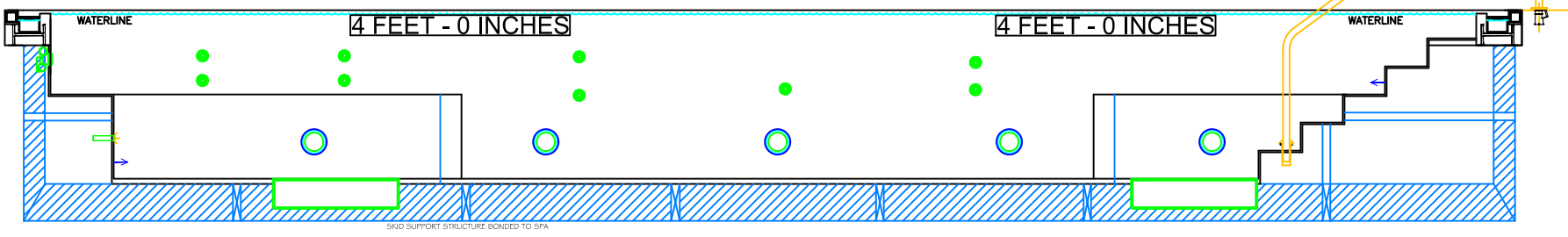
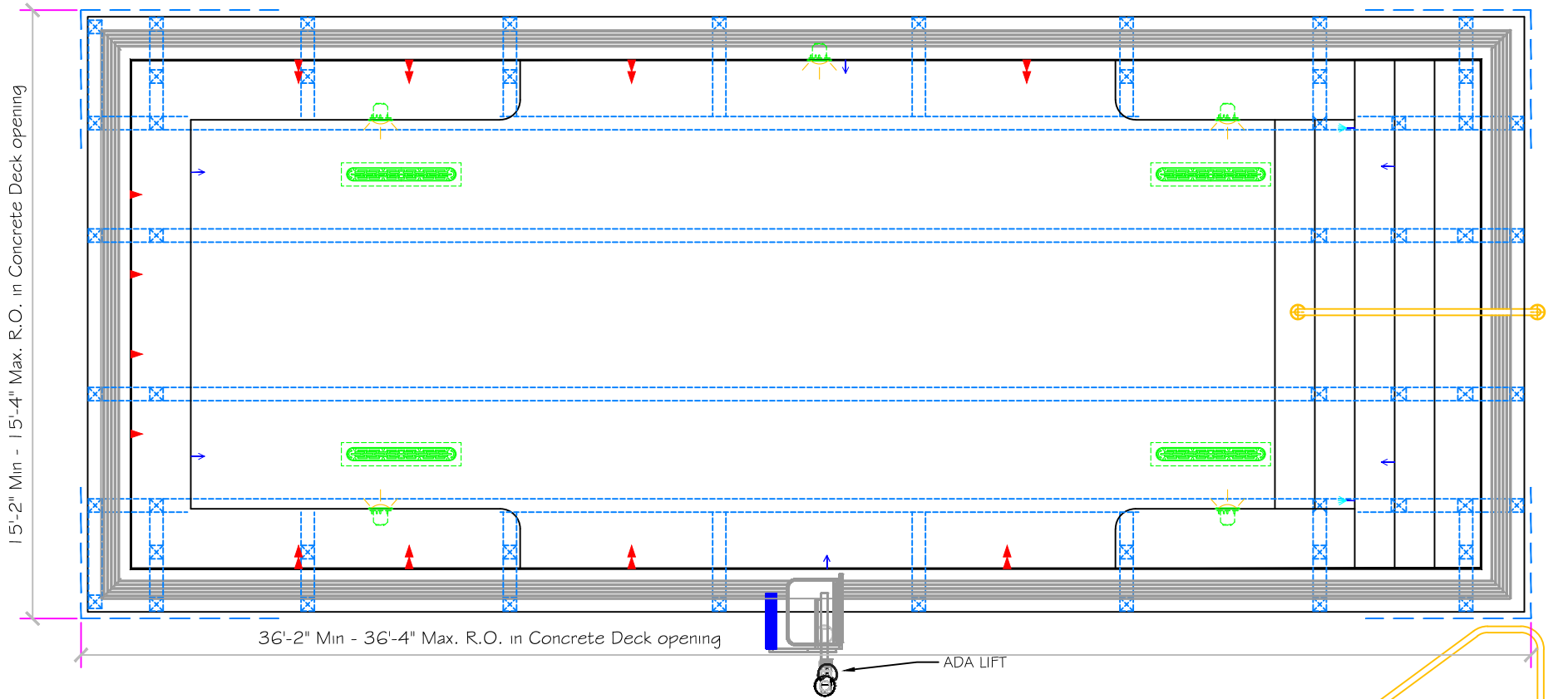


If printing as a PDF:
Page Scaling: None
DWG NAME: 1415 PARK PLACE

SCALE: 1/4" = 1'
DATE: 6/11/2014

DWG TYPE: SD
SHEET: PAGE 1 OF 11

6/11/2014 12:11:00 PM



6/11/2014 12:02 PM **SUBMITTAL**
 ALL DIMENSIONS SUBJECT TO 1/4" TOLERANCES

These drawings, concepts, and details contained herein are the original proprietary designs of **NESPA ENTERPRISES INC.**, developed over many years of experience in the industry and as such are protected by the copyright laws of the United States Government. Reproduction of any of the above without written permission to do so by **NESPA ENTERPRISES INC.**, is illegal.

NESPA ENTERPRISES INC.
 2800 Richter Ave. Ste. C Oroville, CA 95966
 Office: (530) 534-9910 Fax: (530) 534-9915
 E-Mail: jim@tiledspas.com Web Site: www.tiledspas.com



If printing as a PDF:
 Page Scaling: None

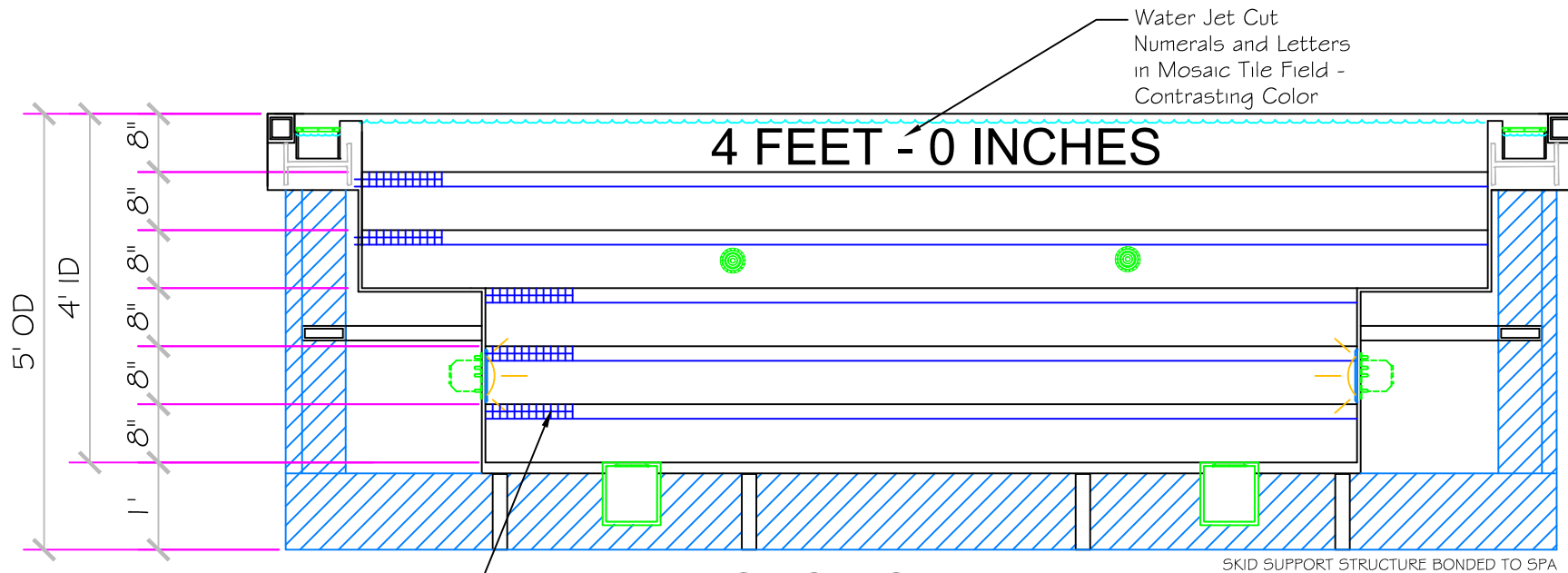
DWG NAME 1415 PARK PLACE

SCALE
 1/4" = 1'

DATE
 6/11/2014

DWG TYPE
 Support Layout

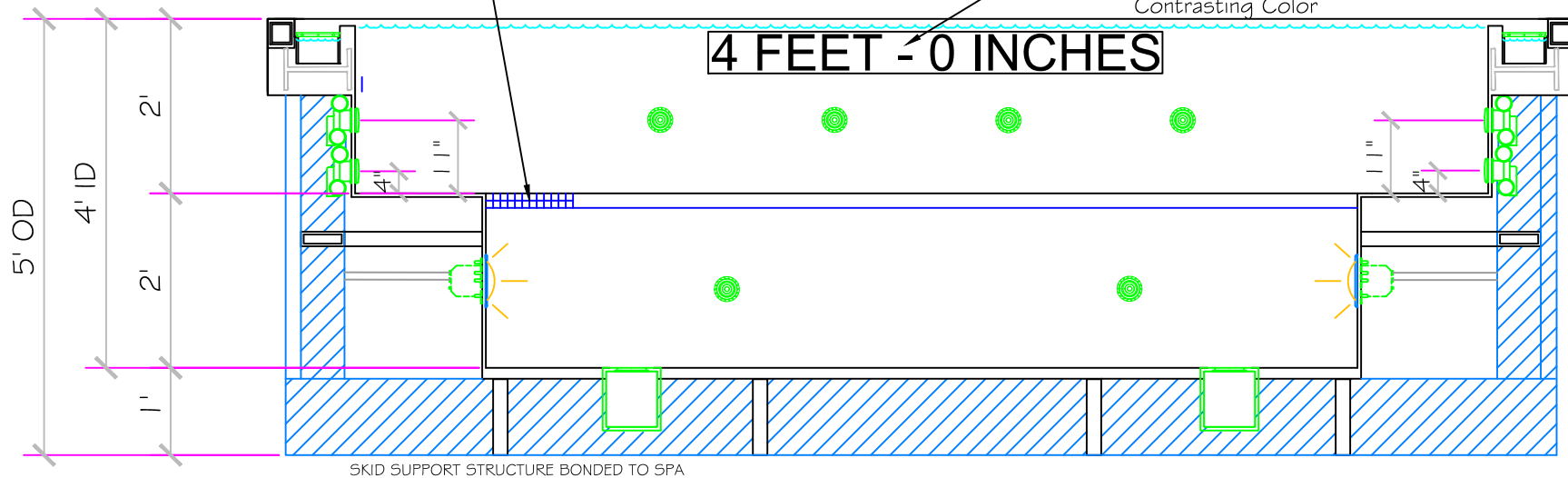
SHEET
 PAGE 2 OF 11



SECTION 2

Contrasting 2" Band
- vertical and
Horizontal at all
Treads

Water Jet Cut
Numerals and Letters
in Mosaic Tile Field -
Contrasting Color



SECTION 3

6/11/2014 12:04 PM **SUBMITTAL**

ALL DIMENSIONS SUBJECT TO 1/4" TOLERANCES

These drawings, concepts, and details contained herein are the original proprietary designs of **NESPA ENTERPRISES INC.**, developed over many years of experience in the industry and as such are protected by the copyright laws of the United States Government. Reproduction of any of the above without written permission to do so by **NESPA ENTERPRISES INC.**, is illegal.

NESPA ENTERPRISES INC.
2800 Richter Ave. Ste. C Oroville, CA 95966
Office: (530) 534-9910 Fax: (530) 534-9915
E-Mail: jim@tiledspas.com Web Site: www.tiledspas.com



If printing as a PDF:
Page Scaling: None
DWG NAME: 1415 PARK PLACE

SCALE
1/2" = 1'
DATE: 6/11/2014

DATE: 6/11/2014

DWG TYPE: Spa Section
SHEET: PAGE 3 OF 11

- #1 - FIELD TILE: Dal Tile D617 Arctic White 1 x 1
- #2 - WATERLINE (optional): Dal Tile D617 Arctic White 1 x 1
- #3 - BENCH & STEP EDGES (optional): Dal Tile D311 Black 1 x 1
- #4 - TILED LIP (optional): Dal Tile D617 Arctic White 1 x 1

NOTE: 1"x 1"x 1/4" Dal Tile Preferred Colors to be determined by Architect of record.

Tile Calculation:

Dal Tile D617 Arctic White 1 x 1 = 633 Sq. Ft.
 Dal Tile D311 Black 1 x 1 = 51 Sq Ft

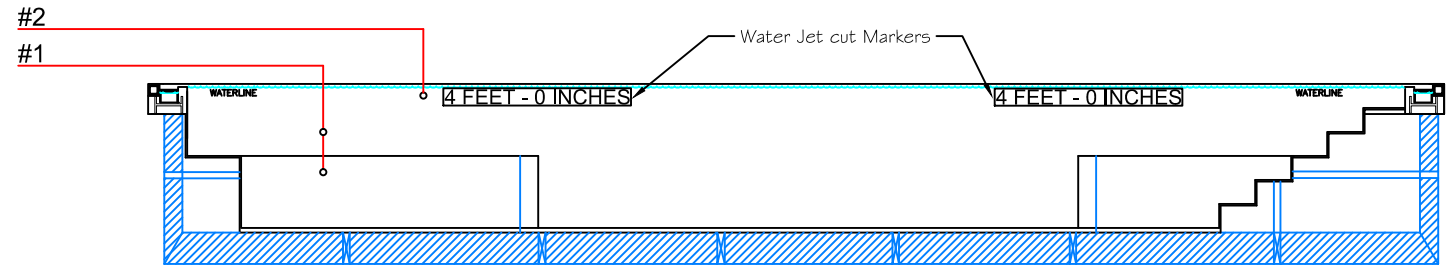
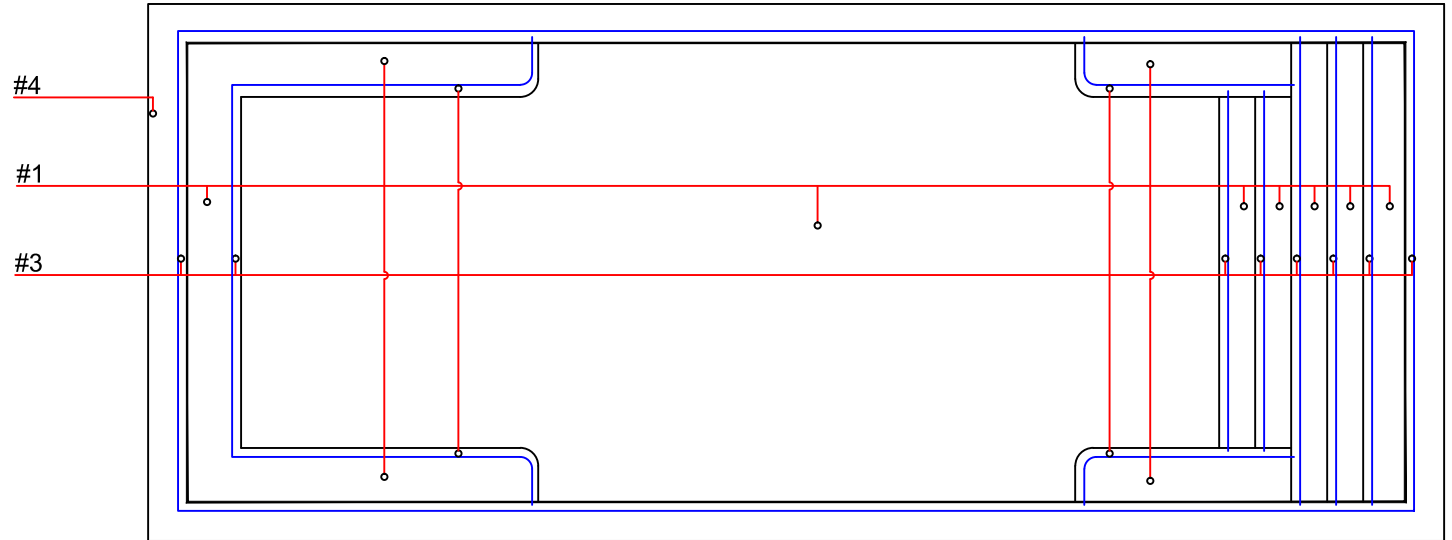
Date: _____

Approval: _____

#1 - GROUT: _____

#2 - GROUT: _____

#3 - GROUT: _____



6/11/2014 12:05 PM **SUBMITTAL**

ALL DIMENSIONS SUBJECT TO 1/4" TOLERANCES

These drawings, concepts, and details contained herein are the original proprietary designs of **NESPA ENTERPRISES INC.**, developed over many years of experience in the industry and as such are protected by the copyright laws of the United States Government. Reproduction of any of the above without written permission to do so by **NESPA ENTERPRISES INC.**, is illegal.

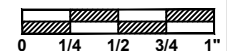
NESPA ENTERPRISES INC.
 2800 Richter Ave. Ste. C Oroville, CA 95966
 Office: (530) 534-9910 Fax: (530) 534-9915
 E-Mail: jim@tiledspas.com Web Site: www.tiledspas.com



If printing as a PDF:

Page Scaling:

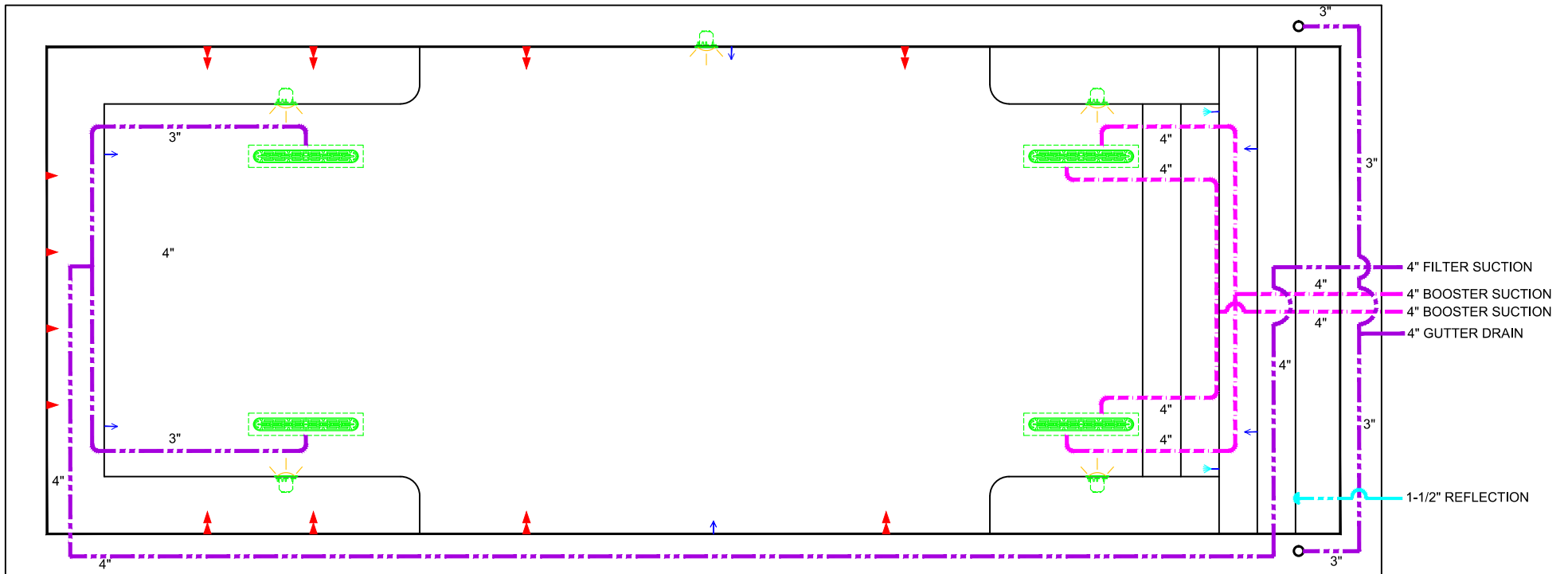
SCALE
 3/16" = 1'



DWG NAME
 1415 PARK PLACE

DATE
 6/11/2014

DWG TYPE
 Spa Tile
 SHEET
 PAGE 4 OF 11



BOOSTER & FILTER INLET

6/11/2014 12:10:06 PM **SUBMITTAL**

ALL DIMENSIONS SUBJECT TO 1/4" TOLERANCES

These drawings, concepts, and details contained herein are the original proprietary designs of **NESPA ENTERPRISES INC.**, developed over many years of experience in the industry and as such are protected by the copyright laws of the United States Government. Reproduction of any of the above without written permission to do so by **NESPA ENTERPRISES INC.**, is illegal.

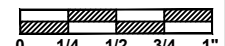
NESPA ENTERPRISES INC.
 2800 Richter Ave. Ste. C Oroville, CA 95966
 Office: (530) 534-9910 Fax: (530) 534-9915
 E-Mail: jim@tiledspas.com Web Site: www.tiledspas.com



If printing as a PDF:

Page Scaling:

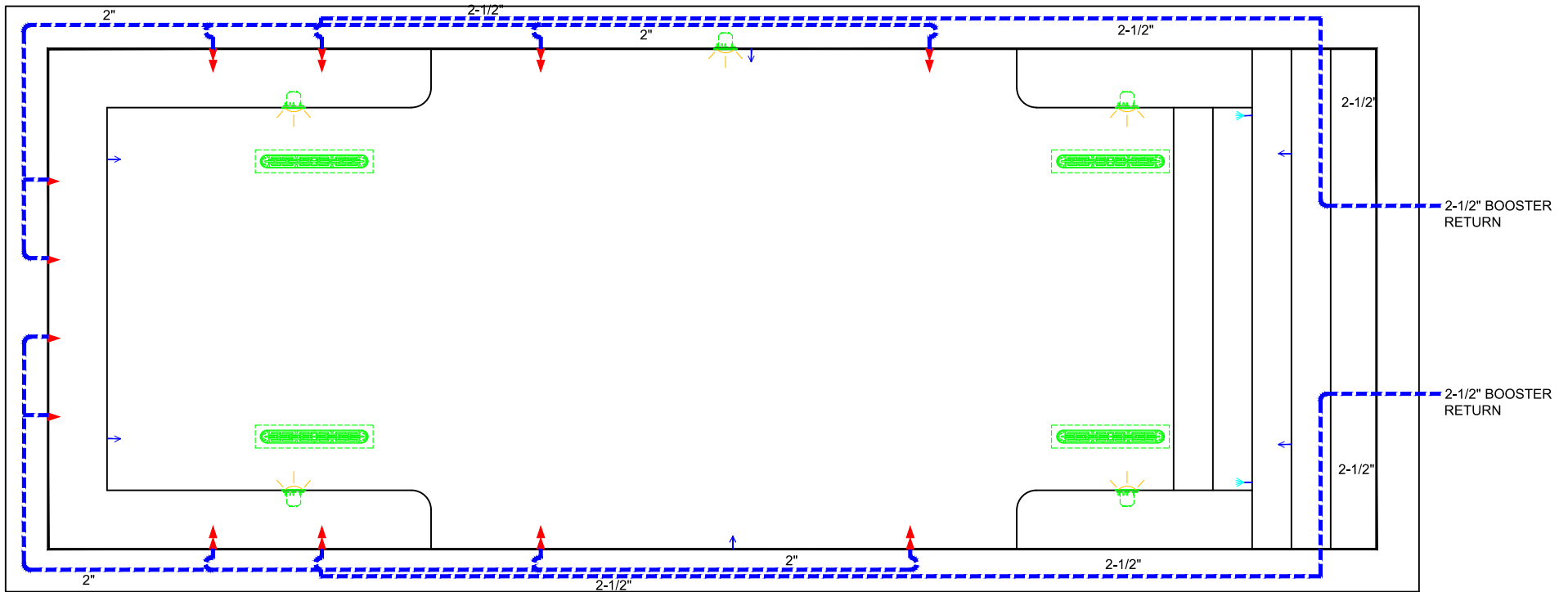
SCALE
 1/4" = 1'



DWG NAME 1415 PARK PLACE

DATE 6/11/2014

DWG TYPE
 Plumbing Inlet
 SHEET
 PAGE 5 OF 11



BOOSTER OUTLET

6/11/2014 12:10:07 PM **SUBMITTAL**

ALL DIMENSIONS SUBJECT TO 1/4" TOLERANCES

These drawings, concepts, and details contained herein are the original proprietary designs of **NESPA ENTERPRISES INC.**, developed over many years of experience in the industry and as such are protected by the copyright laws of the United States Government. Reproduction of any of the above without written permission to do so by **NESPA ENTERPRISES INC.**, is illegal.

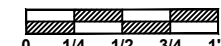
NESPA ENTERPRISES INC.
 2800 Richter Ave. Ste. C Oroville, CA 95966
 Office: (530) 534-9910 Fax: (530) 534-9915
 E-Mail: jim@tiledspas.com Web Site: www.tiledspas.com



If printing as a PDF:

Page Scaling:

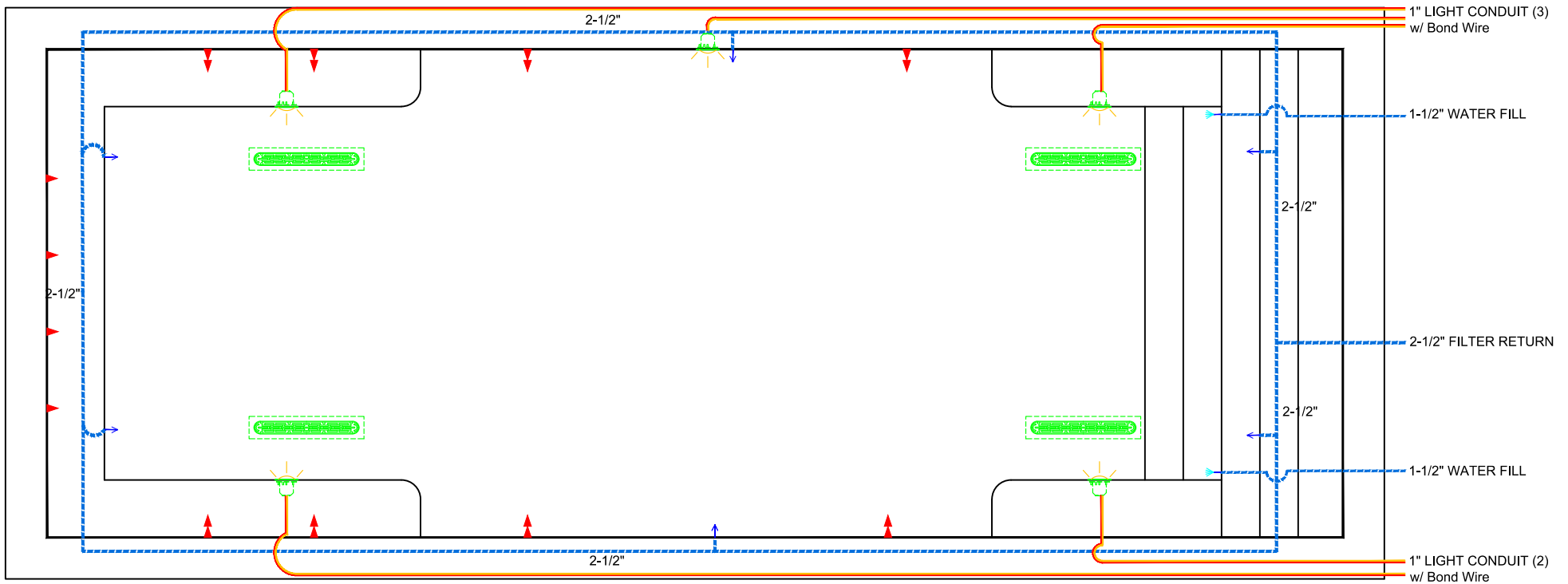
SCALE
 1/4" = 1'



DWG NAME 1415 PARK PLACE

DATE 6/11/2014

DWG TYPE
 Plumbing Outlet
 SHEET
 PAGE 6 OF 11



FILTER OUTLET & Electrical

6/11/2014 12:10:08 PM **SUBMITTAL**
ALL DIMENSIONS SUBJECT TO 1/4" TOLERANCES

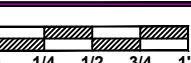
These drawings, concepts, and details contained herein are the original proprietary designs of **NESPA ENTERPRISES INC.**, developed over many years of experience in the industry and as such are protected by the copyright laws of the United States Government. Reproduction of any of the above without written permission to do so by **NESPA ENTERPRISES INC.**, is illegal.

NESPA ENTERPRISES INC.
2800 Richter Ave. Ste. C Oroville, CA 95966
Office: (530) 534-9910 Fax: (530) 534-9915
E-Mail: jim@tiledspas.com Web Site: www.tiledspas.com



If printing as a PDF:
Page Scaling:

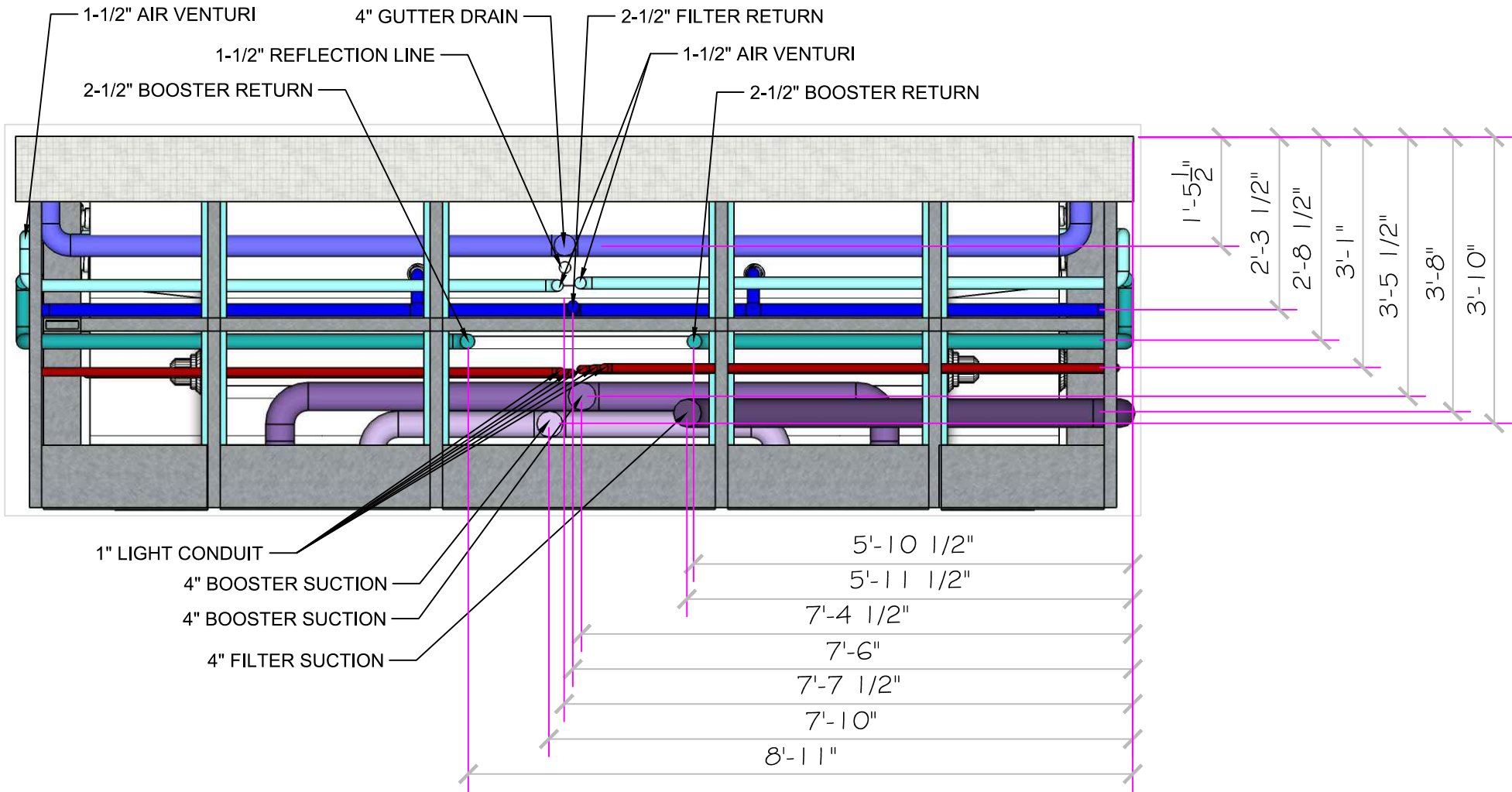
SCALE
1/4" = 1'



DWG NAME
1415 PARK PLACE

DATE
6/11/2014

DWG TYPE
Plumbing Outlet (2)
SHEET
PAGE 7 OF 11



6/11/2014 12:10 PM **SUBMITTAL**

ALL DIMENSIONS SUBJECT TO 1/4" TOLERANCES

These drawings, concepts, and details contained herein are the original proprietary designs of **NESPA ENTERPRISES INC.**, developed over many years of experience in the industry and as such are protected by the copyright laws of the United States Government. Reproduction of any of the above without written permission to do so by **NESPA ENTERPRISES INC.**, is illegal.

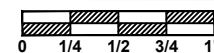
NESPA ENTERPRISES INC.
 2800 Richter Ave. Ste. C Oroville, CA 95966
 Office: (530) 534-9910 Fax: (530) 534-9915
 E-Mail: jim@tiledspas.com Web Site: www.tiledspas.com



If printing as a PDF:

Page Scaling:

SCALE
N/A

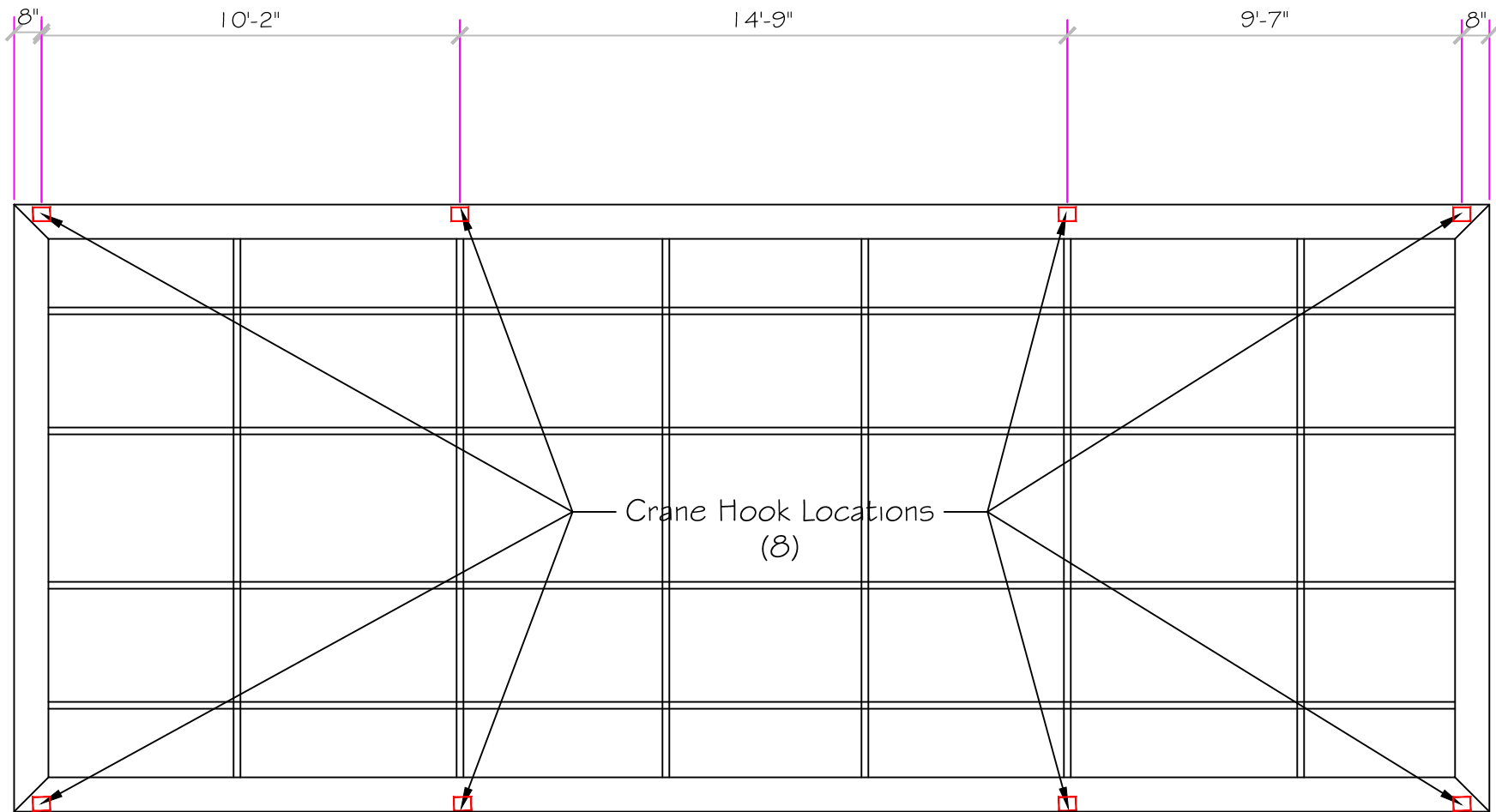


DWG TYPE
Plumbing Elevation

DWG NAME
1415 PARK PLACE

DATE
5/23/2014

SHEET
PAGE 8 OF 11



6/11/2014 12:11:11 PM

These drawings, concepts, and details contained herein are the original proprietary designs of **NESPA ENTERPRISES INC.**, developed over many years of experience in the industry and as such are protected by the copyright laws of the United States Government. Reproduction of any of the above without written permission to do so by **NESPA ENTERPRISES INC.**, is illegal.

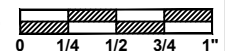
NESPA ENTERPRISES INC.
 2800 Richter Ave. Ste. C Oroville, CA 95966
 Office: (530) 534-9910 Fax: (530) 534-9915
 E-Mail: jim@tiledspas.com Web Site: www.tiledspas.com



If printing as a PDF:

Page Scaling:

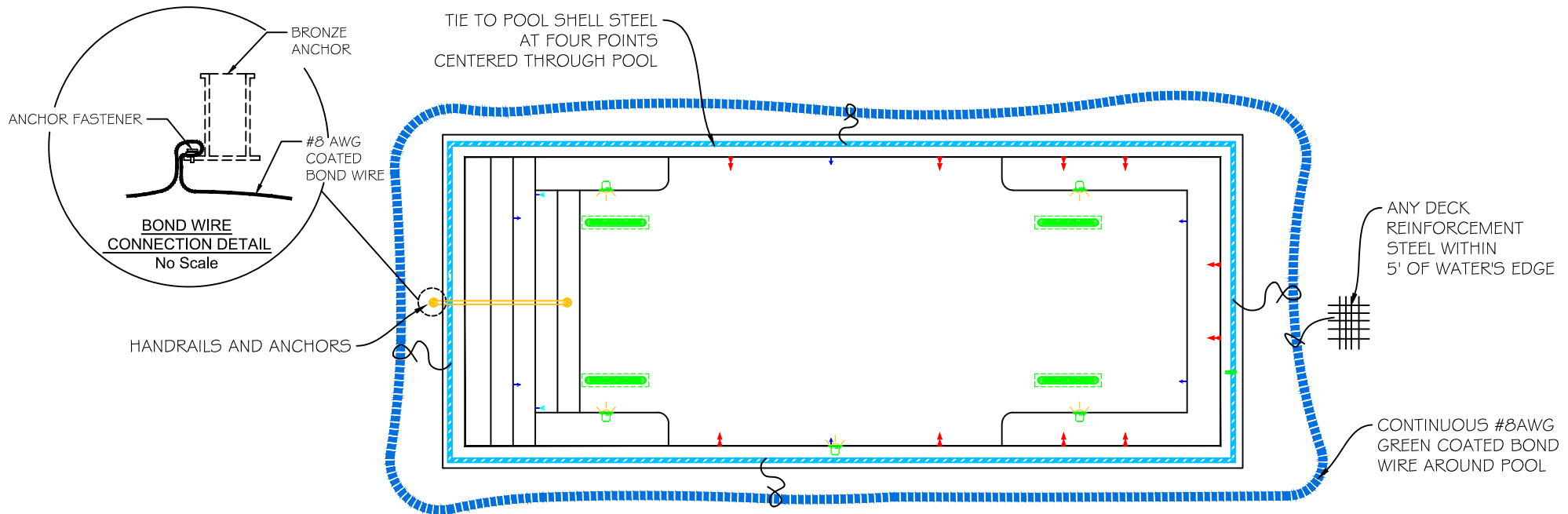
SCALE
 1/4" = 1'



DWG NAME
 1415 PARK PLACE

DATE
 5/23/2014

DWG TYPE
 Lift Hook Detail
 SHEET
 PAGE 9 OF 11



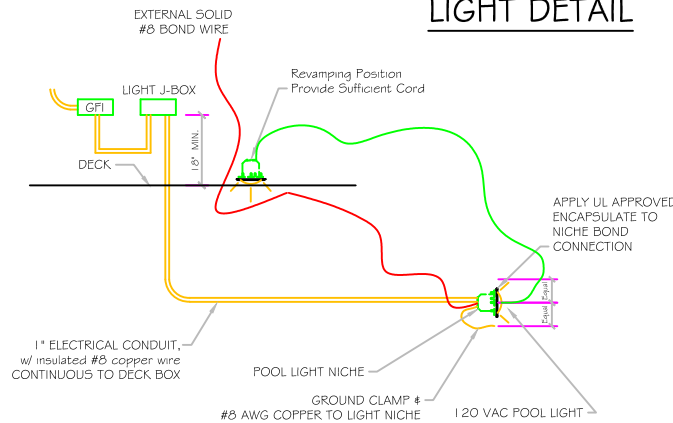
TYPICAL BONDING DETAIL

POOL BONDING REQUIREMENTS:

1. THE FOLLOWING PARTS SHALL BE BONDED TOGETHER AND CONNECTED TO THE COMMON BONDING GRID.
 - A. ALL THE METALLIC PARTS OF THE POOL STRUCTURE INCLUDING COPYING STONES, DECK, PERMANENT PLAY STRUCTURES, PERMANENT EXERCISE STRUCTURES.
 - B. ALL METAL FITTINGS WITHIN OR ATTACHED TO THE POOL STRUCTURE
 - C. METAL PARTS ASSOCIATED WITH THE POOL WATER CIRCULATING SYSTEM, INCLUDING PUMPS, FILTERS, AND HEATERS.
 - D. METAL PARTS ASSOCIATED WITH POOL COVERS
 - E. METAL SHEATHED CABLES AND RACEWAYS, METAL PIPING AND ALL FIXED METAL PARTS WITHIN 5 FEET HORIZONTALLY OF INSIDE WALLS OF POOL AND WITHIN 12 FEET ABOVE MAXIMUM WATER LEVEL OF POOL.
 - F. METAL PARTS ASSOCIATED WITH OBSERVATION STANDS, TOWERS, PLATFORMS, AND DIVING STRUCTURES.
2. BONDING CONDUCTORS SHALL BE MINIMUM #8 SOLID COPPER, INSULATED E.C. SHALL COORDINATE APPROVED CONNECTOR TYPE AND METHOD WITH LOCAL ELECTRICAL AND/ OR POOL INSPECTOR.
3. SPECIFIC MANUFACTURER'S INSTRUCTIONS REGARDING BONDING OR GROUNDING OF POOL EQUIPMENT, WHETHER INDICATED HEREIN OR NOT, SHALL BE STRICTLY FOLLOWED.
4. THE COMMON BONDING GRID SHALL NOT BE CONNECTED TO ANY ELECTRICAL DISTRIBUTION EQUIPMENT.
5. ANY PARTS IN ADDITION TO THOSE DESCRIBED HEREIN THAT ARE INDICATED BY POOL CONTRACTOR OR LOCAL INSPECTION AUTHORITY SHALL BE BONDED TO THE COMMON BONDING GRID WITH NO ADDITIONAL COSTS INCURRED BY THE OWNER.
6. THE ELECTRICAL CONTRACTOR SHALL COORDINATE BONDING WITH GENERAL CONTRACTOR.

1. INSTALL PER NEC 2008, SECTION 680 REQUIREMENTS
2. USE #8 COATED TAILS OFF BOND LOOP TO EQUIPMENT AND STEEL NOT IMMEDIATELY ADJACENT TO BOND LOOP

LIGHT DETAIL



6/11/2014 12:12 PM **SUBMITTAL**

ALL DIMENSIONS SUBJECT TO 1/4" TOLERANCES

These drawings, concepts, and details contained herein are the original proprietary designs of **NESPA ENTERPRISES INC.**, developed over many years of experience in the industry and as such are protected by the copyright laws of the United States Government. Reproduction of any of the above without written permission to do so by **NESPA ENTERPRISES INC.**, is illegal.

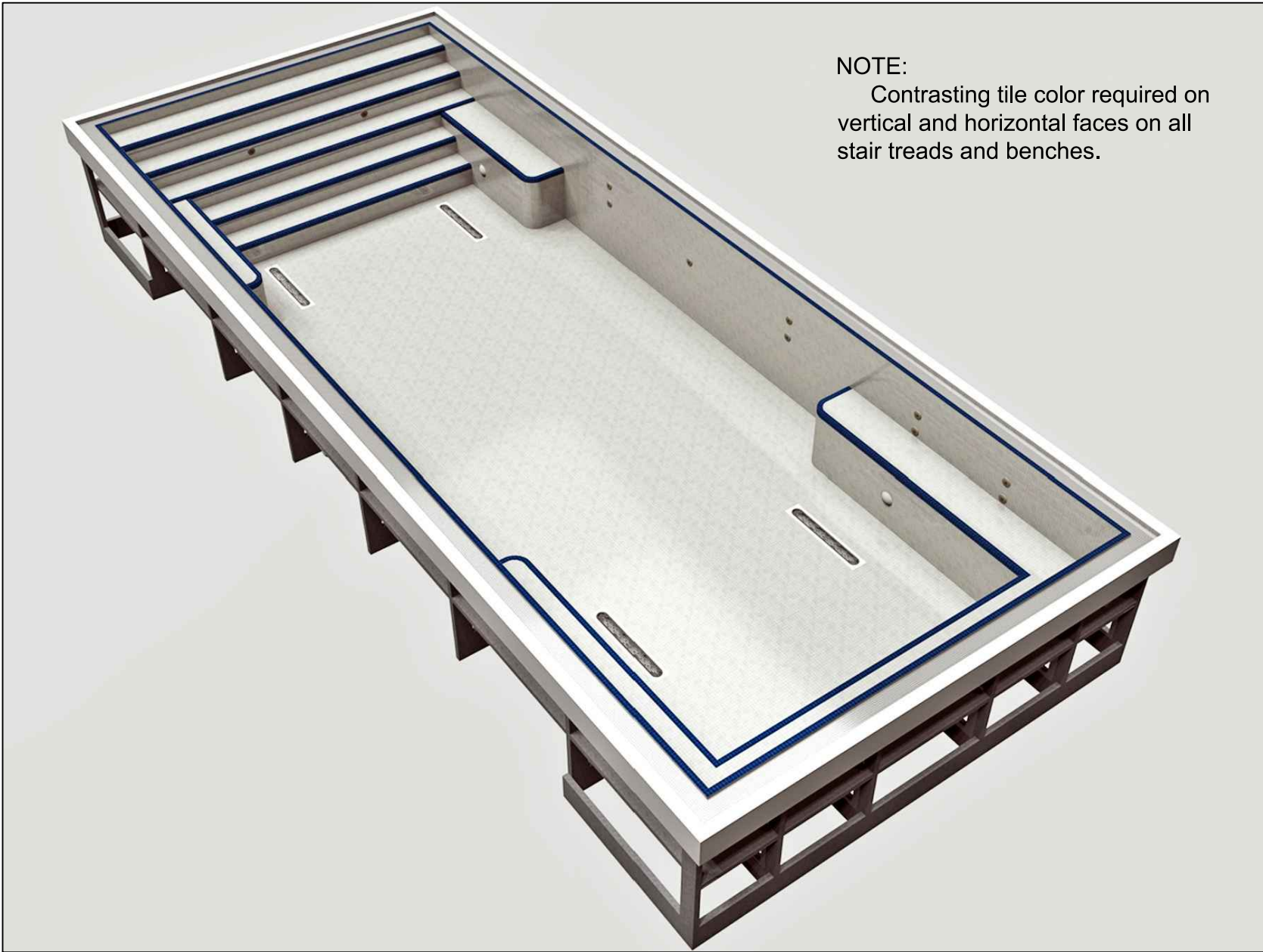
NESPA ENTERPRISES INC.
 2800 Richter Ave. Ste. C Oroville, CA 95966
 Office: (530) 534-9910 Fax: (530) 534-9915
 E-Mail: jim@tiledspas.com Web Site: www.tiledspas.com



If printing as a PDF:
 Page Scaling: None
 DWG NAME: 1415 PARK PLACE

SCALE: N/A
 DATE: 5/23/2014

DWG TYPE: Bond Detail
 SHEET: PAGE 10 OF 11



NOTE:
 Contrasting tile color required on vertical and horizontal faces on all stair treads and benches.

6/11/2014 12:14 PM **SUBMITTAL**

ALL DIMENSIONS SUBJECT TO 1/4" TOLERANCES

These drawings, concepts, and details contained herein are the original proprietary designs of **NESPA ENTERPRISES INC.**, developed over many years of experience in the industry and as such are protected by the copyright laws of the United States Government. Reproduction of any of the above without written permission to do so by **NESPA ENTERPRISES INC.**, is illegal.

NESPA ENTERPRISES INC.
 2800 Richter Ave. Ste. C Oroville, CA 95966
 Office: (530) 534-9910 Fax: (530) 534-9915
 E-Mail: jim@tiledspas.com Web Site: www.tiledspas.com



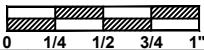
If printing as a PDF:

Page Scaling:

DWG NAME

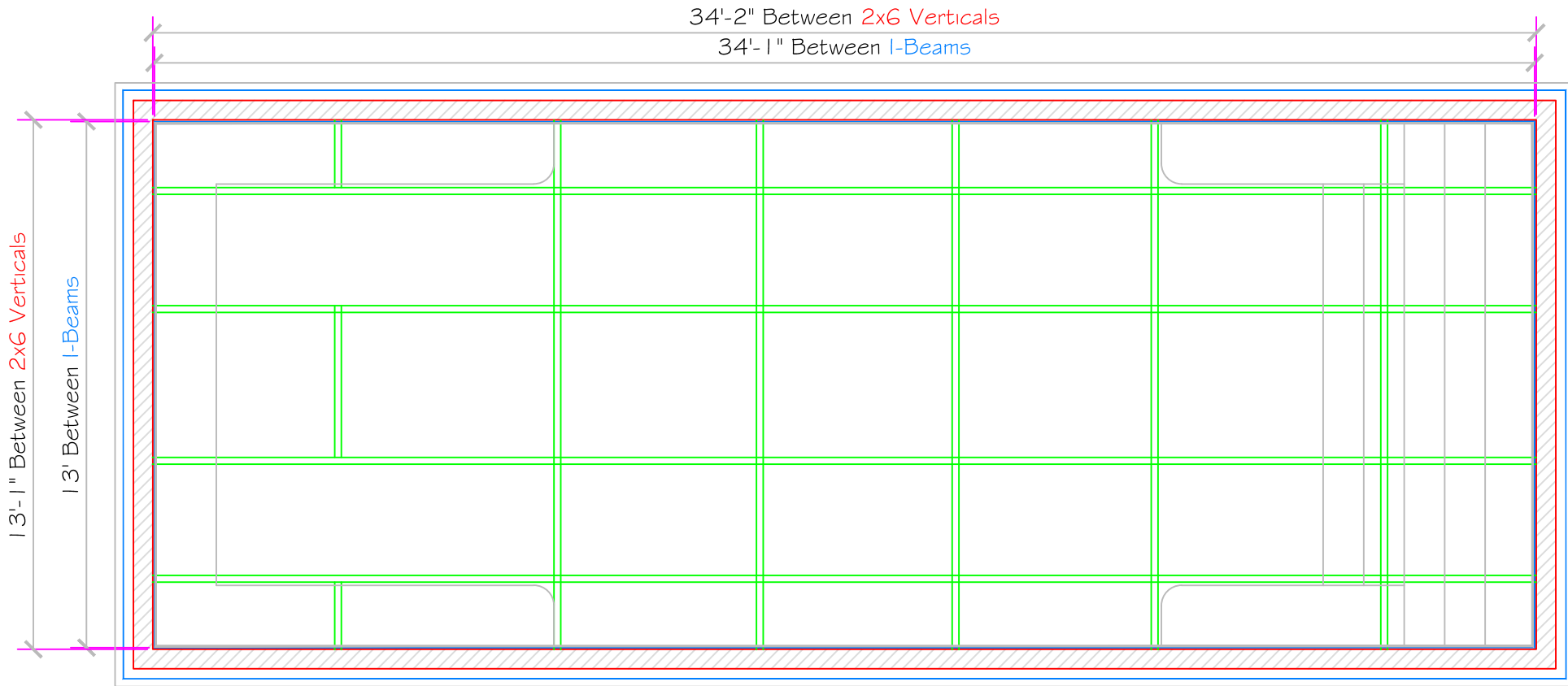
SCALE
 N/A

1415 PARK PLACE



DATE
 5/23/2014

DWG TYPE
 Render
 SHEET
 PAGE 11 OF 11



SUBMITTAL

6/11/2014 12:11:15 PM

ALL DIMENSIONS SUBJECT TO 1/4" TOLERANCES

These drawings, concepts, and details contained herein are the original proprietary designs of **NESPA ENTERPRISES INC.**, developed over many years of experience in the industry and as such are protected by the copyright laws of the United States Government. Reproduction of any of the above without written permission to do so by **NESPA ENTERPRISES INC.**, is illegal.

NESPA ENTERPRISES INC.

2800 Richter Ave. Ste. C Oroville, CA 95966

Office: (530) 534-9910

Fax: (530) 534-9915

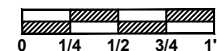
E-Mail: jim@tiledspas.com Web Site: www.tiledspas.com



If printing as a PDF:

Page Scaling:

SCALE
N/A

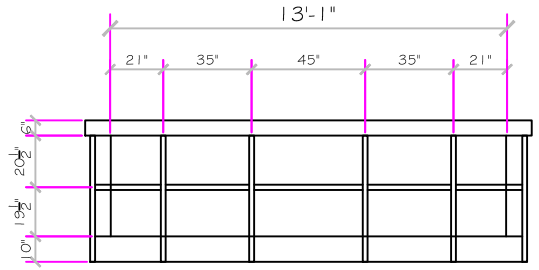
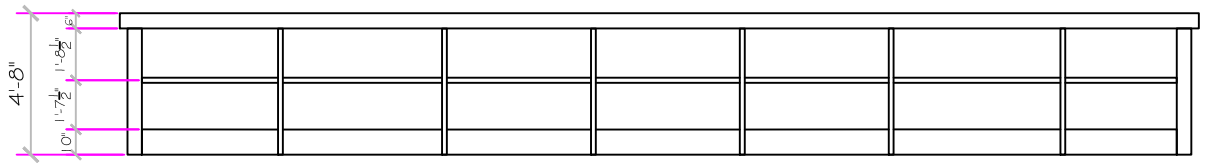
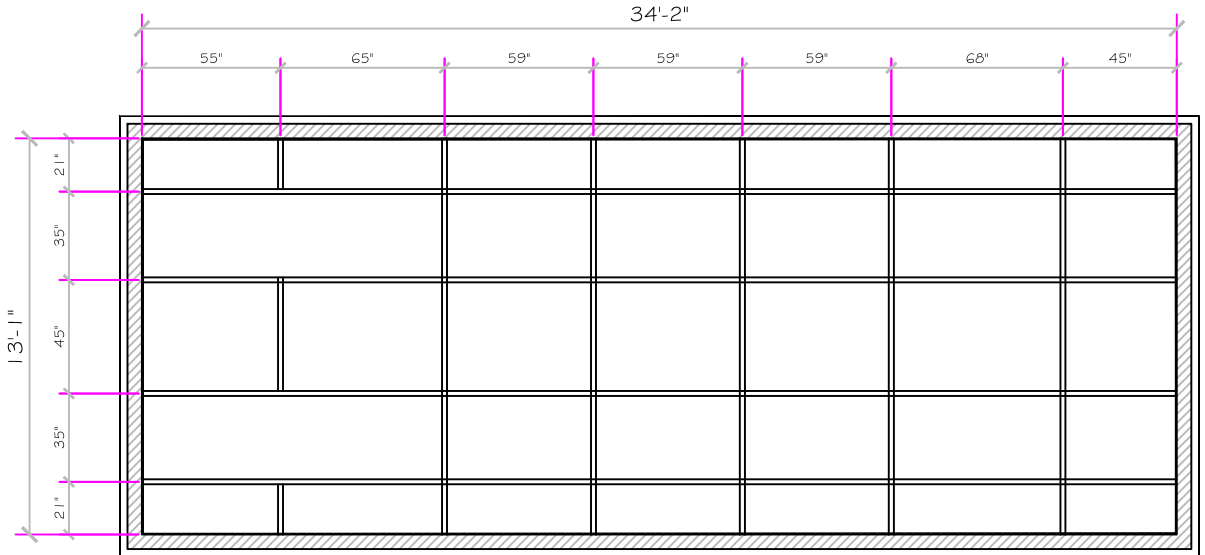


DWG TYPE
Steel Detail 1

DWG NAME
1415 PARK PLACE

DATE
6/6/2014

SHEET
PAGE 1 OF 7



6/11/2014 12:11:16 PM

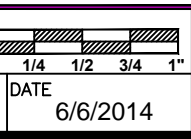
These drawings, concepts, and details contained herein are the original proprietary designs of **NESPA ENTERPRISES INC.**, developed over many years of experience in the industry and as such are protected by the copyright laws of the United States Government. Reproduction of any of the above without written permission to do so by **NESPA ENTERPRISES INC.**, is illegal.

NESPA ENTERPRISES INC.
 2800 Richter Ave. Ste. C Oroville, CA 95966
 Office: (530) 534-9910 Fax: (530) 534-9915
 E-Mail: jim@tiledspas.com Web Site: www.tiledspas.com

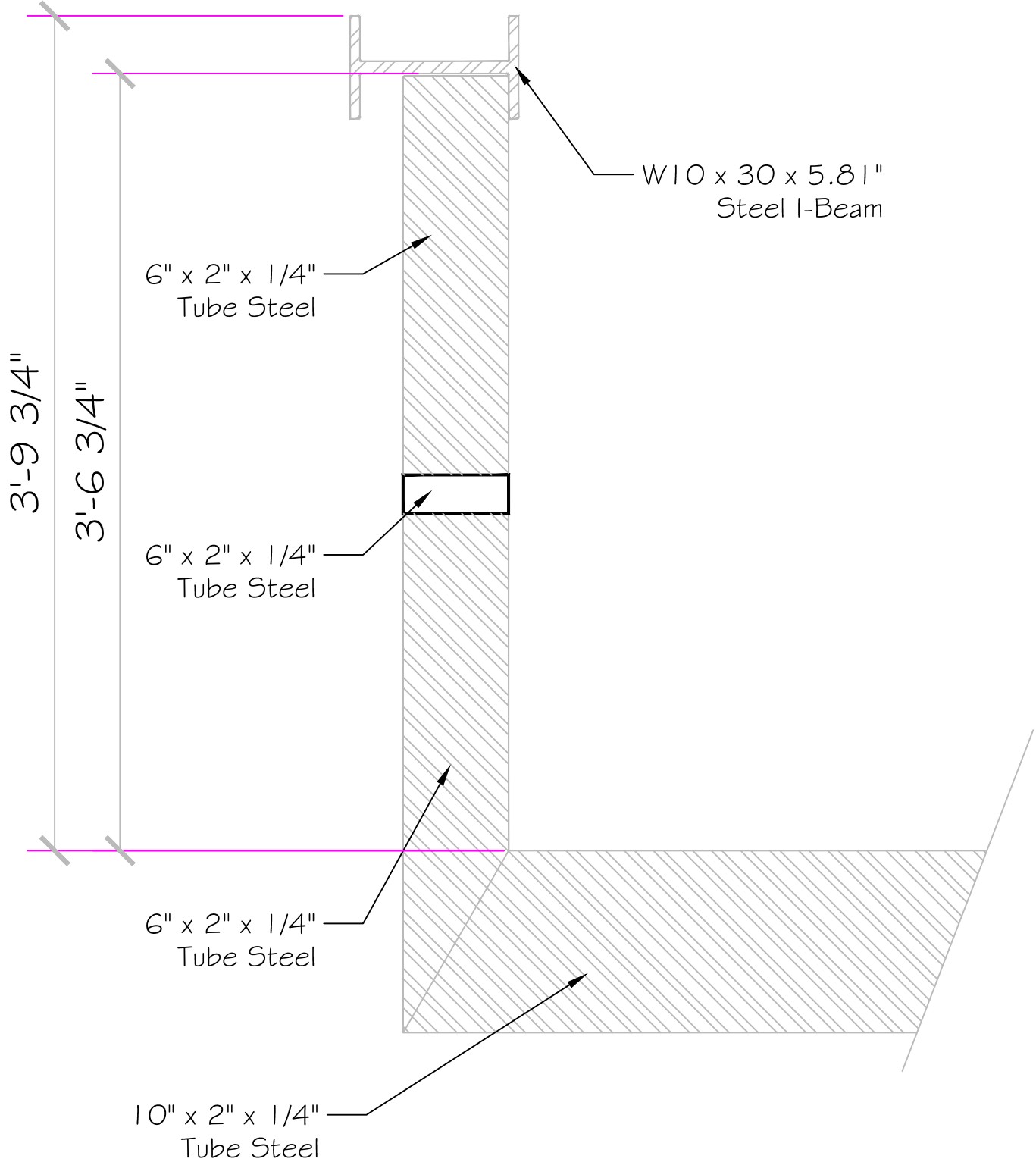


If printing as a PDF:
 Page Scaling:
 DWG NAME 1415 PARK PLACE

SCALE N/A
 DATE 6/6/2014



DWG TYPE Steel Detail 2
 SHEET PAGE 2 OF 7



6/11/2014 12:11:17 PM

NESPA ENTERPRISES INC.

2800 Richter Ave. Suite C Oroville, CA 95966

Office: (530) 534-9910 Fax: (530) 534-9915

E-Mail: jim@tiledspas.com Web Site: www.tiledspas.com



If printing as a PDF:

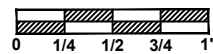
Page Scaling:

DWG NAME

1415 PARK PLACE

SCALE

1 1/2" = 1'



DWG TYPE

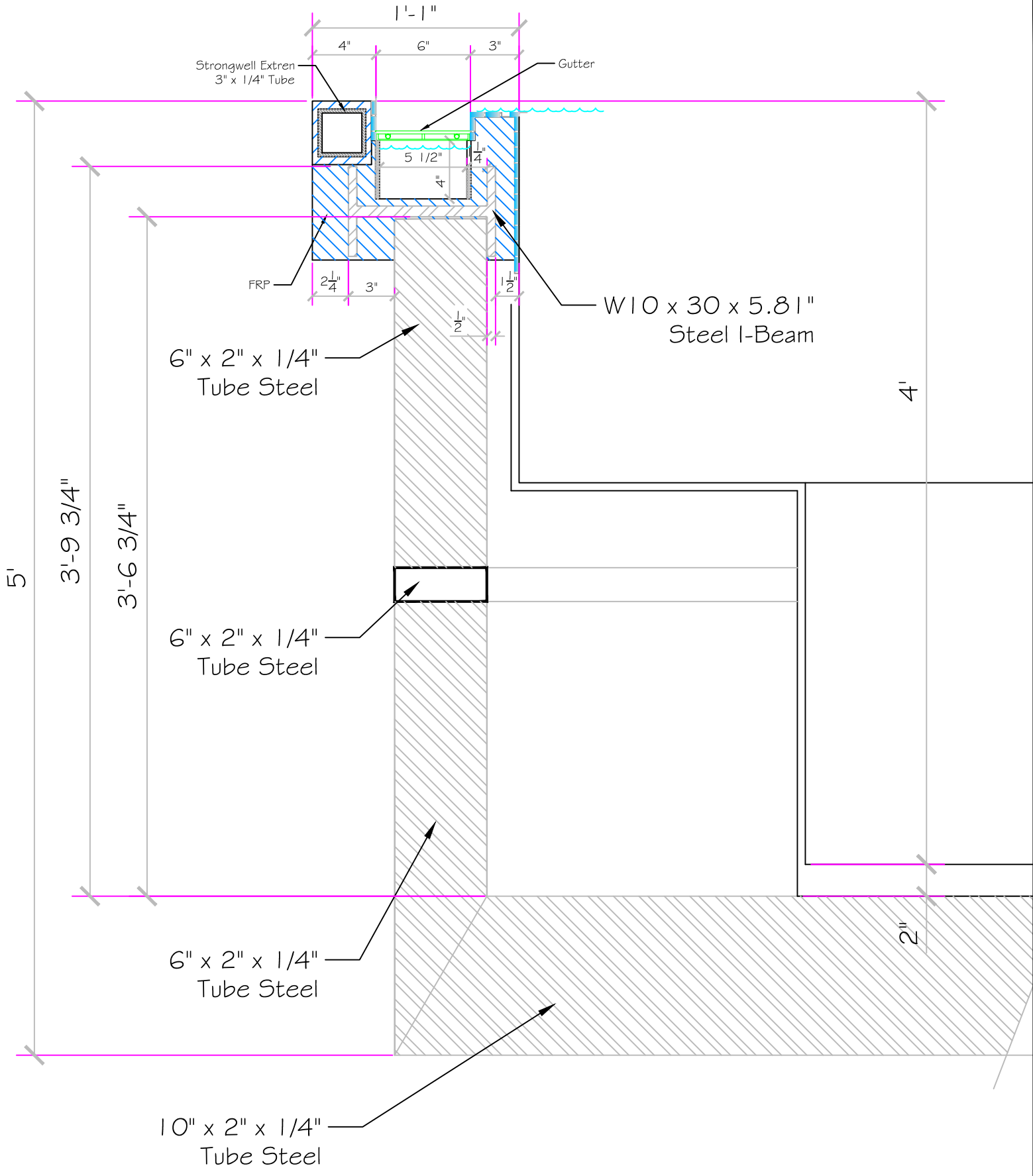
Steel Detail 3

DATE

6/6/2014

SHEET

PAGE 3 OF 7



6/11/2014 12:11:18 PM

NESPA ENTERPRISES INC.

2800 Richter Ave. Suite C Oroville, CA 95966

Office: (530) 534-9910

Fax: (530) 534-9915

E-Mail: jim@tiledspas.com Web Site: www.tiledspas.com

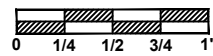


If printing as a PDF:

Page Scaling:

SCALE

1 1/2" = 1'



DWG TYPE

Steel Detail 4

DWG NAME

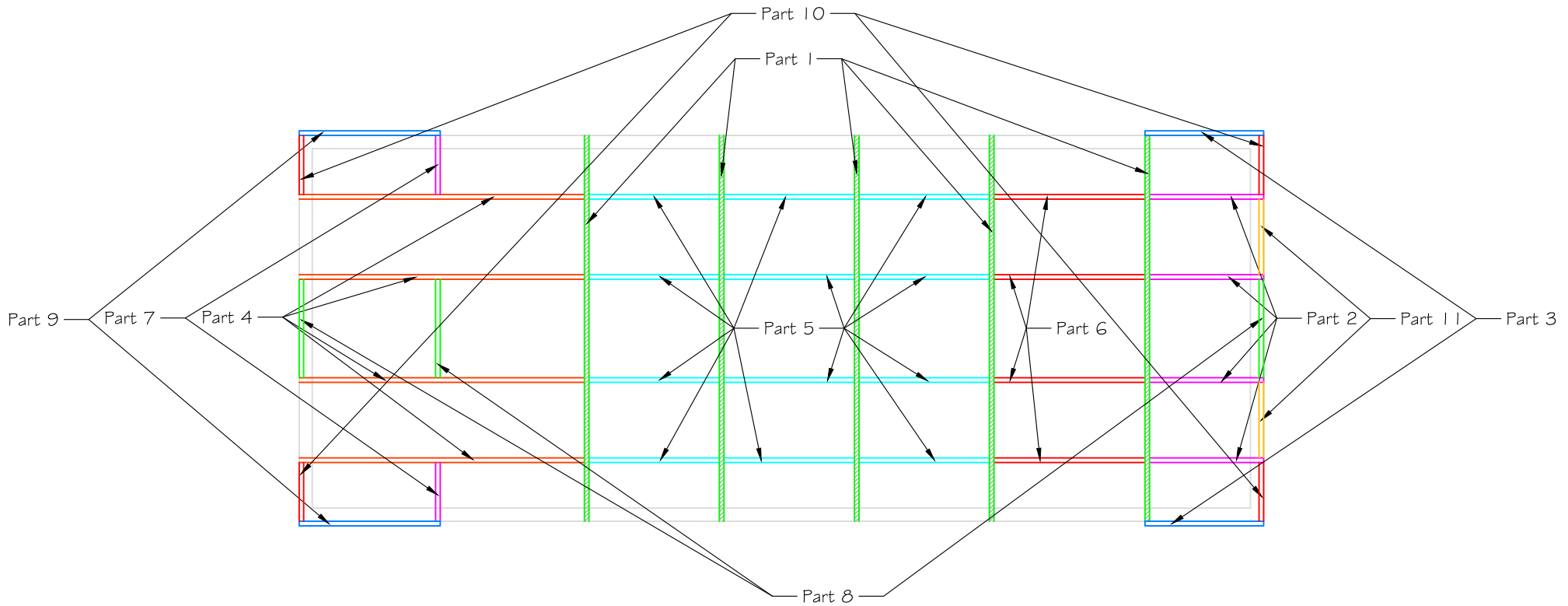
1415 PARK PLACE

DATE

6/6/2014

SHEET

PAGE 4 OF 7



6/11/2014 12:11:19 PM

These drawings, concepts, and details contained herein are the original proprietary designs of **NESPA ENTERPRISES INC.**, developed over many years of experience in the industry and as such are protected by the copyright laws of the United States Government. Reproduction of any of the above without written permission to do so by **NESPA ENTERPRISES INC.**, is illegal.

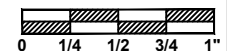
NESPA ENTERPRISES INC.
 2800 Richter Ave. Ste. C Oroville, CA 95966
 Office: (530) 534-9910 Fax: (530) 534-9915
 E-Mail: jim@tiledspas.com Web Site: www.tiledspas.com



If printing as a PDF:

Page Scaling:

SCALE
N/A

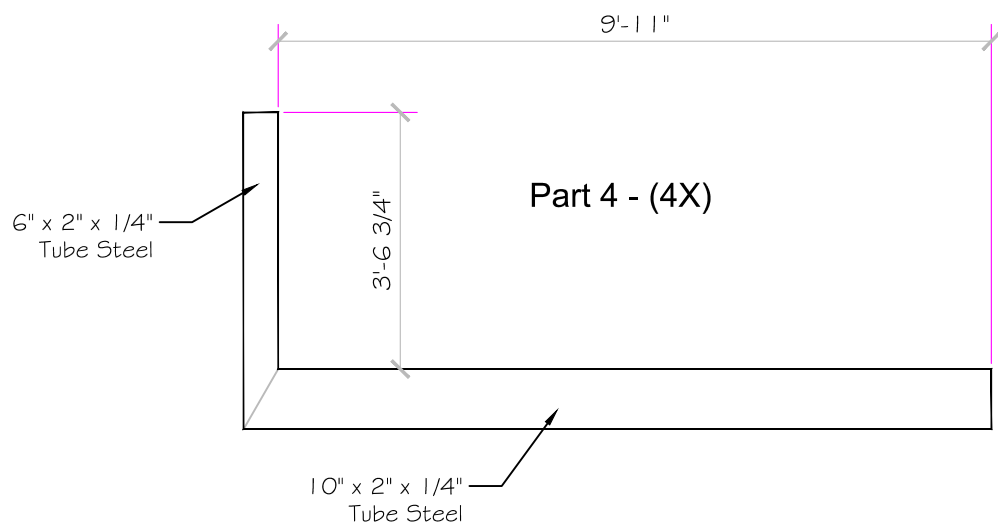
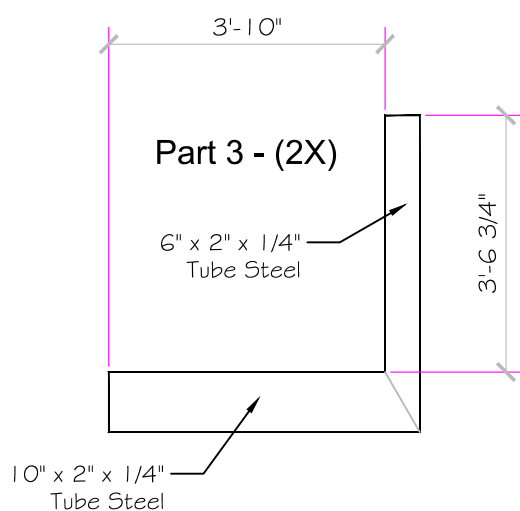
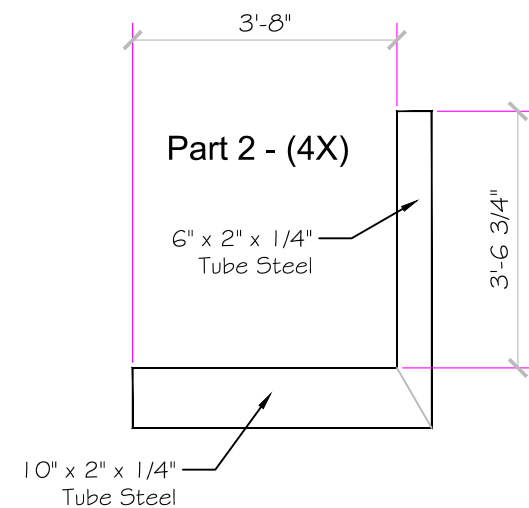
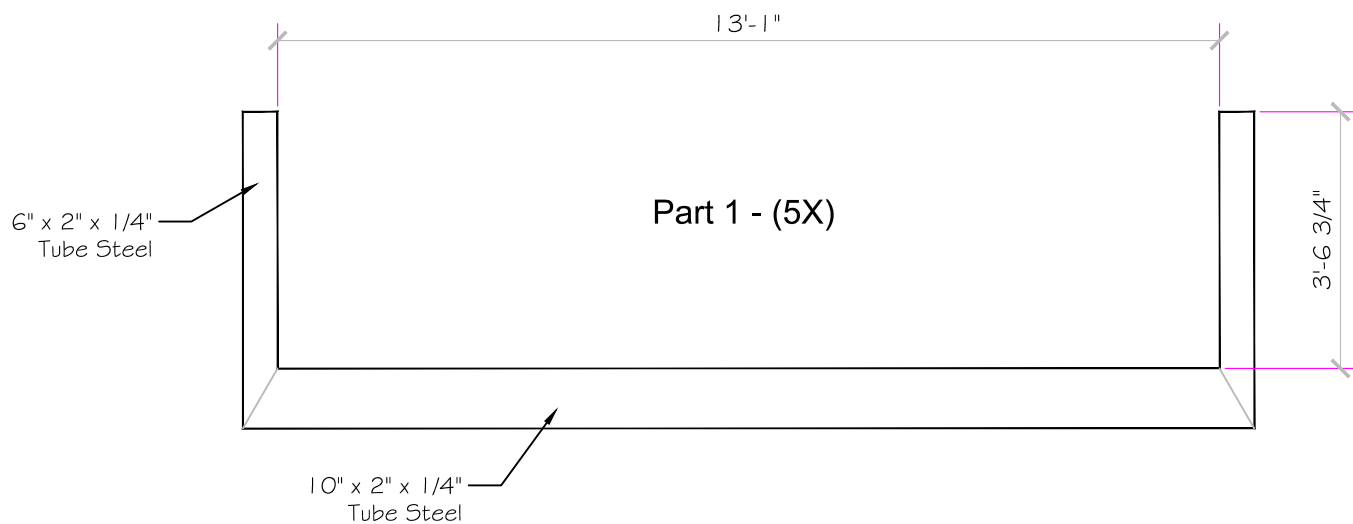


DWG TYPE
Steel Detail 5

DWG NAME
1415 PARK PLACE

DATE
6/6/2014

SHEET
PAGE 5 OF 7



6/11/2014 12:11:20 PM

These drawings, concepts, and details contained herein are the original proprietary designs of **NESPA ENTERPRISES INC.**, developed over many years of experience in the industry and as such are protected by the copyright laws of the United States Government. Reproduction of any of the above without written permission to do so by **NESPA ENTERPRISES INC.**, is illegal.

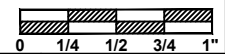
NESPA ENTERPRISES INC.
 2800 Richter Ave. Ste. C Oroville, CA 95966
 Office: (530) 534-9910 Fax: (530) 534-9915
 E-Mail: jim@tiledspas.com Web Site: www.tiledspas.com



If printing as a PDF:

Page Scaling:

SCALE
N/A



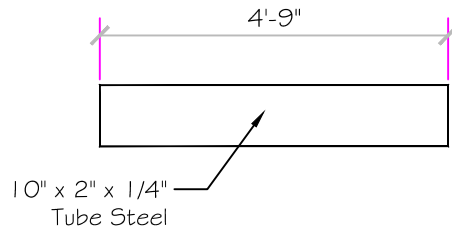
DWG TYPE
Steel Detail 6

DWG NAME
1415 PARK PLACE

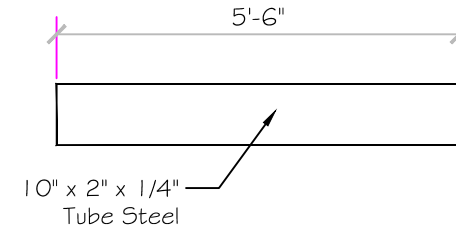
DATE
6/6/2014

SHEET
PAGE 6 OF 7

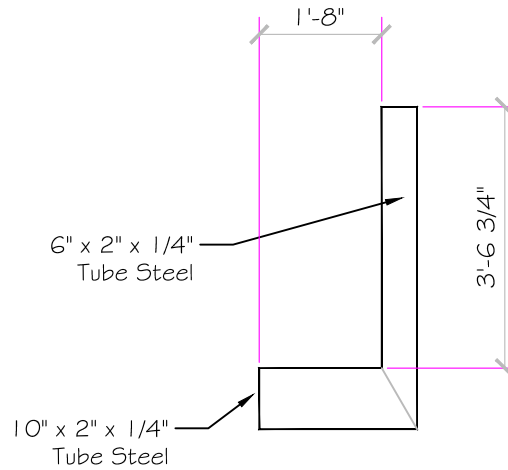
Part 5 - (12X)



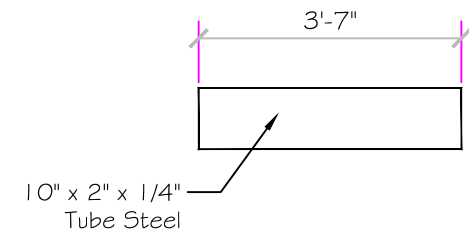
Part 6 - (4X)



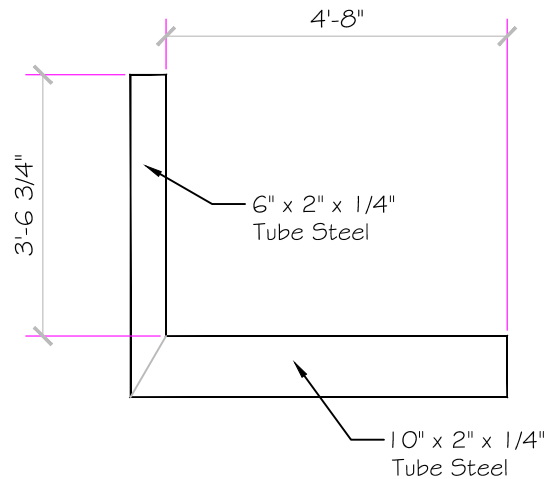
Part 7 - (2X)



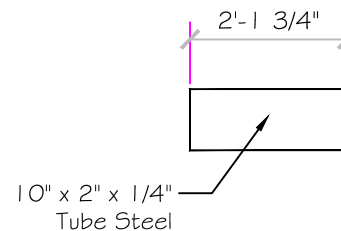
Part 8 - (3X)



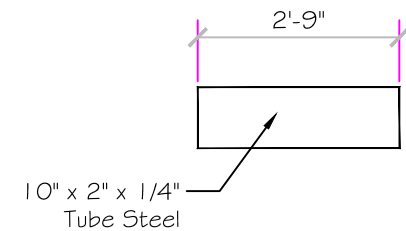
Part 9 - (2X)



Part 10 - (4X)



Part 11 - (2X)



6/11/2014 12:11:22 PM

